



2 Wilma Avenue Warrawong NSW

3 1 2

views | renovations | entertaining

Situated on a corner 550sqm parcel within a quiet cul-de-sac street, this fully renovated three-bedroom home offers stunning lake views within 2 minutes of every amenity. Boasting high ceilings and contemporary comforts with plenty of living space for entertaining and the growing family. Enjoy the abundance of natural light throughout the day; the nice morning sun on the front porch and picturesque sunset from the deck in the evening. With nothing further to do, simply move in and feel at home instantly.

what you will love...

[For full version visit the website](https://www.mcneice.com.au/8484758)

Type : House
Land Size : 550 sqm
View : <https://www.mcneice.com.au/8484758>

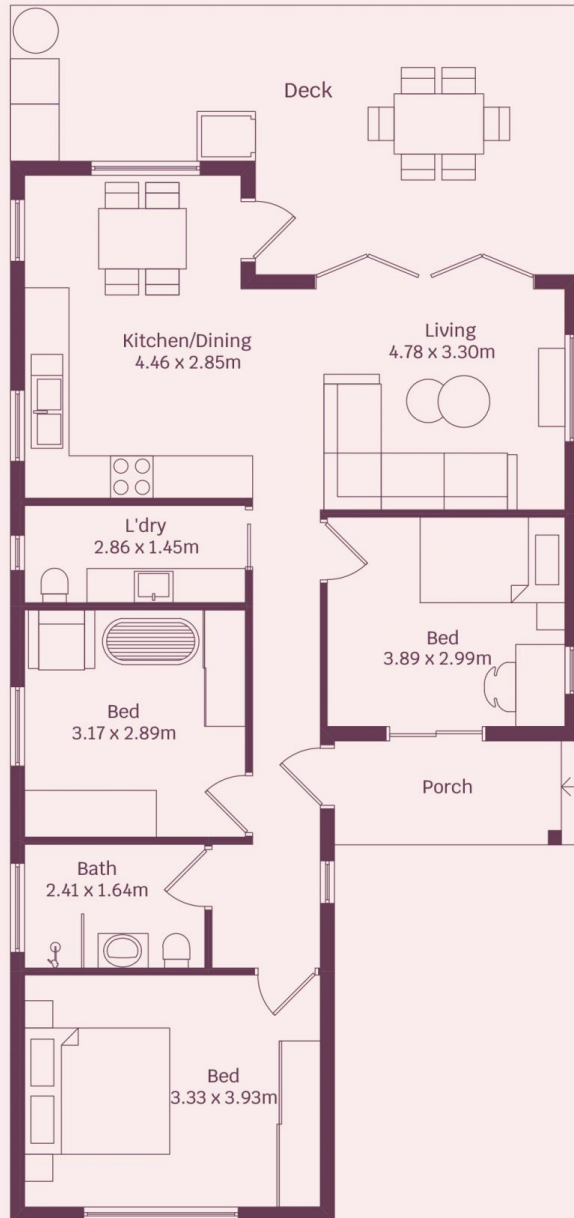


Daniel Mulholland
02 4284 8536

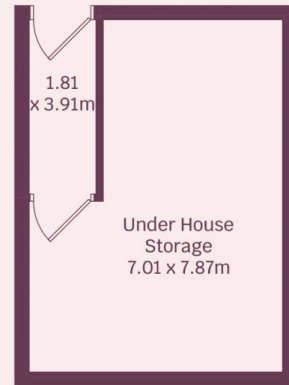


Emre Hasdiraz
02 4284 8536

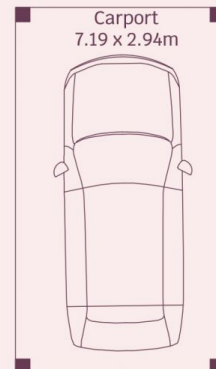
2 Wilma Avenue, Warrawong



Front



Front



HOUSE INTERNAL AREA 125m²

Plans shown are for presentation purposes and are not part of any legal document.

Dimensions are approximate