

1/10 Mitchell Road Woonona NSW

2 1 2

light | beach | low-maintenance

Located within a 10-minute stroll to the popular Woonona beach, this beautifully presented two-bedroom townhouse provides the perfect low-maintenance and coastal lifestyle.

Type : Townhouse

Price : \$ 765,000

View : <https://www.mcneice.com.au/8484757>

what you will love...

- > well-maintained townhouse set in a peaceful complex of just 4 units
- > bright and airy living room with timber floorboards and split system air conditioning
- > contemporary kitchen with dishwasher, breakfast bar and ample storage



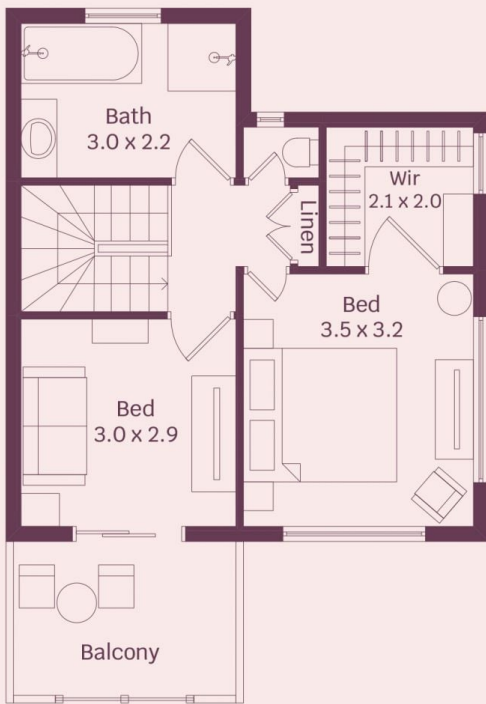
Adam Blackmore
02 4284 8536



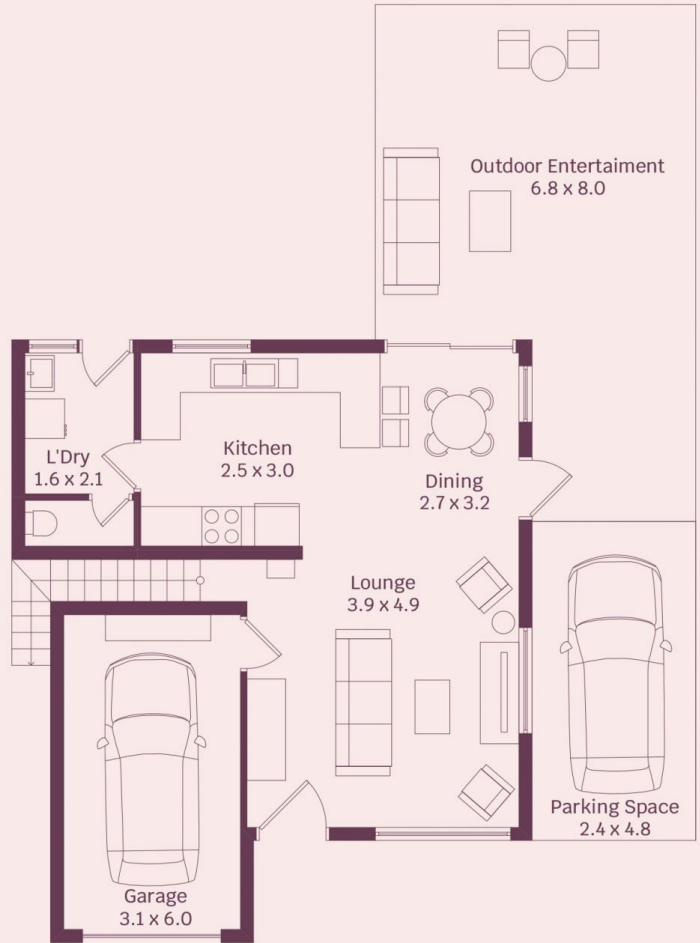
Matthew Stipcevic
02 4284 8536

[For full version visit the website](https://www.mcneice.com.au)

1/10 Mitchell Road, Woonona



First Floor



Ground Floor

Aspect North Facing

HOUSE INTERNAL AREA 91.07m²

Plans shown are for presentation purposes and are not part of any legal document.

Dimensions are approximate.

molenaar × mcneice