

15 Thomas Street Corrimal NSW

4 1 1

character | space | location

Behind a charming single-story façade lies this unique family abode with four bedrooms, multiple living areas and outdoor entertaining. Built with traditionally large rooms and high ceilings to enhance the feeling of space complete with a great size yard. Blending distinctive charm and modern accents with family functionality and entertaining in mind all while located in a friendly community close to parks, fantastic local schools, and Corrimal Shopping Centre.

what you will love...

> four bedrooms of accommodation with built-in robes and

[For full version visit the website](https://www.mcneice.com.au)

Type : House
Price : \$ 1,350,000
Land Size : 626 sqm
View : <https://www.mcneice.com.au/8484731>

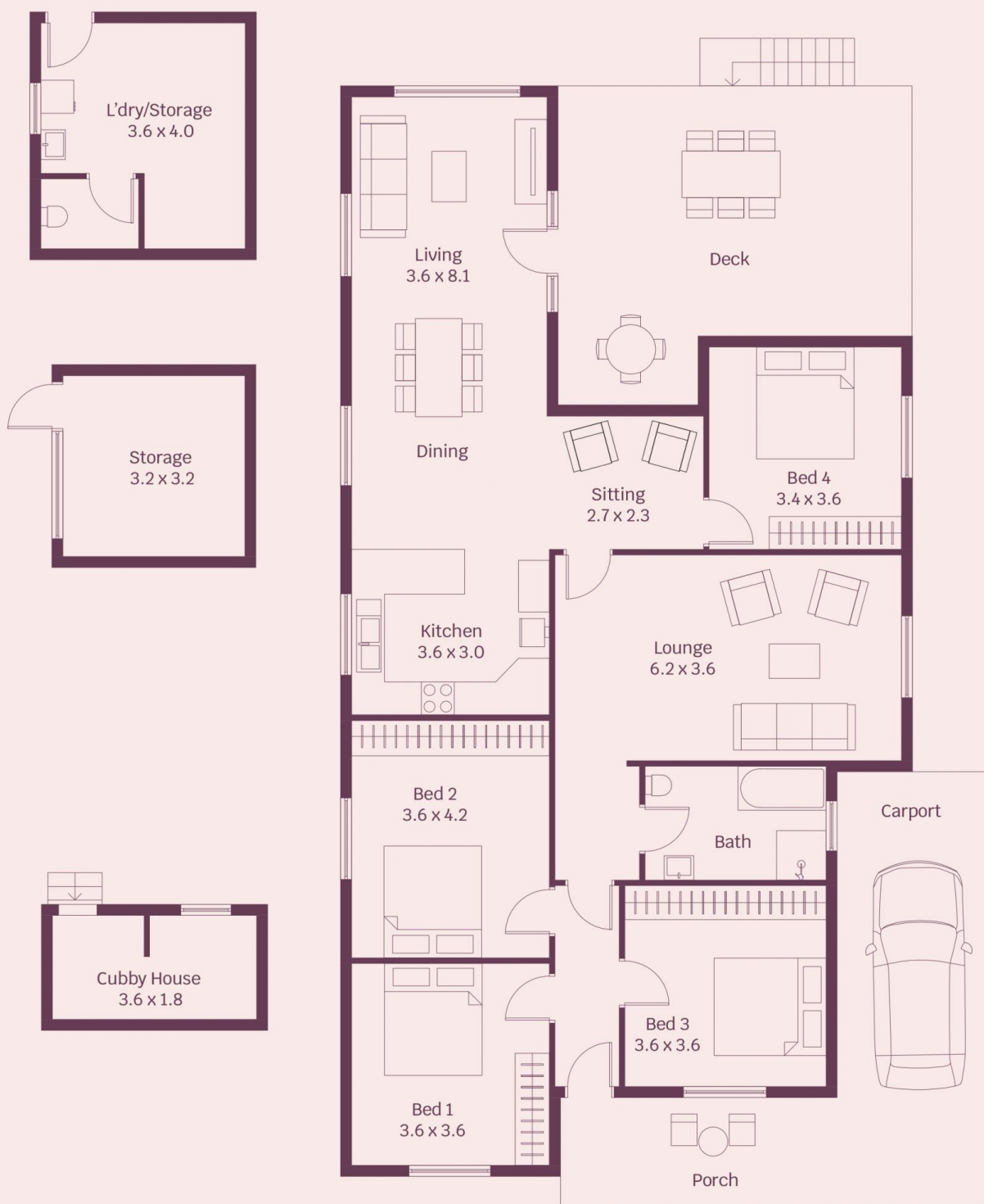


David Hyslop
02 4284 8536



Daniel Mulholland
02 4284 8536

15 Thomas Steet, Corrimal



HOUSE INTERNAL AREA 170m²

Plans shown are for presentation purposes and are not part of any legal document. Dimensions are approximate.

molenaar × mcneice