



11/13 Popes Road Woonona NSW

3 2 2

immaculate | modern | convenience

what you will love...

With its spacious and bright interiors, this cleverly designed townhouse provides modern finishes and single level living. Set privately within an impeccably maintained complex, you will love the low maintenance lifestyle and the convenience of being just a short stroll from Woonona Village.

- > spacious open-plan living with brand new engineered timber floorboards
- > kitchen equipped with stone bench tops and quality appliances

[For full version visit the website](https://www.mcneice.com.au/8484711)

**Type** : Townhouse  
**Price** : \$ 1,035,000  
**View** : <https://www.mcneice.com.au/8484711>

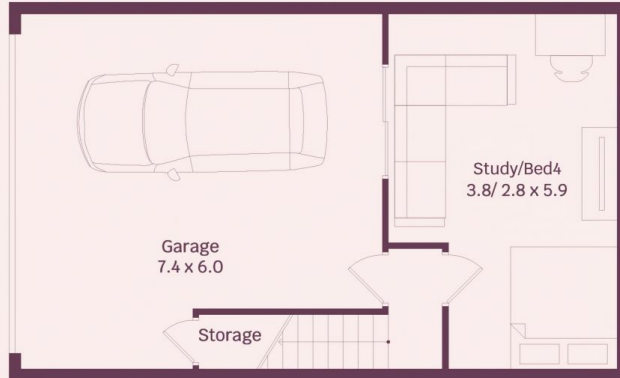


**Adam Blackmore**  
02 4284 8536

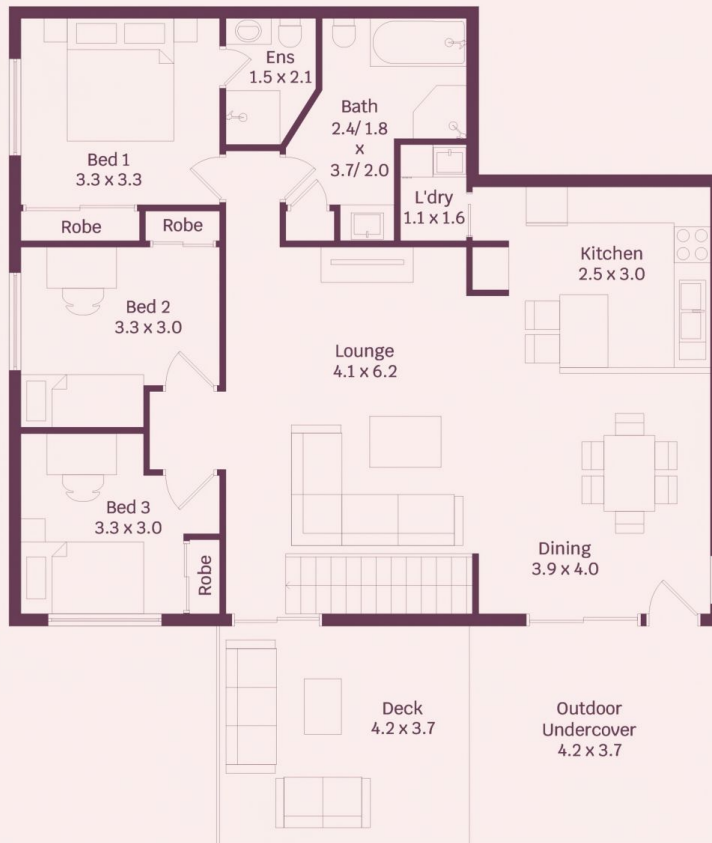


**Matthew Stipcevic**  
02 4284 8536

11/13 Popes Road, Woonona



Lower Level



Ground Floor



HOUSE INTERNAL AREA 174m<sup>2</sup>

Plans shown are for presentation purposes and are not part of any legal document.

Dimensions are approximate