

504/31 Atchison Street Wollongong NSW

2 2 1

what you will love...
chic | modern | lifestyle

Situated in the contemporary Onyx complex in Wollongong, this skyline apartment gives high-end modern finishes, and walk-to-everything convenience. With a north-western aspect welcoming an abundance of natural light this chic apartment is ideally suited to first-home buyers, investors, or downsizers.

- + two bedrooms of accommodation with built-in wardrobes, master with ensuite
- + gas kitchen with Smeg appliances and 40mm stone breakfast bench

Type : Apartment
View : <https://www.mcneice.com.au/8484705>



Daniel Mulholland
02 4284 8536

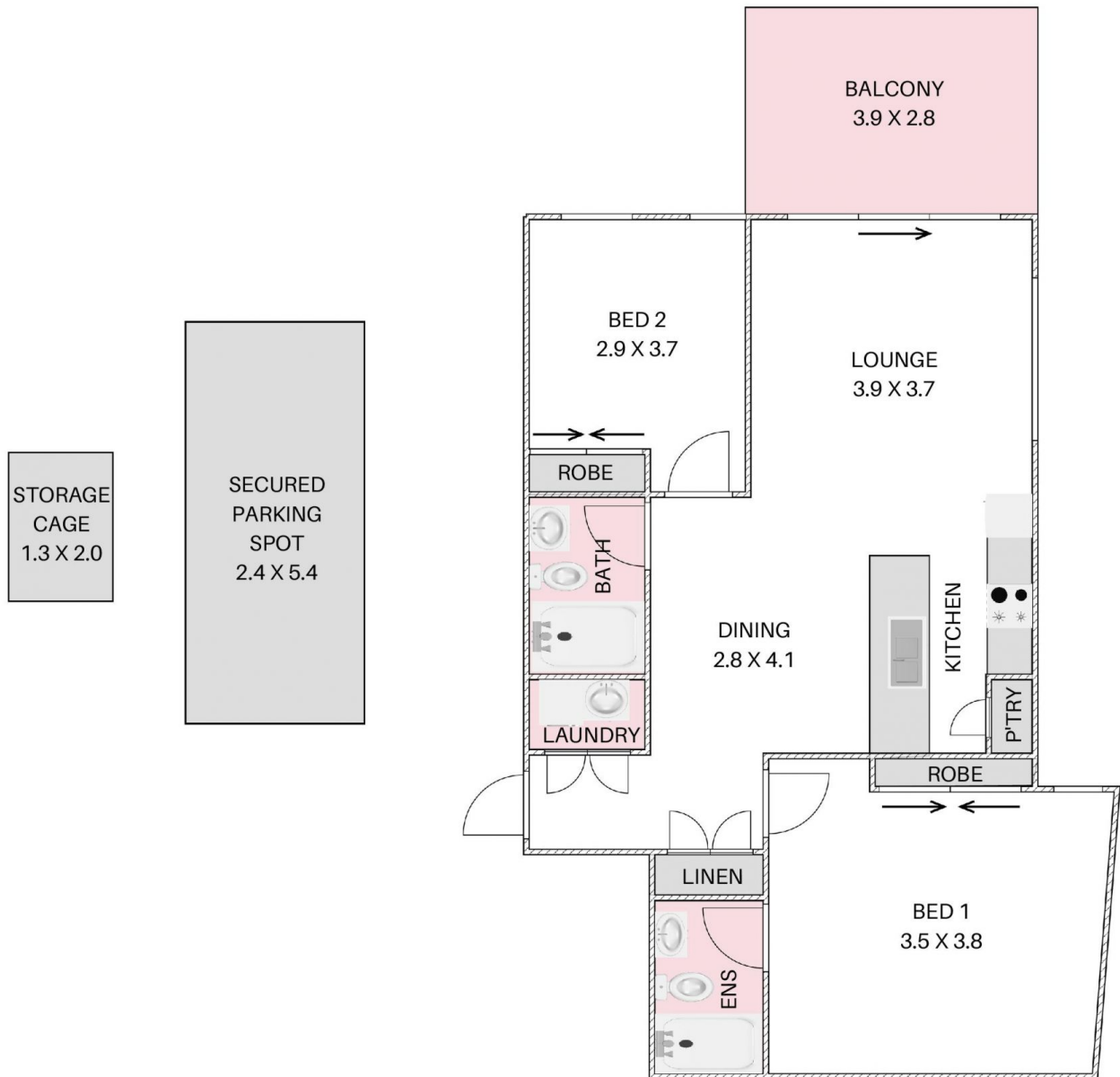


Danny Peterson
02 4284 8536

[For full version visit the website](#)

504/31 ATCHISON STREET, WOLLONGONG

+ molenaar
mcneice



HOUSE TOTAL AREA 105m²

Plans shown are for presentation purposes and are not part of any legal document. Dimensions are approximate.