

6/40 Cherry Street Woonona NSW

what you will love?
light | location | style

Tucked away in a quiet boutique block in Edgewood Estate, this modern townhouse has been tastefully updated and boasts stylish interiors only a short stroll from the heart of Woonona's shopping precinct. Set over three levels to maximise internal floorspace and soaking in the northern sunlight all year around; space, light and lifestyle convenience are only a few of the many things you will love about this home.

+ open plan living and dining areas with reverse cycle airconditioning

[For full version visit the website](#)

2 1 2

Type : Townhouse

Price : \$ 760,000

View : <https://www.mcneice.com.au/8484681>



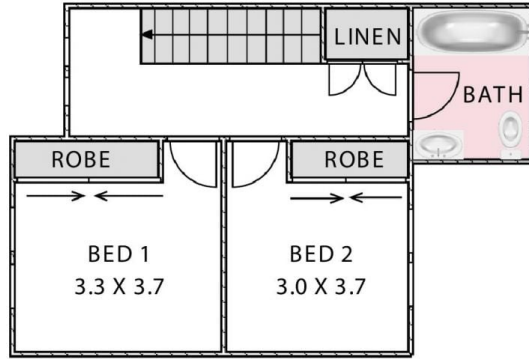
Daniel Mulholland
02 4284 8536



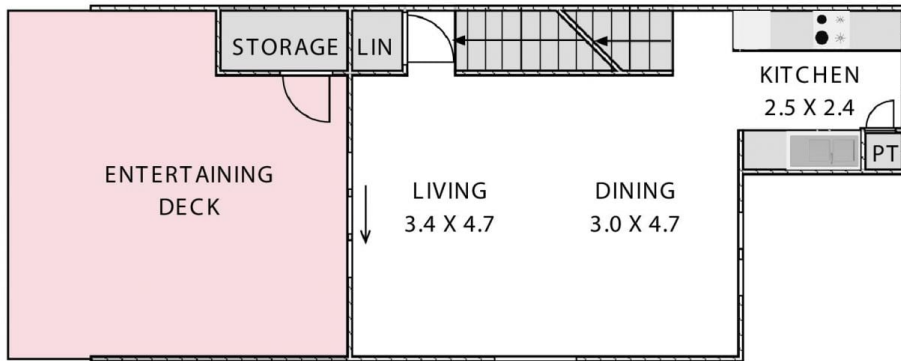
Adam Blackmore
02 4284 8536

6/40 CHERRY STREET, WOONONA

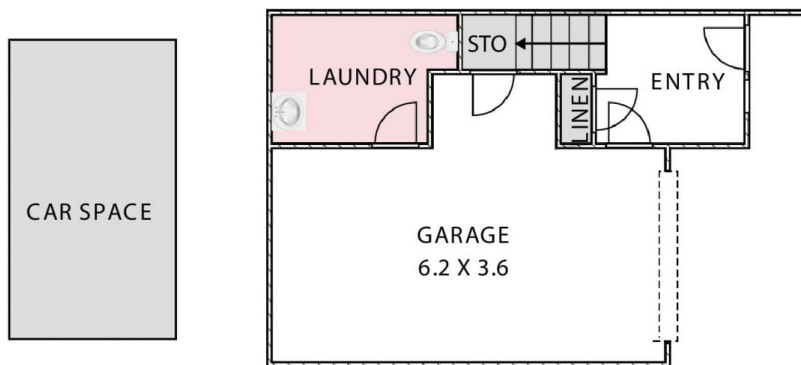
+ molenaar
mcneice



SECOND FLOOR



FIRST FLOOR



GROUND FLOOR

HOUSE TOTAL AREA 168m²

Plans shown are for presentation purposes and are not part of any legal document. Dimensions are approximate.

