



105 Northcliffe Drive Lake Heights NSW

3 1 1

what you will love...
views | location | potential

With water front panoramic views bordering the reserve and banks of Lake Illawarra, this charming character cottage offers a fantastic opportunity to extend or renovate to create your perfect home in a rare location.

- + offering a much loved family home that has been tightly-held for decades
- + three bedrooms of accommodation, modernised bathroom with floor-to-ceiling tiles
- + updated kitchen with ample bench and cupboard space
- + generous living area with fire place and expansive dining

[For full version visit the website](#)

Type : House
Land Size : 608 sqm
View : <https://www.mcneice.com.au/8484656>



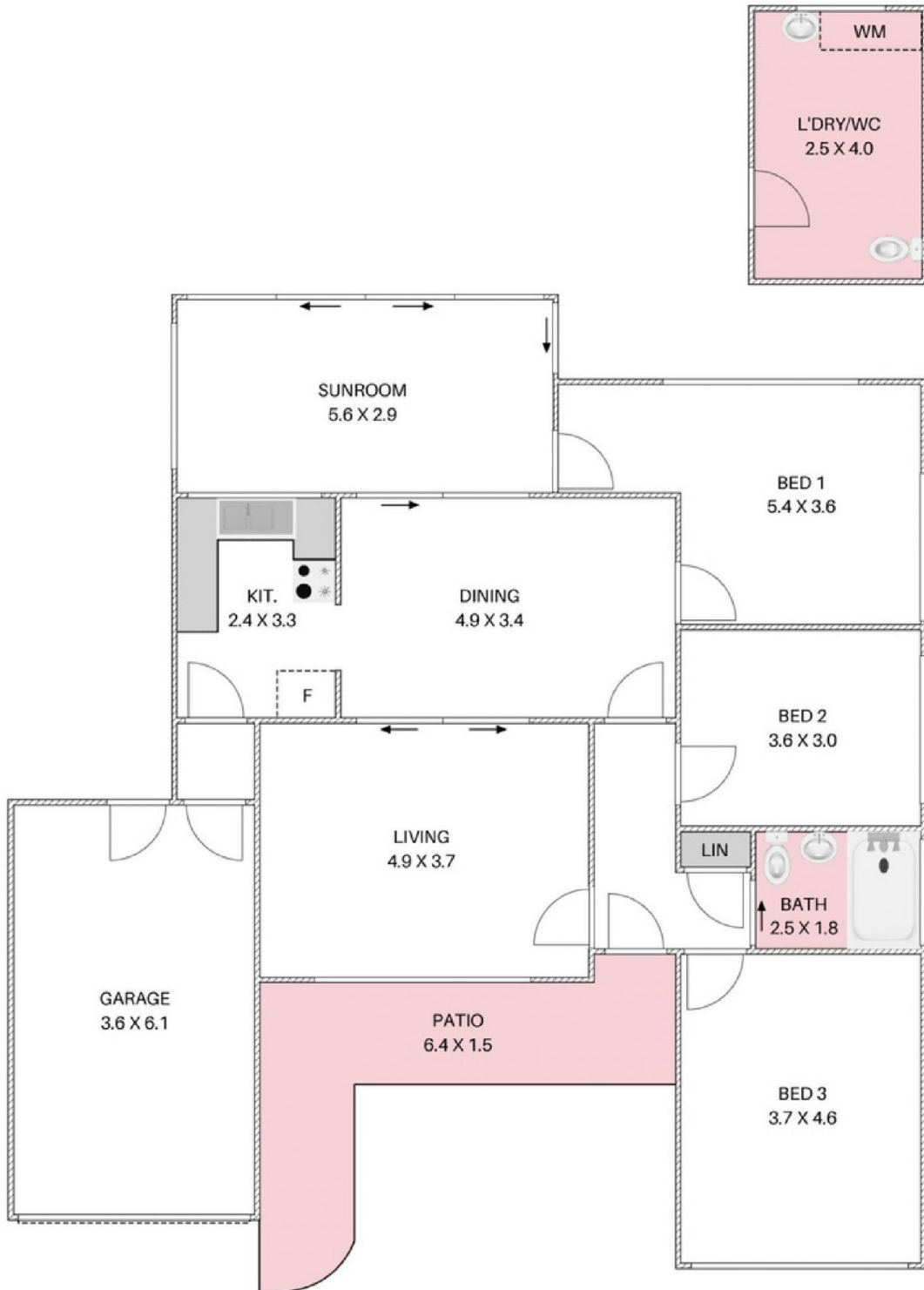
Daniel Mulholland
02 4284 8536



Danny Peterson
02 4284 8536

105 NORTHCLIFFE DRIVE, LAKE HEIGHTS

+ molenaar
mcneice



HOUSE INTERNAL AREA: 148m²

HOUSE TOTAL AREA: 162m²

Plans shown are for presentation purposes and
are not part of any legal document.
Dimensions are approximate.

