



5 Lucinda Street Gwynneville NSW

4 🏠 3 🚗 2 🚗

what you will love?
leafy | family | entertainment

Proudly positioned in a much sought-after leafy Gwynneville locale, this fabulous contemporary home offers premium family living and effortless entertainment. Impressively proportioned with generous living spaces, a study/media room, plus a fantastic entertaining deck and pool. Enjoying peaceful proximity to both Gwynneville and Keiraville amenities, this is an outstanding lifestyle residence with all the hallmarks of a 'forever' home.

+ blackbutt hardwood flooring, air conditioning, and plantation shutters throughout

[For full version visit the website](https://www.mcneice.com.au)

Type : House
Land Size : 519 sqm
View : <https://www.mcneice.com.au/8484643>

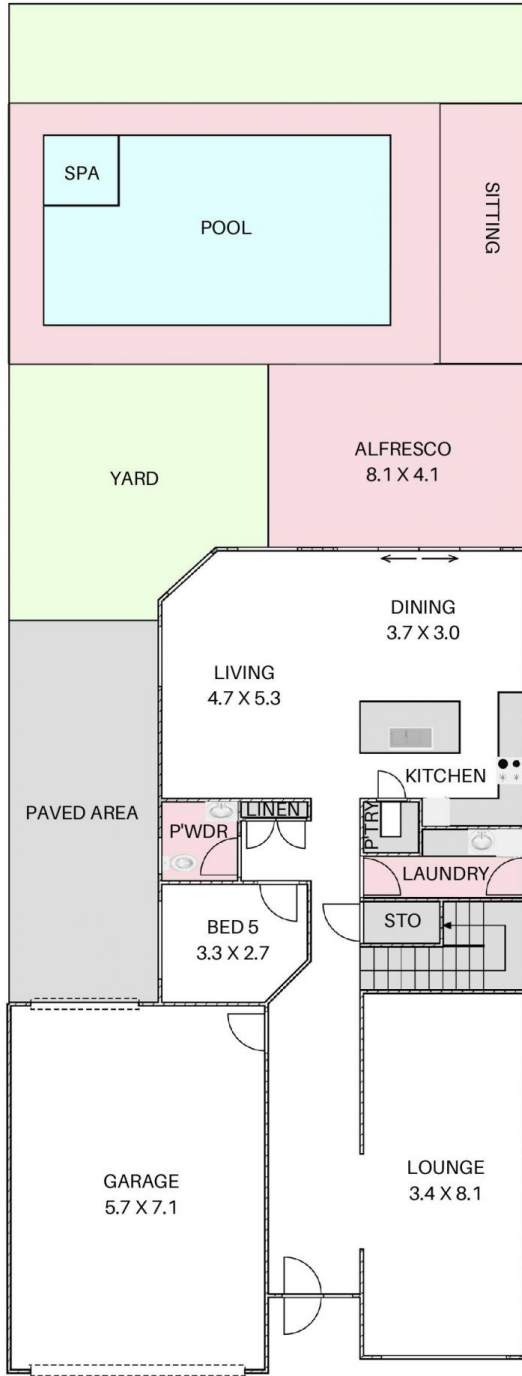


David Hyslop
02 4284 8536

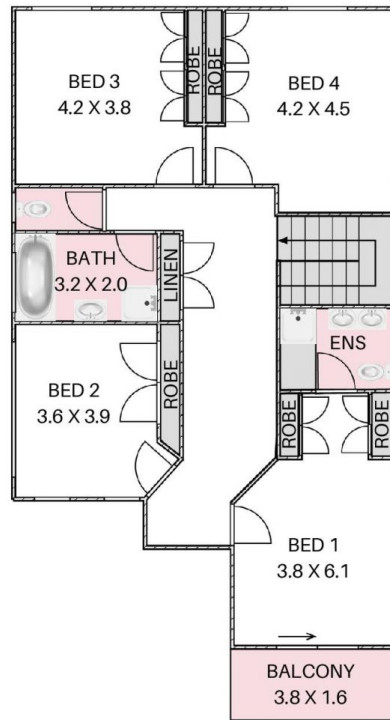


Danny Peterson
02 4284 8536

5 LUCINDA STREET, GWYNNEVILLE



GROUND FLOOR



FIRST FLOOR

HOUSE TOTAL AREA 310m²

Plans shown are for presentation purposes and are not part of any legal document. Dimensions are approximate.

