



**220 Gladstone Avenue Mount Saint Thomas NSW**

3 1 1

what you will love?  
charming | potential | family

Conveniently positioned close to Wollongong CBD, on an impressive 696sqm block, this circa 1940 residence boasts charming period features with a modern feel throughout. Perfect for a young family, giving them the opportunity for a future extension or enjoy the home immediately.

- + charming original three bedroom double brick home, elevated outlook
- + modern retro-inspired kitchen with gas cooking and quality appliances
- + split system air conditioning, ceiling fans throughout the

[For full version visit the website](https://www.mcneice.com.au)

**Type** : House  
**Price** : \$ 780,000  
**Land Size** : 696 sqm  
**View** : <https://www.mcneice.com.au/8484594>

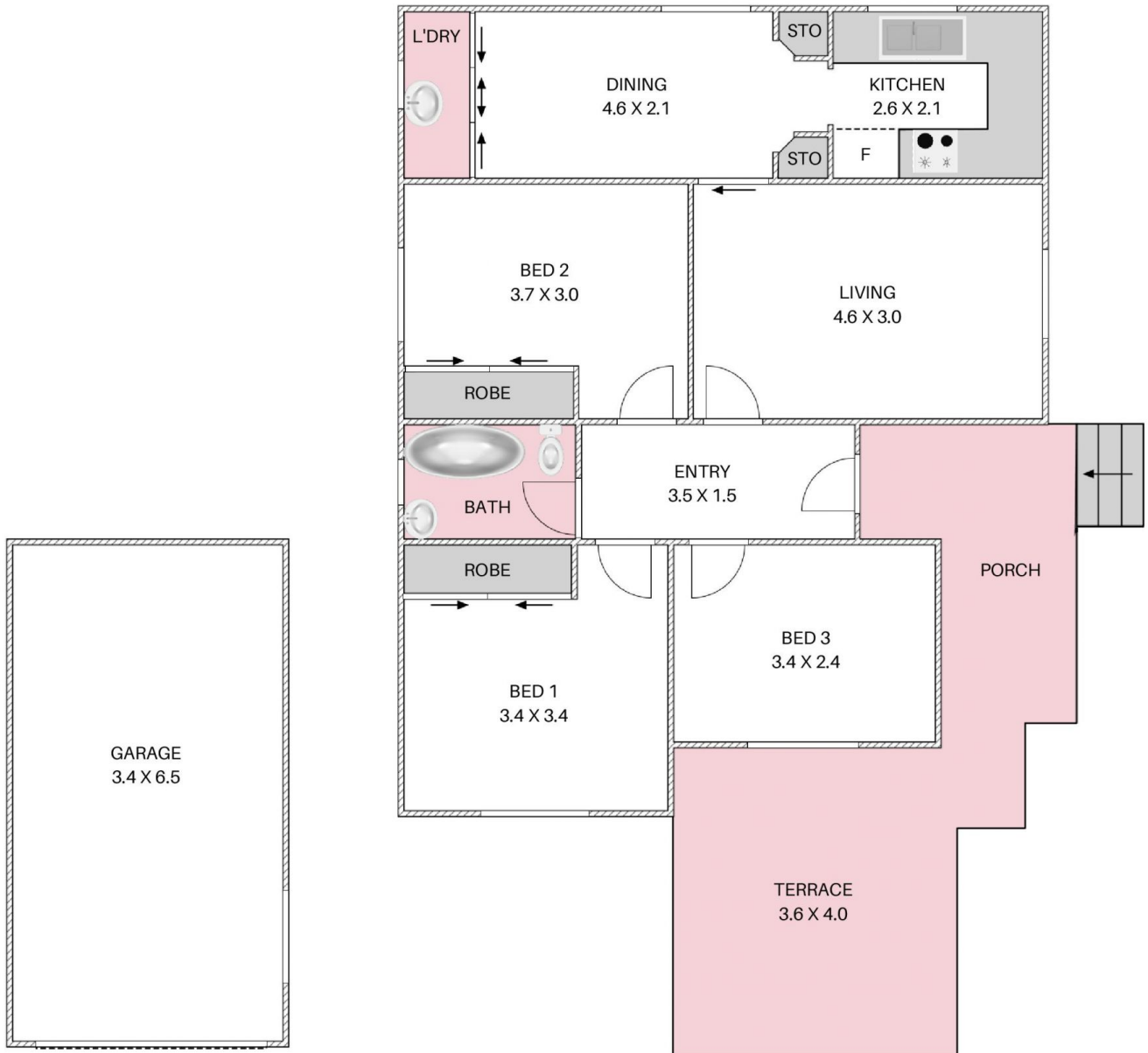


**Matthew Stipcevic**  
02 4284 8536



**Danny Peterson**  
02 4284 8536

220 GLADSTONE AVENUE, MOUNT SAINT THOMAS



HOUSE TOTAL AREA 140m<sup>2</sup>

Plans shown are for presentation purposes and are not part of any legal document. Dimensions are approximate.

