



10 Colemans Lane Bulli NSW

4 2 2

location | single-level | modern

Positioned on a quiet, family-friendly street where children play safely and neighbours connect, this beautifully presented single-level home offers the perfect blend of modern comfort and coastal convenience. With a range of cafes, shops, schools and amazing beaches on your doorstep, you will love that you can leave the car at home and easily walk to everything.

what you will love...

> modern open plan kitchen with quality appliances and large island bench

[For full version visit the website](https://www.mcneice.com.au/8484580)

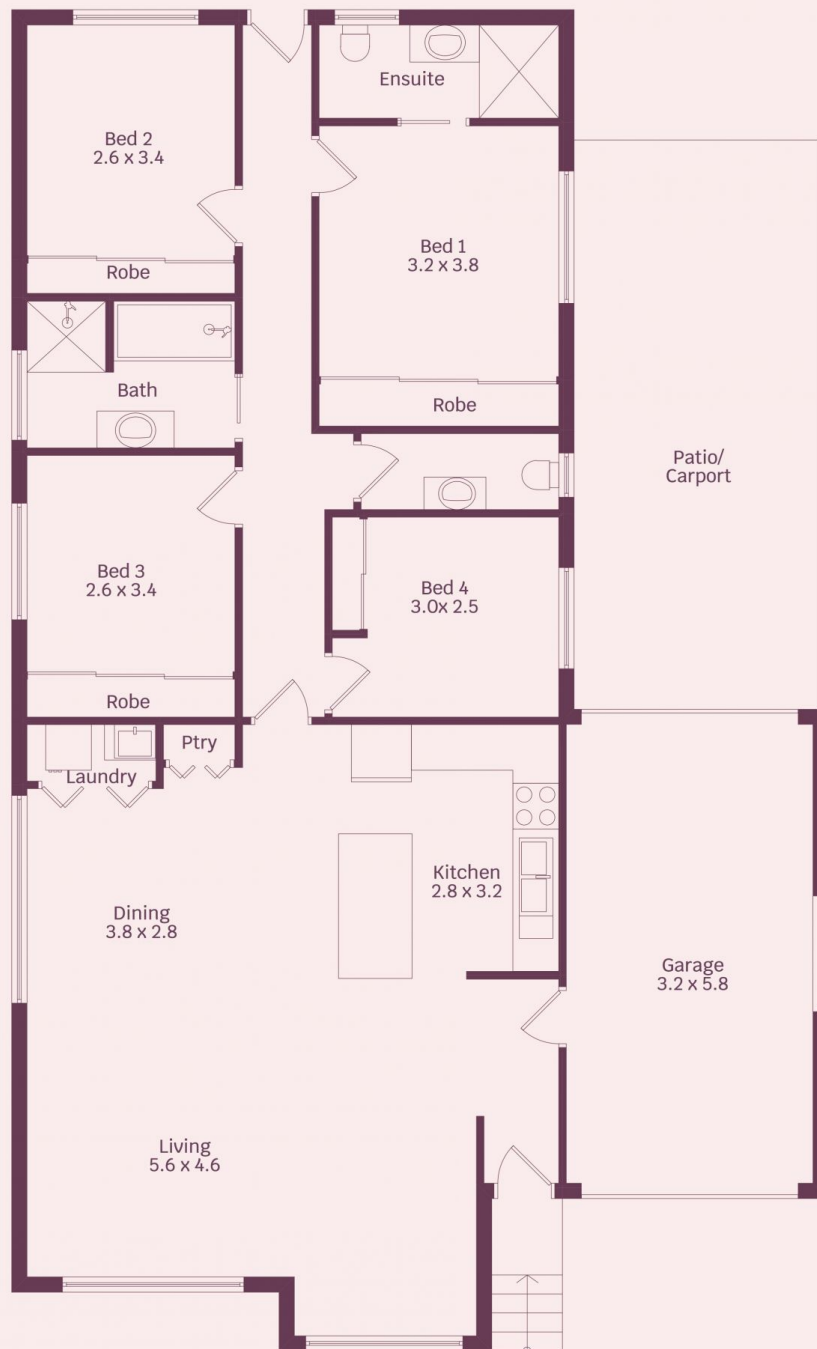
Type : House
Price : \$ 1,860,000
Land Size : 452 sqm
View : <https://www.mcneice.com.au/8484580>



Adam Blackmore
02 4284 8536



Matthew Stipcevic
02 4284 8536



HOUSE INTERNAL AREA 100m²

HOUSE OVERALL AREA 131m²

Plans shown are for presentation purposes and are not part of any legal document.

Dimensions are approximate