



1/20 Seddon Street Figtree NSW

2 1 1

what you will love...
investment | low-maintenance | central

This private, low maintenance two-bedroom unit is positioned within the small 6 unit complex, it overlooks the Figtree Oval providing greenery and a sense of space to relax and enjoy. It is immaculate with bamboo flooring throughout and renovated bathroom and kitchen it is move in without the fuss. Whether it's an investment or your first home it is comfortable and conveniently located within close proximity to M1, Figtree Grove, local cafes/restaurants, and Wollongong CBD.

+ fantastic investment with an estimated rental return of

[For full version visit the website](#)

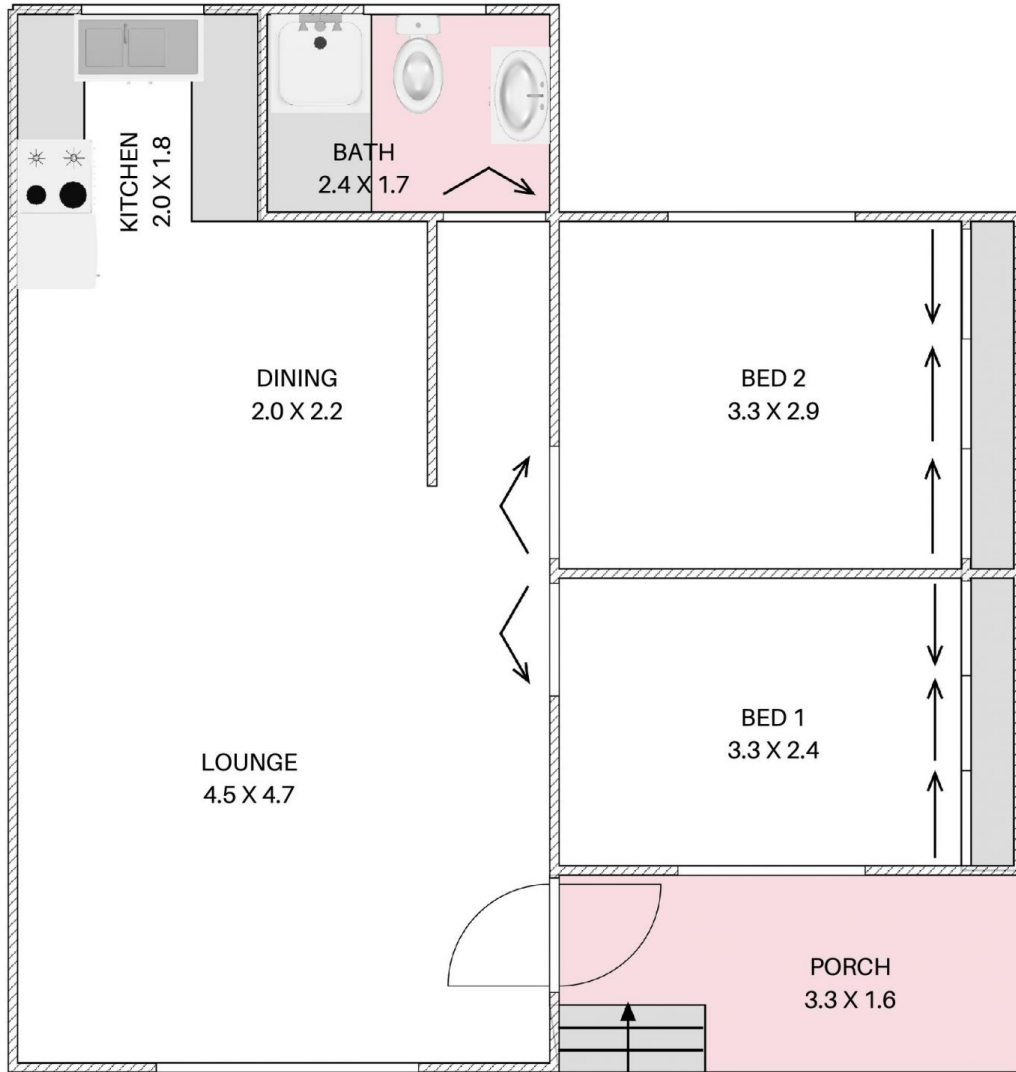
Type : Unit
Price : \$ 530,000
View : <https://www.mcneice.com.au/8484559>



Danny Peterson
02 4284 8536

1/20 SEDDON STREET, FIGTREE

+ molenaar
mcneice



HOUSE TOTAL AREA 63m²

Plans shown are for presentation purposes and are not part of any legal document. Dimensions are approximate.

