



26 Lyndon Street Corrimal NSW

5 🛏 3 🚗 2 🚗

what you will love...
functional | surrounds | family

Nestled in a quiet cul-de-sac and surrounded by nature, this beautifully presented home has undergone a recent transformation to create the perfect family sanctuary. Enjoying a flexible layout with enough space for the changing requirements of a growing family. Flooded with natural light and taking in picturesque aspect from all angles, this home is the complete package.

- + spacious free flowing layout with seamless indoor outdoor connection
- + tastefully presented interiors with ample options for

[For full version visit the website](https://www.mcneice.com.au)

Type : House
Land Size : 797 sqm
View : <https://www.mcneice.com.au/8484550>



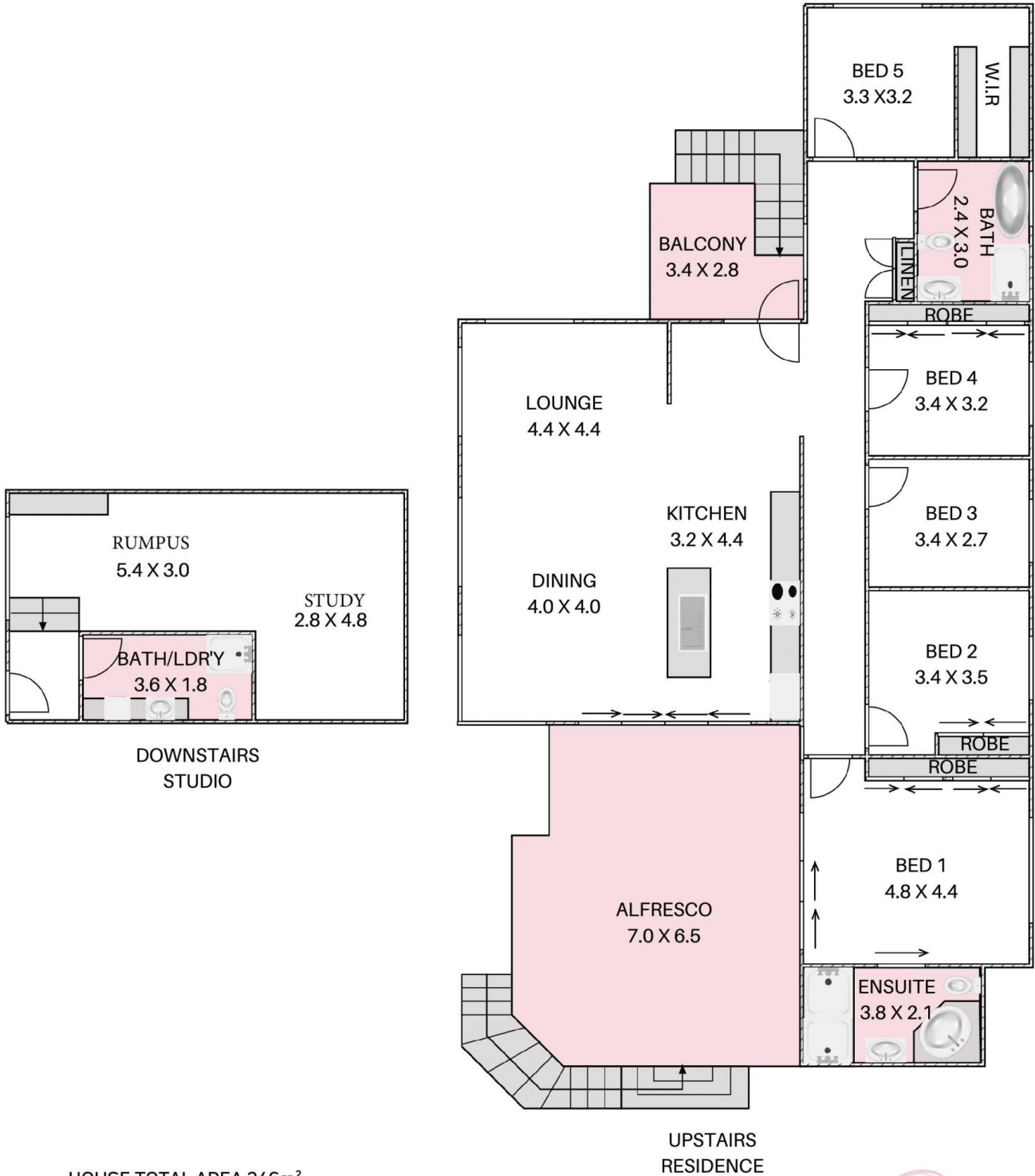
Troy McNeice
02 4284 8536



David Hyslop
02 4284 8536

26 LYNDON STREET, CORRIMAL

+ molenaar
mcneice



HOUSE TOTAL AREA 246m²

Plans shown are for presentation purposes and are not part of any legal document. Dimensions are approximate.

