



3/20 Seddon Street Figtree NSW

2 1 1

what you will love...
investment | low-maintenance | central

This private and low maintenance two-bedroom unit is positioned within the small 6 unit complex, it overlooks the Figtree Oval providing greenery and a sense of space to relax and enjoy. With a blank canvas of possibilities this fabulous renovator, investment, or first home is comfortable and conveniently located within close proximity to M1, Figtree Grove, local cafes/restaurants, and Wollongong CBD.

+ a fantastic investment with an estimated rental return of \$380- \$400 pw

[For full version visit the website](#)

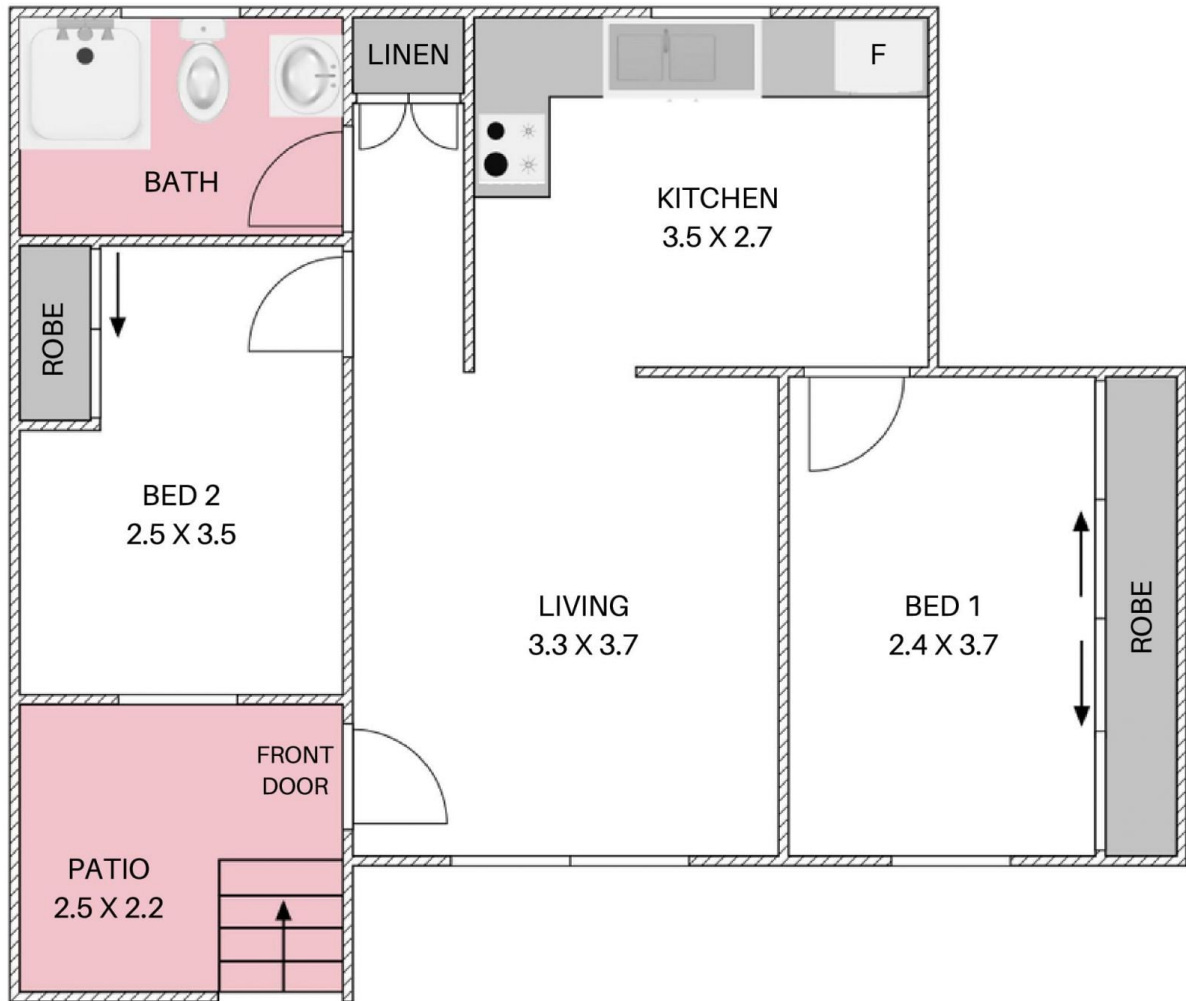
Type : Unit
Price : \$ 505,000
View : <https://www.mcneice.com.au/8484507>



Danny Peterson
02 4284 8536

3/20 SEDDON STREET, FIGTREE

+ molenaar
mcneice



HOUSE TOTAL AREA 53m²

Plans shown are for presentation purposes and are not part of any legal document. Dimensions are approximate.

