



1a Park Road Bulli NSW

3 3 2

what you will love...
location | lifestyle | beach

This east facing property is just a stroll across the park to Sandon point and the beach. With easy access to both primary and secondary schools and Bulli pass this stunning home is situated directly on the reserve and overlooks the ocean. The residence flows beautifully and is light-filled with a contemporary design, raked ceilings and multiple living areas. This property is ideally suited for those who desire a low maintenance lifestyle and simply want to enjoy everything Bulli has to offer.

+ split level home located in east Bulli capturing

[For full version visit the website](https://www.mcneice.com.au)

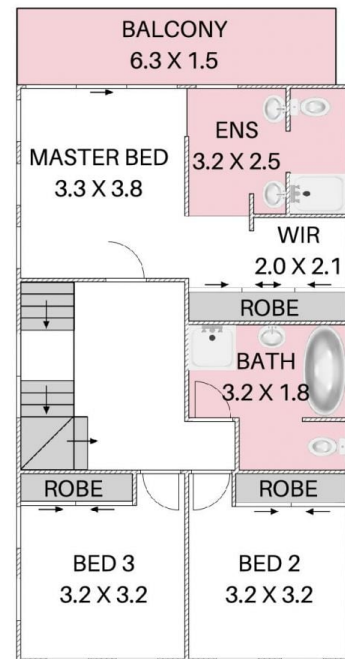
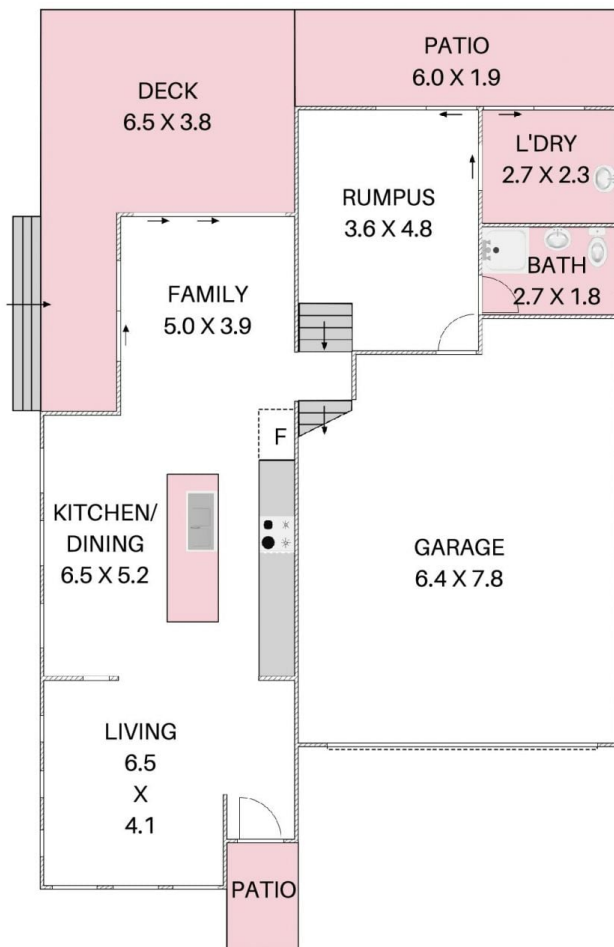
Type : House
Price : \$ 2,255,000
Land Size : 469 sqm
View : <https://www.mcneice.com.au/8484485>



Danny Peterson
02 4284 8536

1A PARK ROAD, BULLI

+ molenaar
mcneice



HOUSE TOTAL AREA 260m²

Plans shown are for presentation purposes and are not part of any legal document. Dimensions are approximate.

