



7/72 Park Road Bulli NSW

2 1 1

what you will love?  
affordable | opportunity | location

Situated in an ever-popular complex within strolling distance to Bulli beach. With north to rear orientation and a light-filled open plan living space. This is the perfect affordable entry into east Bulli. Only minutes to major shopping and cafes.

- + open living and dining area opening onto the north-facing balcony
- + neat and tidy kitchen with ample bench and cupboard space
- + two good-sized bedrooms complete with built-in

[For full version visit the website](#)

**Type** : Apartment  
**Price** : \$ 605,000  
**View** : <https://www.mcneice.com.au/8484483>



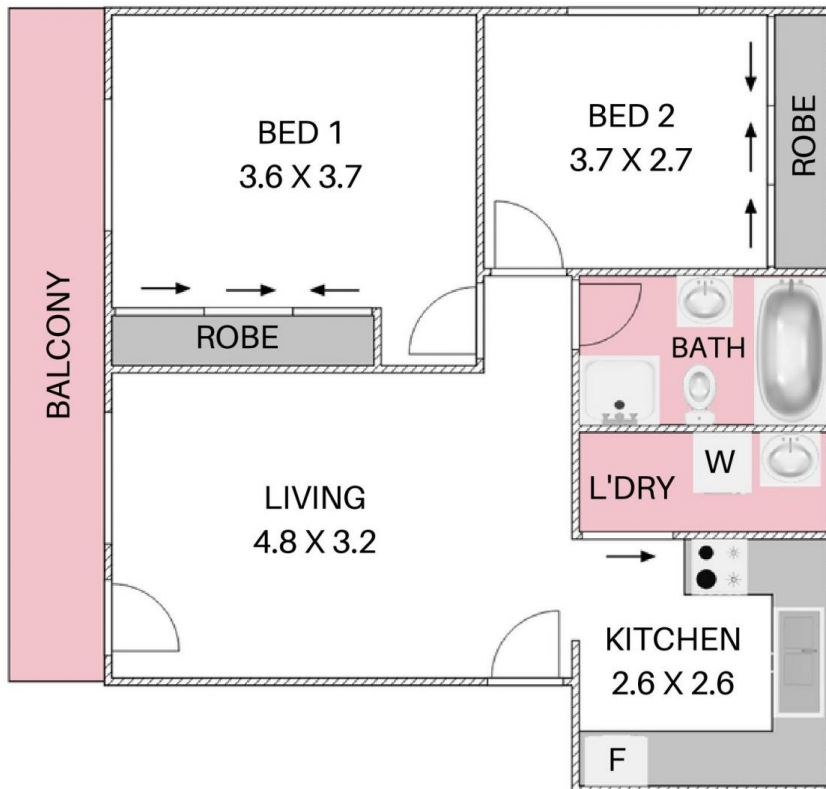
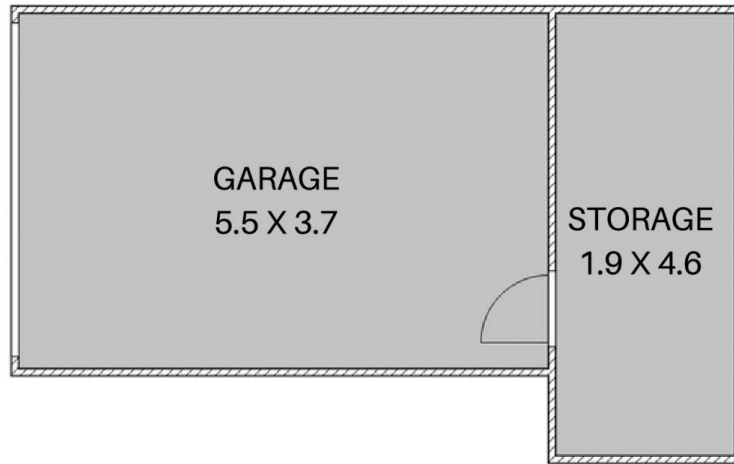
**David Hyslop**  
02 4284 8536



**Daniel Mulholland**  
02 4284 8536

7/72 PARK ROAD, BULLI

+ molenaar  
mcneice



HOUSE TOTAL AREA 56m<sup>2</sup>

Plans shown are for presentation purposes and are not part of any legal document. Dimensions are approximate.

