

132 Buttenshaw Drive Austinmer NSW

3 2 2

privacy | tranquil | oasis

Surrounded by natural bushland with incredible scenery and just moments from famous beaches, this cedar home has been architecturally designed to capture the beauty of its surroundings. Landscaped gardens and lush rainforest views flow seamlessly with the open plan residence to create a space that is connected to nature in every part of the home. Set on approximately 1,025m² of privacy, boasting a lifestyle like no other, this home is stylishly finished throughout.

what you will love...??

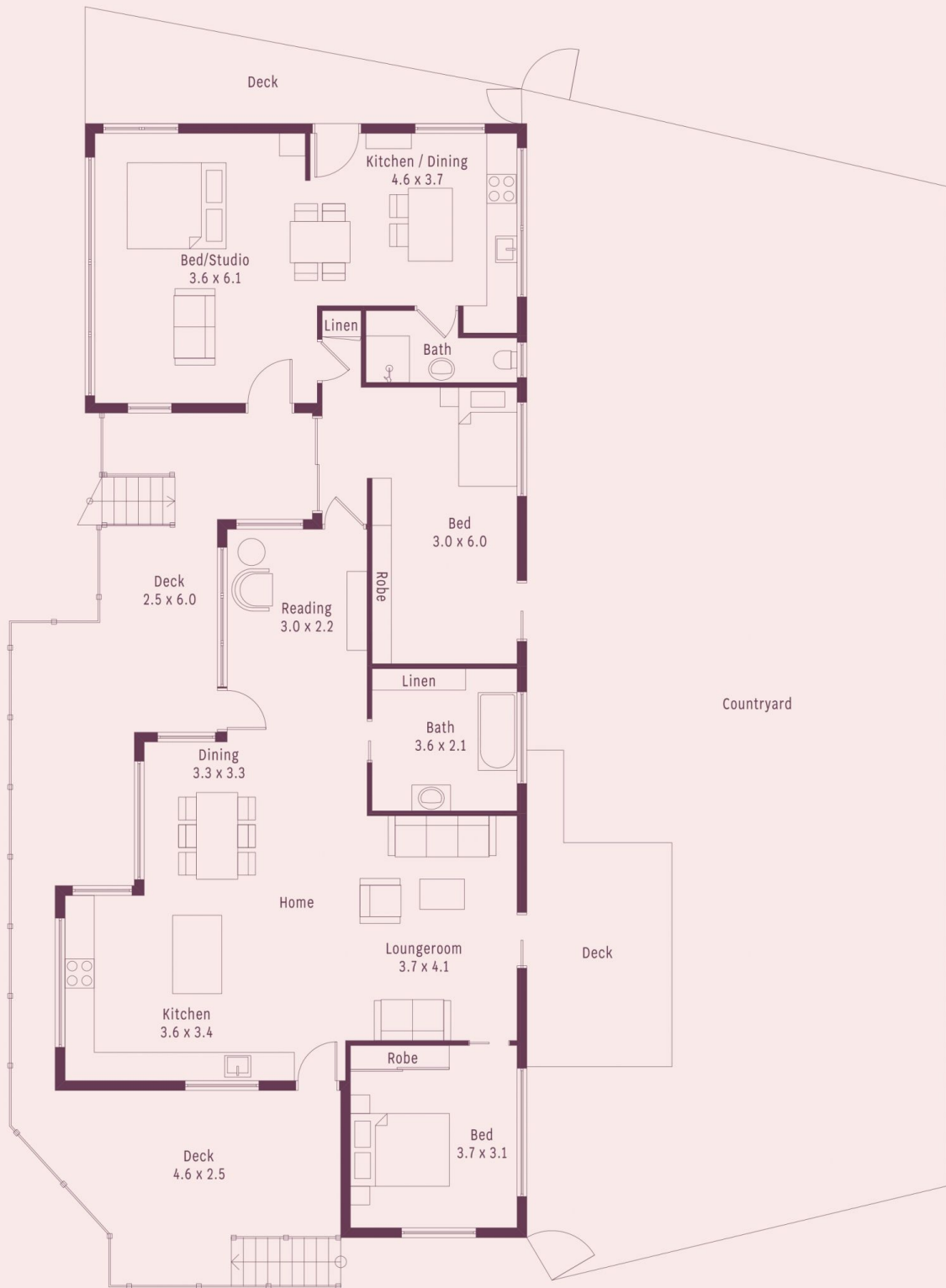
[For full version visit the website](https://www.mcneice.com.au)

Type : House
Price : \$ 2,075,000
Land Size : 1025 sqm
View : <https://www.mcneice.com.au/8484442>



David Hyslop
02 4284 8536

132 Buttenshaw Drive, Austinmer



HOUSE INTERNAL AREA 178m²

Plans shown are for presentation purposes and are not part of any legal document. Dimensions are approximate.

molenaar × mcneice