



9 Caroline Street Corrimal NSW

2 2 2

what you will love...
size | potential | location

Situated on a flat and expansive 768sqm parcel with a 15.4m frontage, this lovely single level cottage is a home full of warmth and comfort. Filled with possibilities to allow you to add your own personal touch in a thriving neighbourhood only moments from an array of lifestyle amenities including cafes, schools, parks and transport.

- + two generous bedroom of accommodation with wardrobes
- + multiple indoor and outdoor living or entertaining options
- + boasting an expansive sun-drenched yard with garden

[For full version visit the website](#)

Type : House
Land Size : 768 sqm
View : <https://www.mcneice.com.au/8484435>



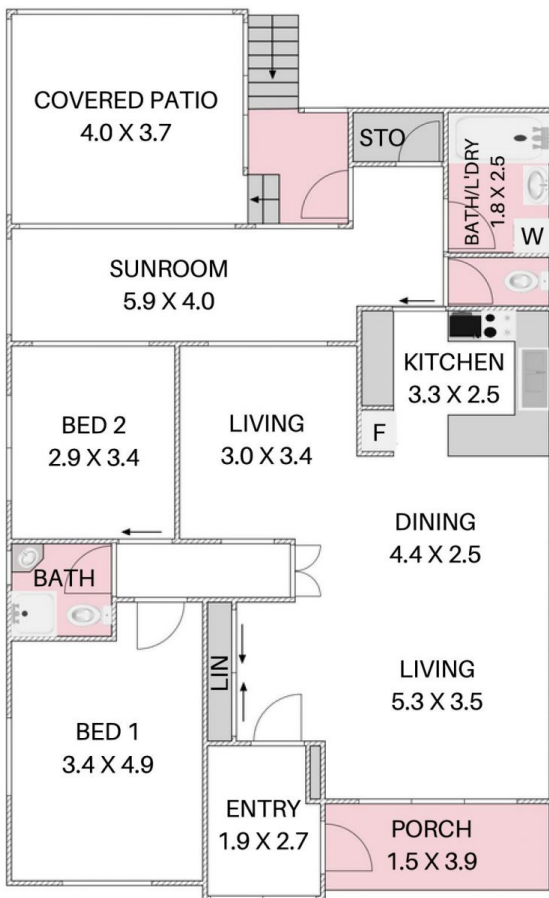
Daniel Mulholland
02 4284 8536



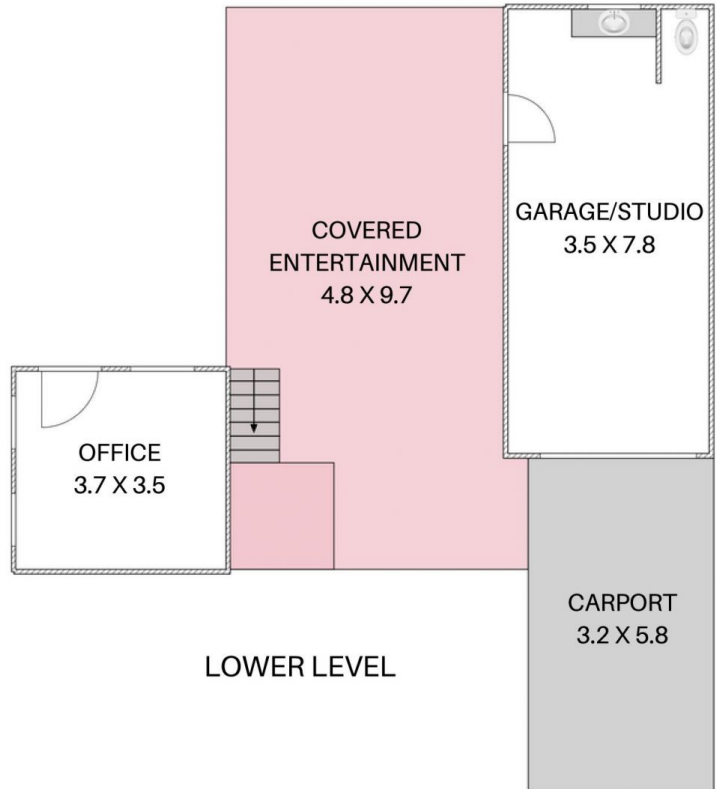
David Hyslop
02 4284 8536

9 CAROLINE ST, CORRIMAL

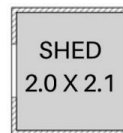
+ molenaar
mcneice



GROUND LEVEL



LOWER LEVEL



(NOT IN LOCATION SHOWN)

HOUSE TOTAL AREA 241.2m²

Plans shown are for presentation purposes and are not part of any legal document. Dimensions are approximate.

