

1/25 Thompson Street Woonona NSW

2 1 1

what you will love?
villa | location | convenience

Centrally located with easy access to local beaches and the Woonona/Bulli shopping hubs. This beautifully maintained villa feels like a home without the maintenance with street frontage and wrap-around courtyard, perfect for downsizing or a young family looking to get into the area.

- + open plan living and dining area with air conditioning
- + generous kitchen with stainless steel appliances, ample bench space
- + paved and private rear courtyard, great for entertaining
- + two good-sized bedrooms all featuring built-in wardrobes

[For full version visit the website](https://www.mcneice.com.au)

Type : Villa
Price : \$ 870,000
Land Size : 216 sqm
View : <https://www.mcneice.com.au/8484427>



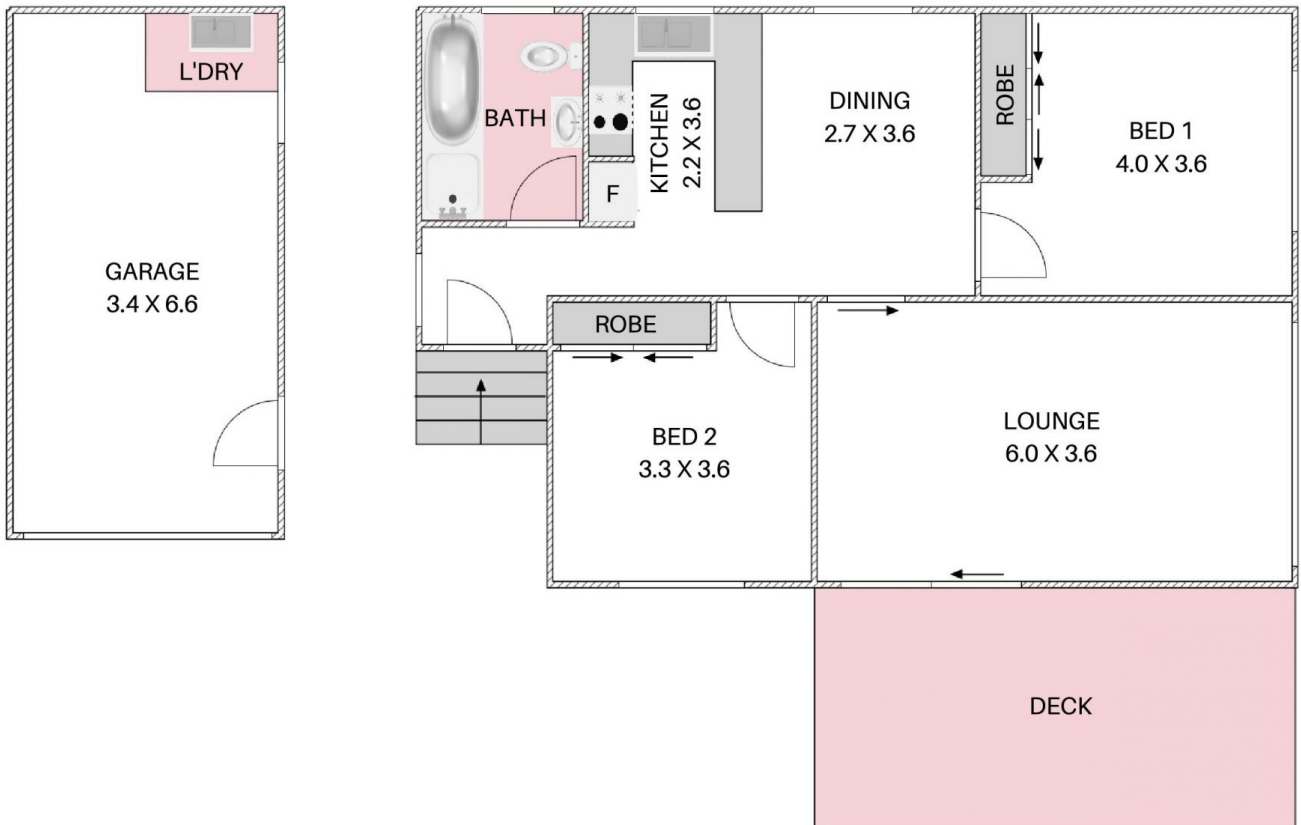
David Hyslop
02 4284 8536



Daniel Mulholland
02 4284 8536

1/25 THOMPSON STREET, WOONONA

+ molenaar
mcneice



HOUSE TOTAL AREA 114.8m²



Plans shown are for presentation purposes and are not part of any legal document. Dimensions are approximate.