

## 48 Brendon Avenue Farmborough Heights NSW

3 1 1

what you will love...  
renovate | views | family

Located in a peaceful elevated position and perched upon a 556sqm block, this original residence offers opportunity and potential to add value over time. You will love the elevated outlook, northeast views, and glimpses of the water. With so much potential, this is a great entry level home for first home buyers and investors to enter the market.

- + open plan kitchen and dining flowing out to large deck
- + three well appointed bedrooms with built ins
- + inviting lounge and living with great natural light

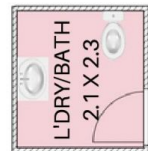
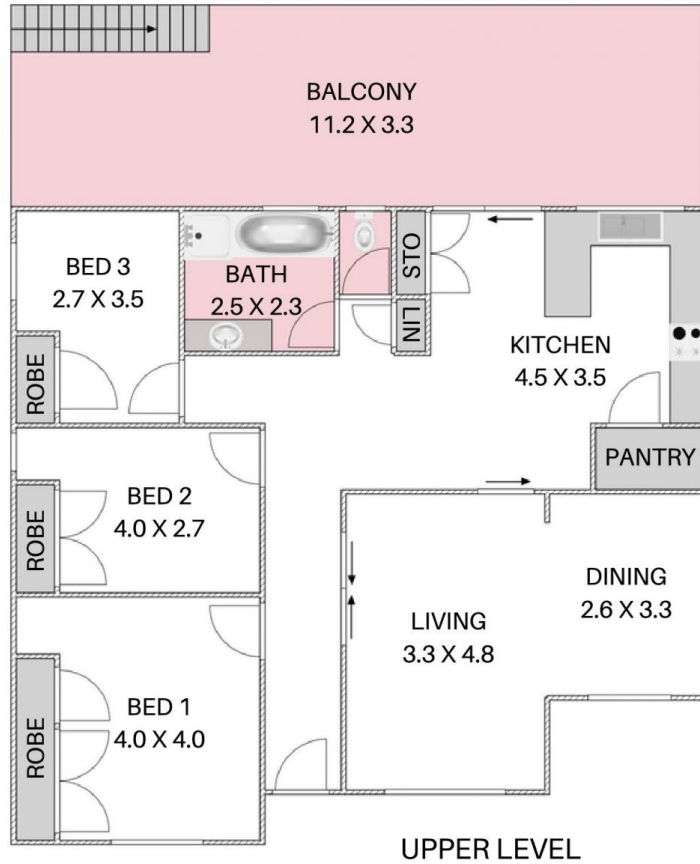
[For full version visit the website](https://www.mcneice.com.au)

**Type** : House  
**Price** : \$ 755,000  
**Land Size** : 566 sqm  
**View** : <https://www.mcneice.com.au/8484419>

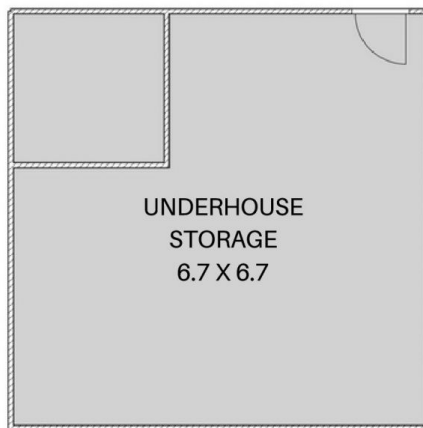


**Danny Peterson**  
02 4284 8536

48 BRENDON AVE, FARMBOROUGH HEIGHTS



LOWER LEVEL



LOWER LEVEL



HOUSE TOTAL AREA 188.5m<sup>2</sup>

Plans shown are for presentation purposes and are not part of any legal document. Dimensions are approximate.