



2 Bellevue Avenue Warilla NSW

3 1 1

what you will love...
renovate | level | spacious

Located in a central position and perched upon a 613sqm level parcel of land, this clad residence offers opportunity and potential to improve. You will love the spacious family friendly layout and large secure backyard. This property is a great entry-level home for first home buyers and investors looking to be close to all amenities. With easy access to Lake Illawarra and beach within a short drive away, this is an ideal position to capitalise on.

- + kitchen and open dedicated dining
- + three bedrooms, master with built ins

[For full version visit the website](https://www.mcneice.com.au)

Type : House
Price : \$ 776,000
Land Size : 613 sqm
View : <https://www.mcneice.com.au/8484414>



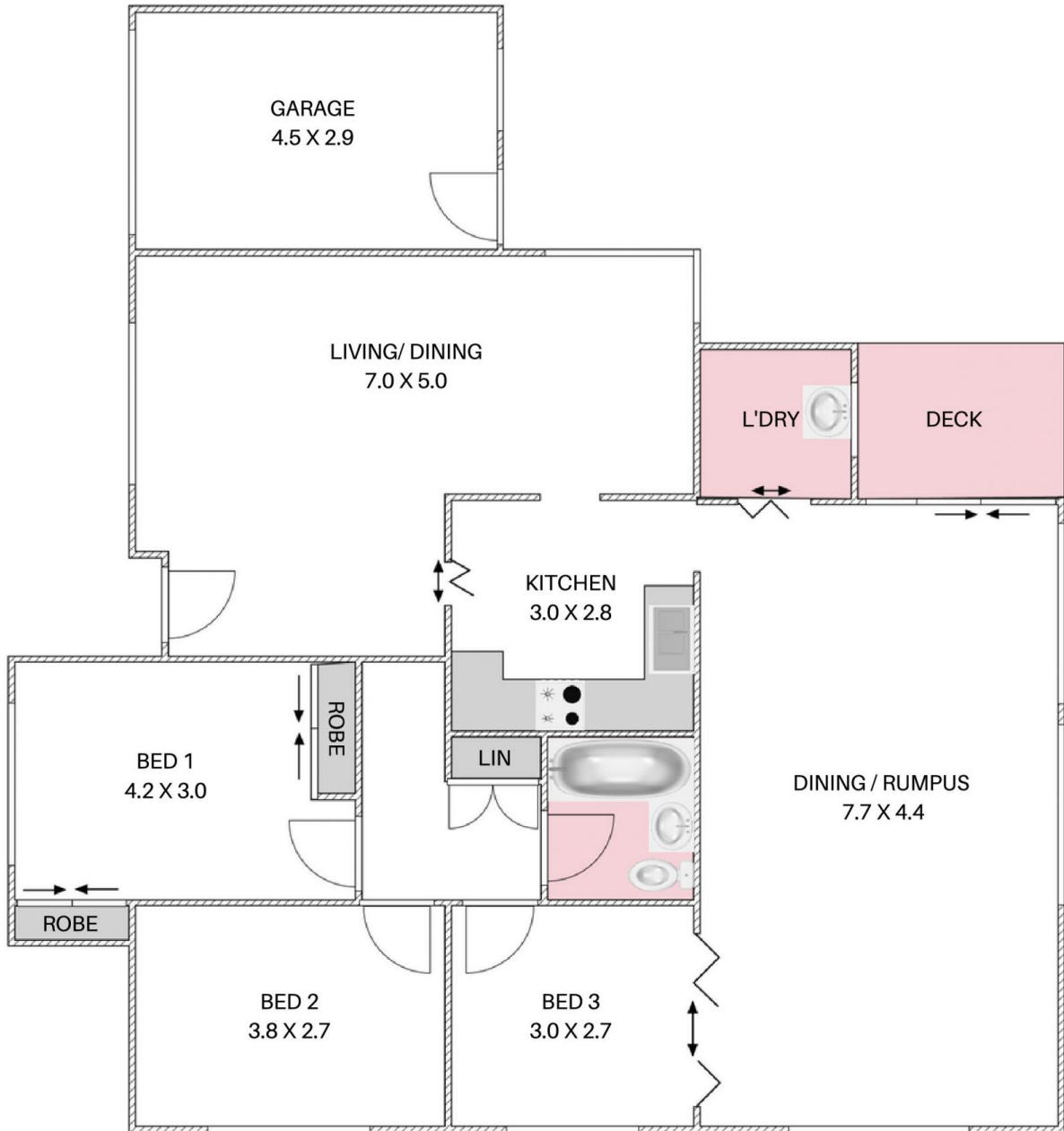
Danny Peterson
02 4284 8536



Matthew Stipcevic
02 4284 8536

2 BELLEVUE AVE, WARILLA

+ molenaar
mcneice



HOUSE TOTAL AREA 134m²

Plans shown are for presentation purposes and are not part of any legal document. Dimensions are approximate.

