



1/30 Market Street Wollongong NSW

3 3 1

what you will love?  
style | location | luxury

With an undeniably cool yet warm NYC vibe, this is one of very few townhouses located directly in the CBD. This is the epitome of more than meets the eye. Think warm yet industrial, meets modern city living. The layout is highly functional with generous living opening out to a huge courtyard. Being located within the CBD, you are literally footsteps to restaurants, bars, cafes and a short stroll to city beach and the blue mile.

+ huge courtyard, perfect for entertaining with built in seating

[For full version visit the website](https://www.mcneice.com.au)

**Type** : Townhouse

**Price** : \$ 985,000

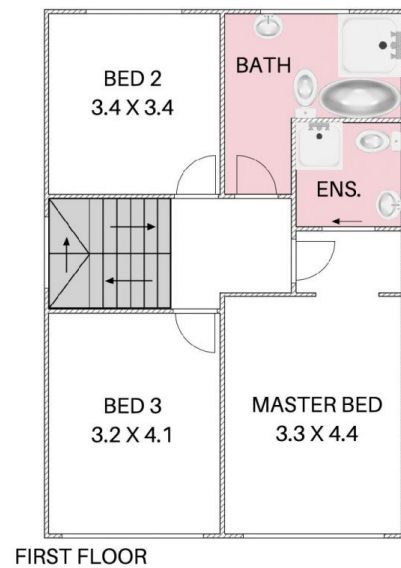
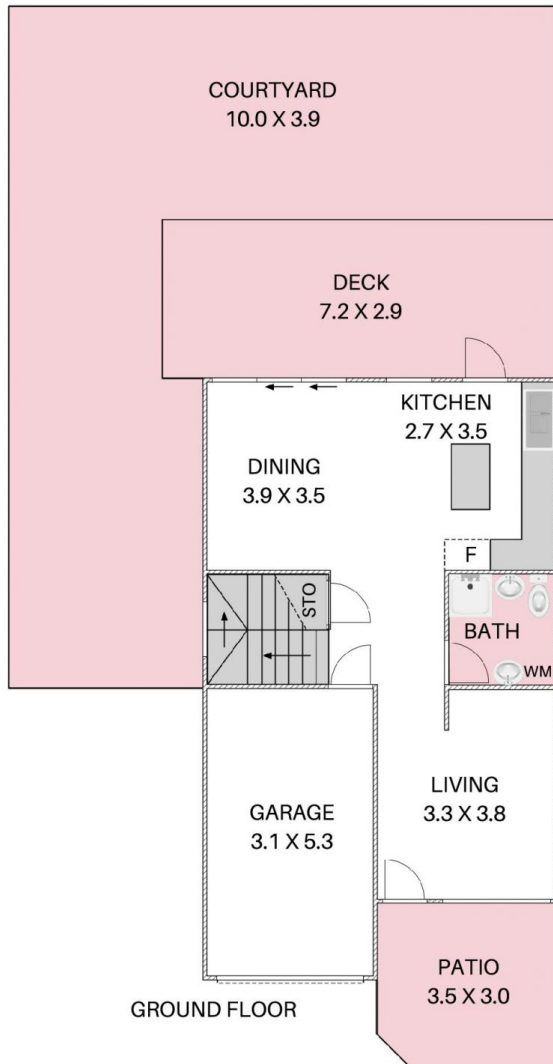
**View** : <https://www.mcneice.com.au/8484410>



**Danny Peterson**  
02 4284 8536

1/30 MARKET ST, WOLLONGONG

+ molenaar  
mcneice



HOUSE TOTAL AREA 224m<sup>2</sup>

Plans shown are for presentation purposes and are not part of any legal document. Dimensions are approximate.

