

1/19 Elliotts Road Fairy Meadow NSW

3 2 2

what you will love?
location | modern | light-filled

Situated within walking distance to the vibrant centre of Fairy Meadow and popular patrolled beaches is this North Facing and contemporary townhome. Featuring bright interiors, modern finishes and open plan areas leading onto the patio, perfect for entertaining on warm afternoons. Generous spaces and immaculate presentation throughout, this is perfectly suited for those who desire a low maintenance and entertainers' lifestyle in a beachside locale.

+ three generous bedrooms of accommodation with built-in

[For full version visit the website](#)

Type : Townhouse
Price : \$ 1,045,000
View : <https://www.mcneice.com.au/8484372>

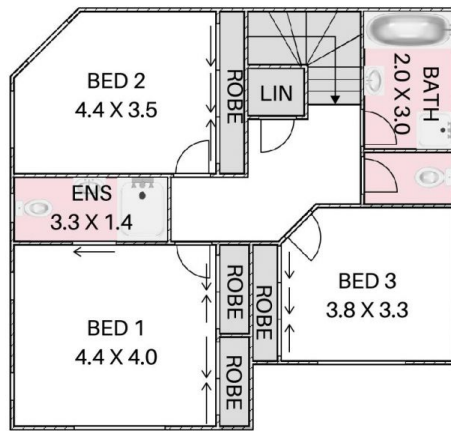


Daniel Mulholland
02 4284 8536

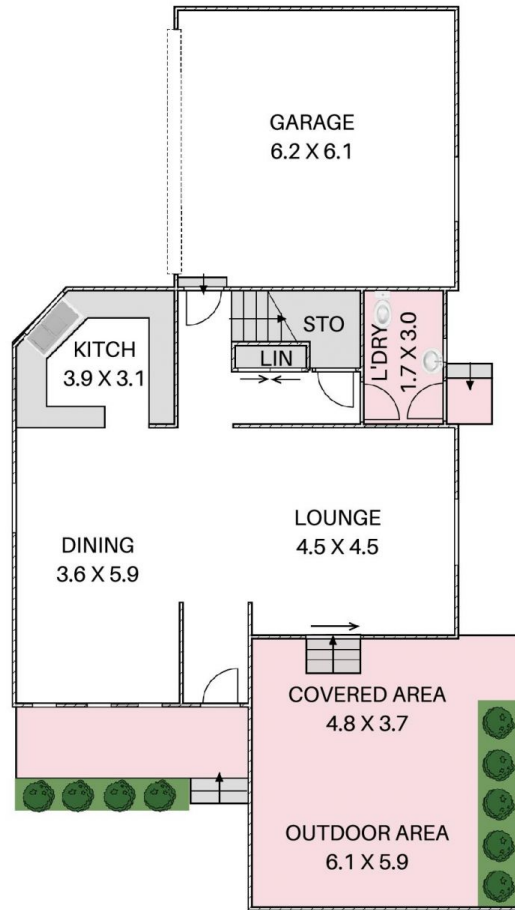


David Hyslop
02 4284 8536

1.19 ELLIOTTS ROAD, FAIRY MEADOW



UPPER FLOOR



GROUND FLOOR

HOUSE TOTAL AREA 223m²

Plans shown are for presentation purposes and are not part of any legal document. Dimensions are approximate.

