

5 Acacia Avenue Gwynneville NSW

3 1 1

what you will love?
position | block | convenience

Bringing a rustic feel and immense potential to its peaceful yet central locale, this home is perfect for those looking for a unique city-fringe home. Set low-side with a large rear yard and backing onto a reserve. Widely fronted and spacious, renovate or replace (STCA) a quick stroll to the bus, Gwynneville shopping precinct and walking distance to public and private primary schools.

+ substantial 928m2 approx. block 15.24m x 60.76 m
+ 1940s built, period features throughout and so much potential

[For full version visit the website](https://www.mcneice.com.au/8484371)

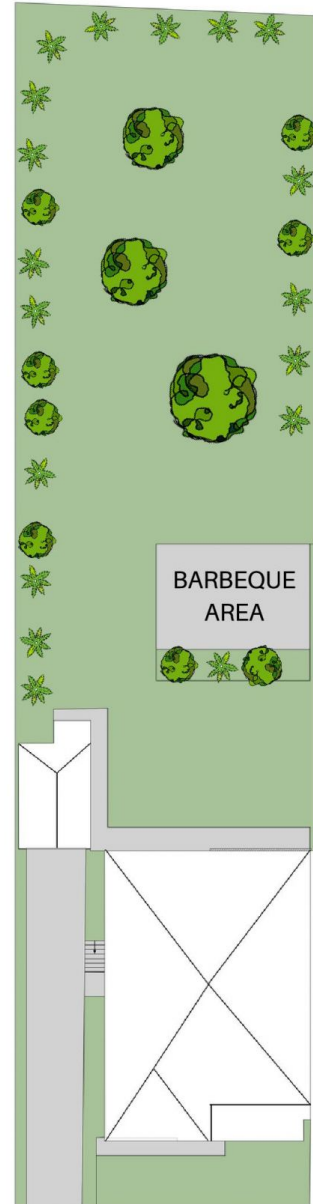
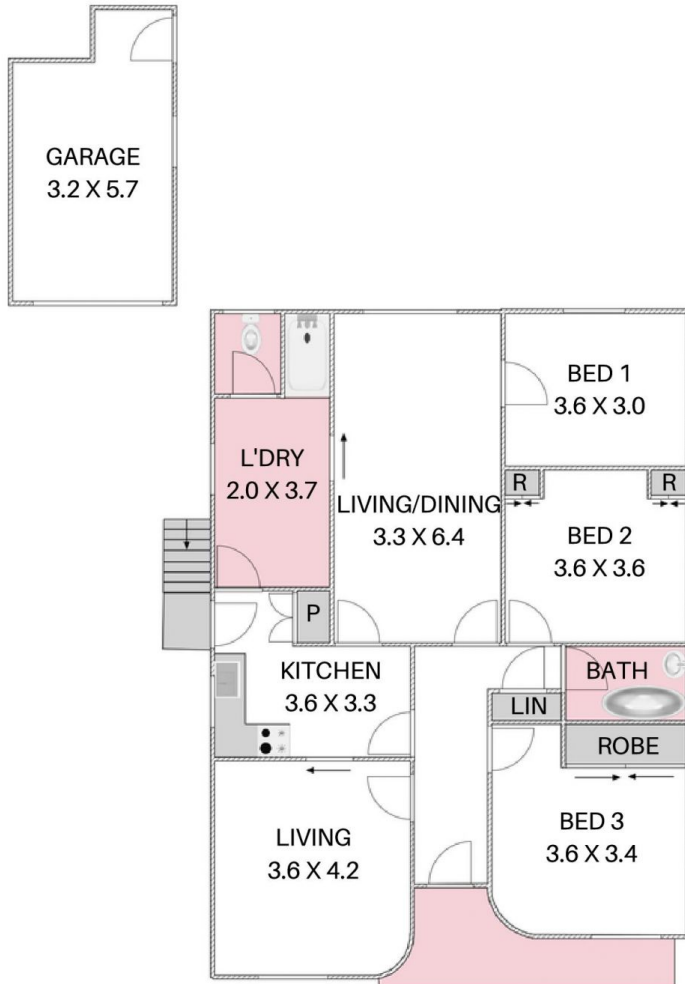
Type : House
Price : \$ 1,150,000
Land Size : 928 sqm
View : <https://www.mcneice.com.au/8484371>



Danny Peterson
02 4284 8536

5 ACACIA AVENUE, GWYNNEVILLE

+ molenaar
mcneice



HOUSE TOTAL AREA 133m²
SITE TOTAL AREA 442m²

Plans shown are for presentation purposes and are not part of any legal document. Dimensions are approximate.

