



## 2/10 Platypus Close Figtree NSW

2  1  1 

what you will love?  
modern | convenience | light

Positioned in a complex of only three, this immaculate townhouse has been tastefully presented and simply ready to enjoy. Located within easy reach of local parks and major shopping.

- + situated in the middle of the complex with plenty of natural light
- + generous kitchen with gas cooking and ample bench space
- + tiled flooring, air conditioning, ceiling fans in the living and master

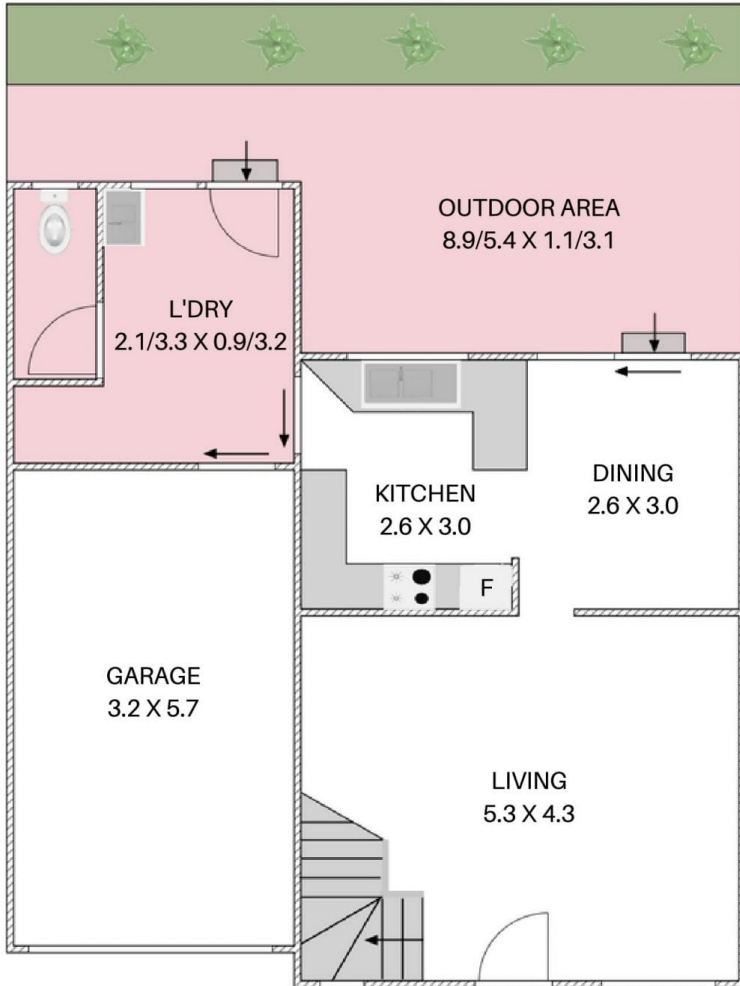
[For full version visit the website](#)

**Type** : Townhouse  
**Price** : \$ 651,000  
**View** : <https://www.mcneice.com.au/8484370>

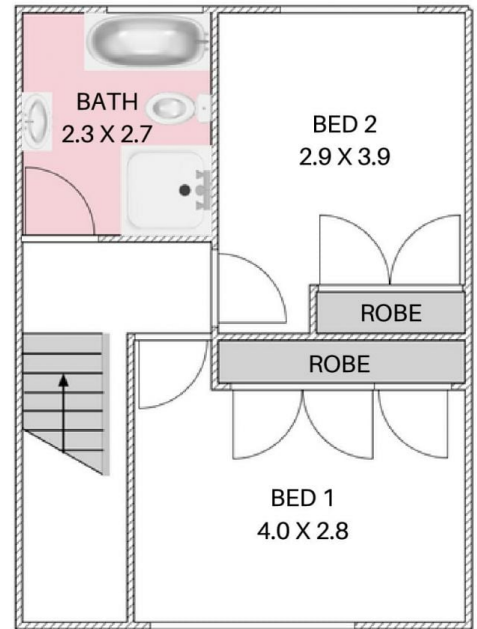


**Danny Peterson**  
02 4284 8536

2/10 PLATYPUS CL, FIGTREE



GROUND LEVEL



FIRST LEVEL

HOUSE TOTAL AREA 128m<sup>2</sup>

Plans shown are for presentation purposes and are not part of any legal document. Dimensions are approximate.

