



## 22 Mount Keira Road West Wollongong NSW

3 2

what you will love...  
contemporary | location | entertaining

In a central location, this home has been meticulously renovated to a high standard. With character features such as high ornate ceilings and generous bedrooms, the home has been extended and updated to embrace the modern-day family. The centerpiece of the home is the open plan kitchen with a stone island bench that is encompassed by the living and dining that flow to a north-facing alfresco deck and huge yard.

+ stone kitchen with island bench, butler style pantry with ample storage and prep area

[For full version visit the website](https://www.mcneice.com.au/8484318)

**Type** : House  
**Price** : \$ 890,000  
**Land Size** : 588 sqm  
**View** : <https://www.mcneice.com.au/8484318>

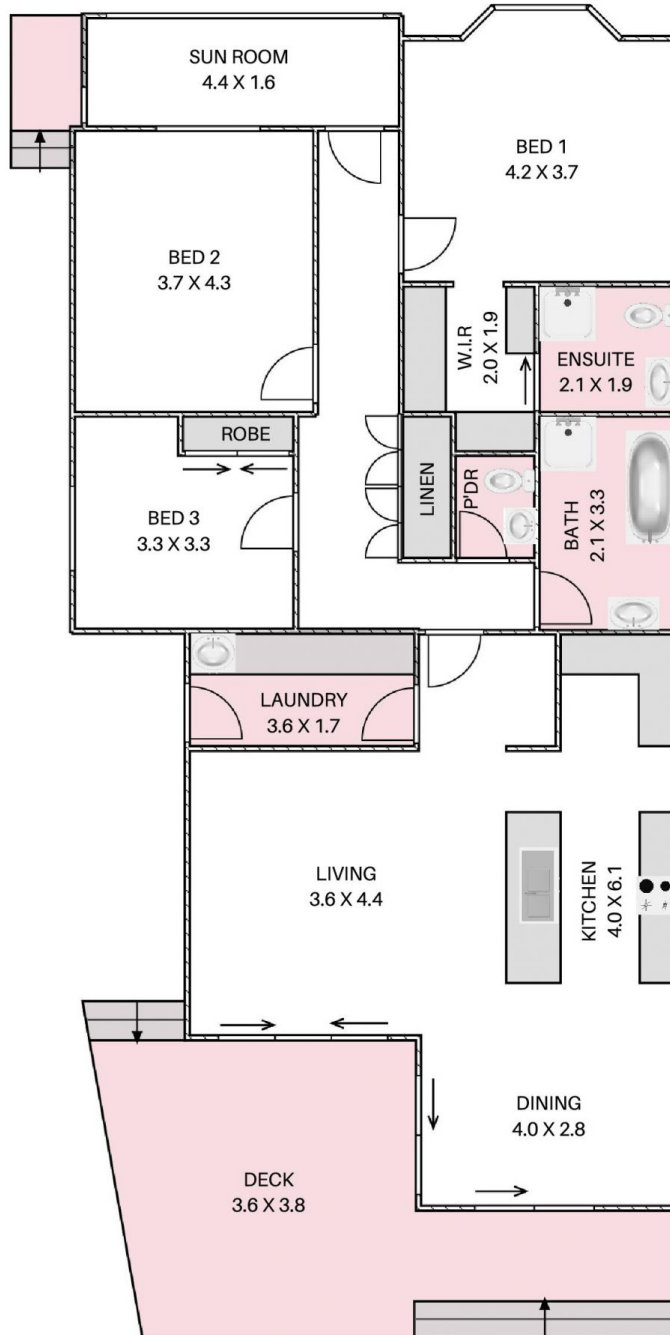


**Danny Peterson**  
02 4284 8536



**Guy Hampton**  
02 4284 8536

22 MOUNT KEIRA ROAD, WEST WOLLONGONG



HOUSE TOTAL AREA 179.8m<sup>2</sup>

Plans shown are for presentation purposes and are not part of any legal document. Dimensions are approximate.

