

405/53 Crown Street Wollongong NSW

2 2 2

what you will love?

cafes | entertainment | terrace | views

Set over two generous levels this townhouse style apartment enjoys northern light and city views. Surrounded by the cafe precinct and South beach, entertainment centre and Wollongong mall only a short stroll away.

- + oversized podium level courtyard with elevated views
- + open plan living with timber floorboards throughout
- + townhouse style apartment set over two levels
- + light kitchen with stone benches and stainless-steel appliances
- + functional floorplan with bedrooms separate from the

Type : Apartment

Price : \$ 560,000

View : <https://www.mcneice.com.au/8484289>

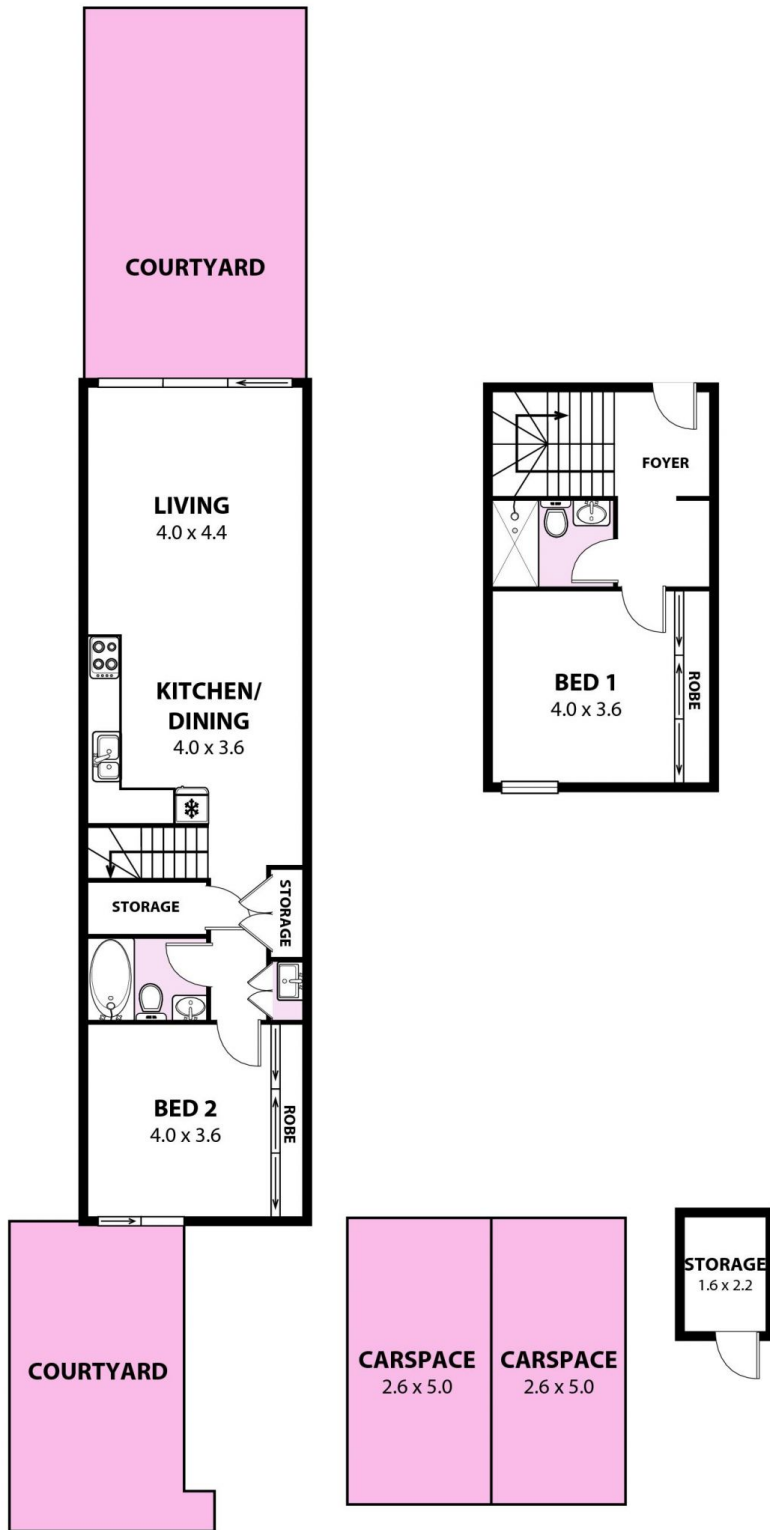


Danny Peterson
02 4284 8536



Troy McNeice
02 4284 8536

[For full version visit the website](#)



+ molenaar
mcneice

405/53-61 Crown Street Wollongong

Plans shown are for presentation purposes and are not part of any legal document. Dimensions are approximate. AR2

