



1106/41 Crown Street Wollongong NSW

2 2 1

what you will love?

views | beach | convenience | lifestyle

Located in the city centre in 'Crown', this contemporary north facing apartment located on level 11 offers uninterrupted ocean and escarpment views. The central location within the vibrant lower crown street further adds to the appeal and City Beach is within a few hundred metres. Perfect for investors, downsizers or those seeking a Sydney escape or weekender.

+ set on the 11th floor with beautiful ocean and escarpment views

+ north-facing aspect capturing natural light through the

[For full version visit the website](https://www.mcneice.com.au/8484249)

Type : Apartment

Price : \$ 850,000

View : <https://www.mcneice.com.au/8484249>

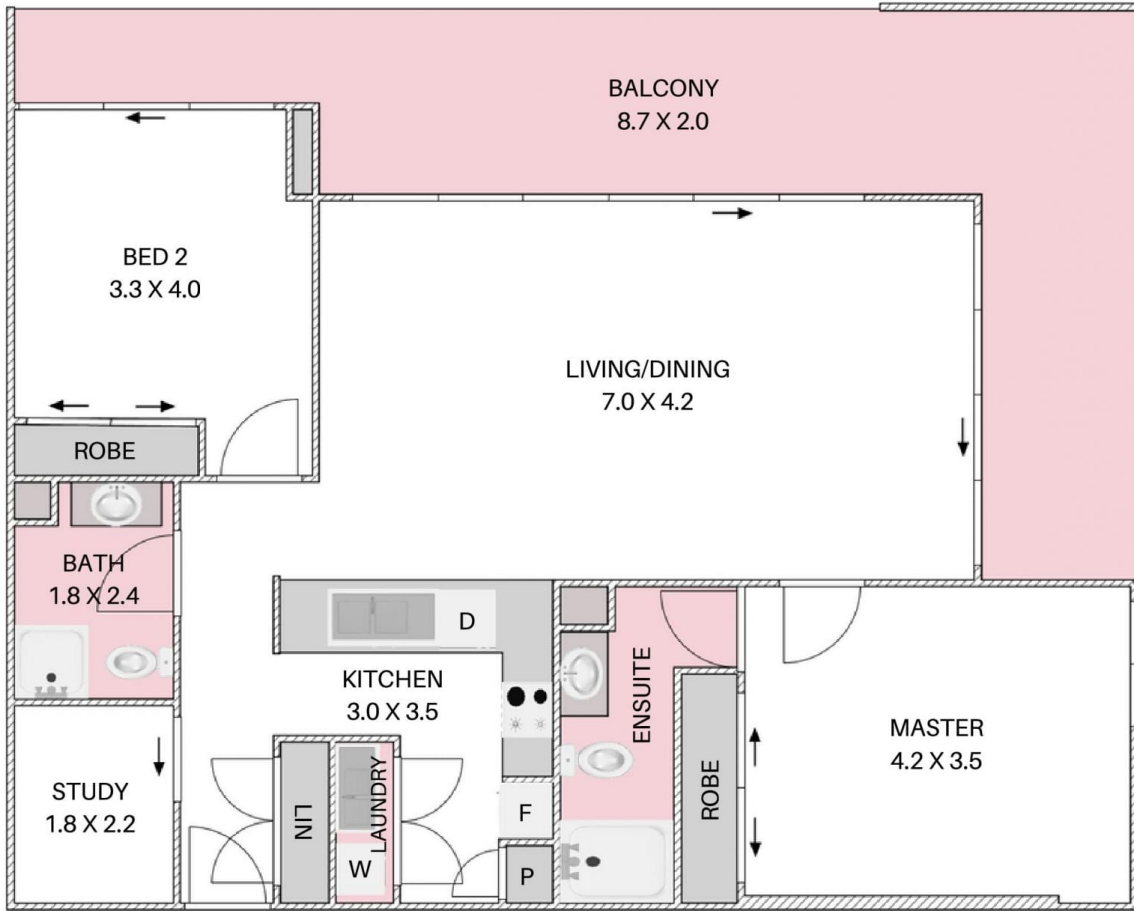


Danny Peterson
02 4284 8536

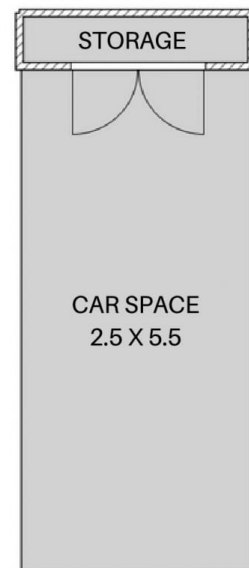


Daniel Mulholland
02 4284 8536

1106/41 CROWN ST, WOLLONGONG



HOUSE TOTAL AREA
132 m²



Plans shown are for presentation purposes and are not part of any legal document. Dimensions are approximate.