



8 Southampton Street Berkeley NSW

3 1 1

what you will love?

sun-drenched | potential | lake | lifestyle

In a slightly elevated position only metres from the lake, this property is the perfect option for those looking for a blank canvas in an affordable lake-side suburb. The original residence is as neat as a pin and has been well maintained including a fresh coat of paint throughout. * please contact us to arrange a private viewing if preferred.

- + three bedroom clad home with loads of potential
- + open plan kitchen featuring eat-in dining room
- + raw timber boards, ready to be sanded and polished
- + desirable views across the water never to be built out

[For full version visit the website](https://www.mcneice.com.au)

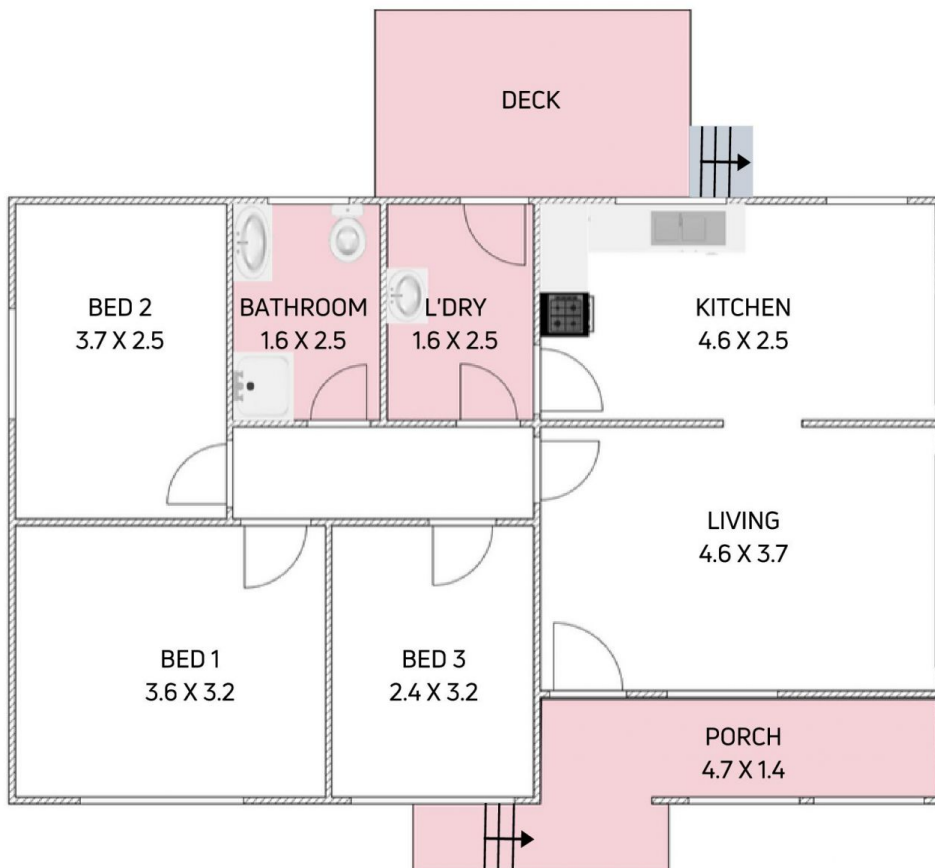
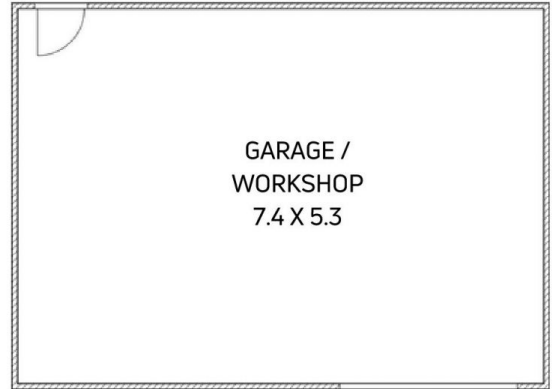
Type : House
Price : \$ 580,000
Land Size : 604 sqm
View : <https://www.mcneice.com.au/8484129>



Danny Peterson
02 4284 8536

8 SOUTHAMPTON STREET, BERKELEY

+ molenaar
mcneice



Plans shown are for presentation purposes and are not part of any legal document. Dimensions are approximate.

