



68 Parkes Street Helensburgh NSW

3  1  2 

what you will love...
character | modern | community | entertaining

This exceptionally stylish cottage has been transformed into a contemporary entertainer's haven. This home is ready for immediate enjoyment and is conveniently located close to schools, the local train station, and only minutes to Helensburgh village. * please contact us to arrange a private viewing if preferred.

- + free flowing layout is bright and airy with neutral colour tones
- + indoor/outdoor living and entertaining with verdant outlook

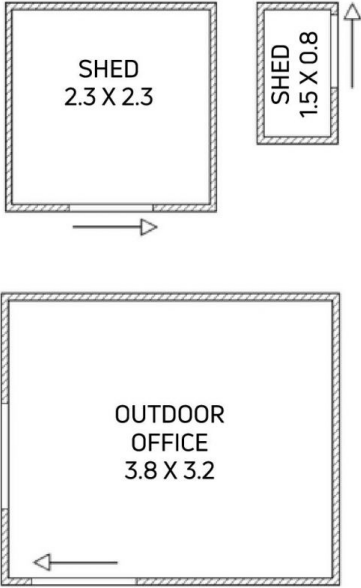
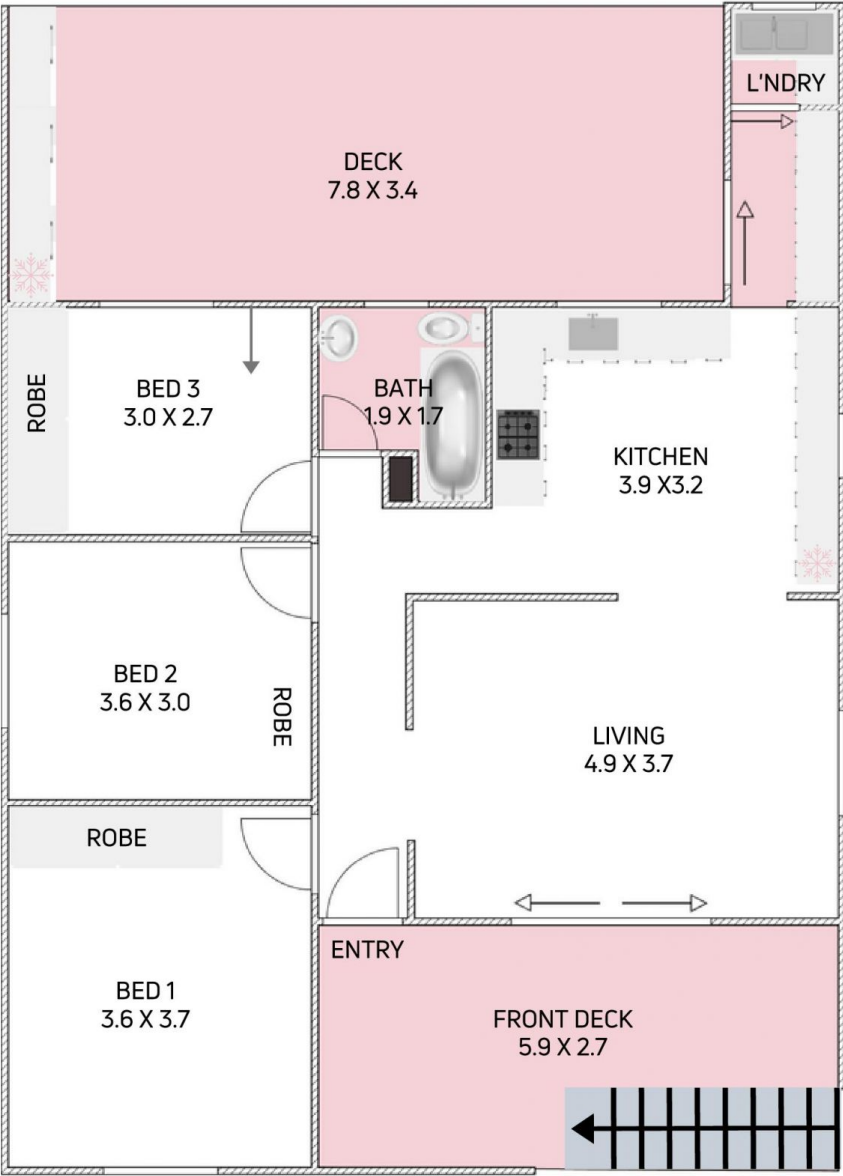
[For full version visit the website](https://www.mcneice.com.au)

Type : House
Price : \$ 841,500
Land Size : 511 sqm
View : <https://www.mcneice.com.au/8484127>



Danny Peterson
02 4284 8536

68 PARKES STREET, HELENSBURGH



Plans shown are for presentation purposes and are not part of any legal document. Dimensions are approximate.

