

## 7 Beatson Street Wollongong NSW

7 🛏 5 🚗 2 🚗

what you will love?

location | golf | enormous | city

A purpose-designed and built home especially suited for dual or extended families. This enormous residence is located on the fringe of the CBD and is only minutes from Wollongong golf course, beaches and all the cafes and eateries that the city provides.

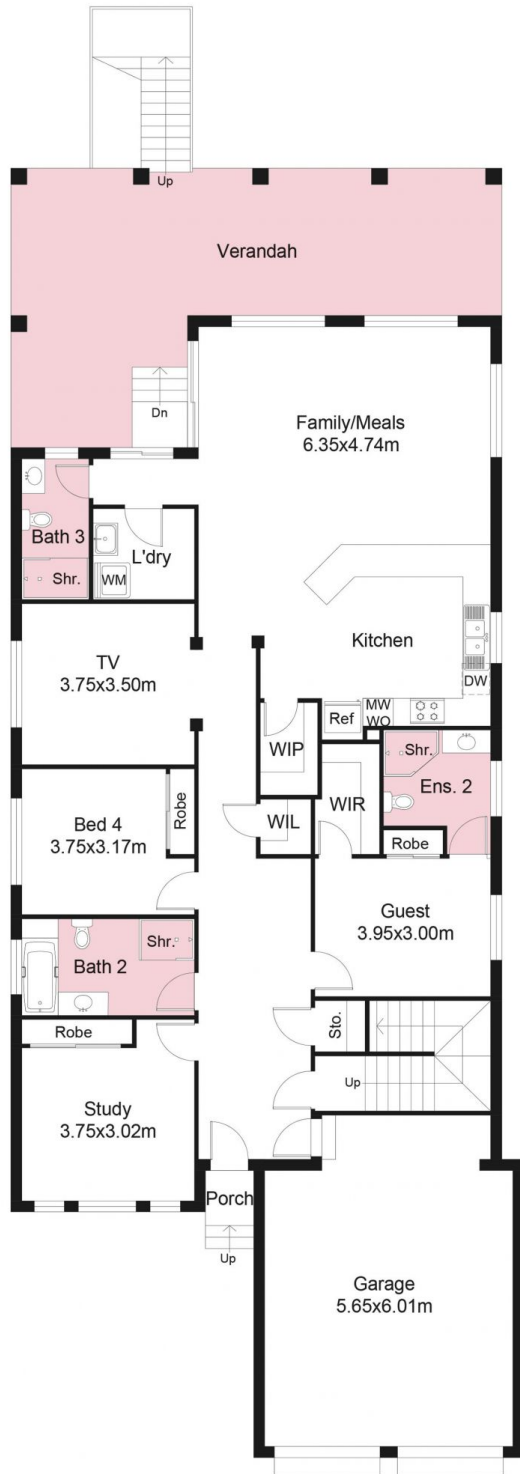
- + six double bedrooms, one single bedroom, two walk-in wardrobes
- + dual modern kitchens on each level with quartz benchtops
- + full width balcony with easterly views, private landscaped

[For full version visit the website](#)

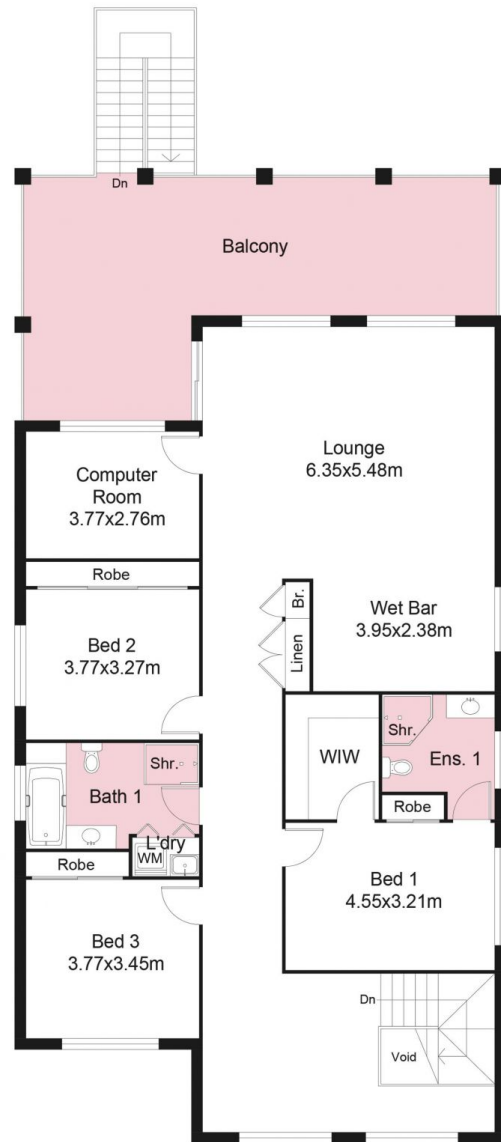
**Type** : House  
**Price** : \$ 1,800,000  
**Land Size** : 607 sqm  
**View** : <https://www.mcneice.com.au/8484027>



**Danny Peterson**  
02 4284 8536



GROUND FLOOR PLAN



FIRST FLOOR PLAN

This floor plan including furniture, fixture measurements and dimensions are approximate and for illustrative purposes only. Boxbrownie.com gives no guarantee, warranty or representation as to the accuracy and layout. All enquiries must be directed to the agent, vendor or party representing this floor plan.

Area: 197 sq.m.

7 Beatson Street, Wollongong