



4 Cope Place Bulli NSW

4 🏠 3 🚗 2 🚘

what you will love?

privacy | space | modern | entertaining

Unique and rarely found, this home without a doubt fits this description. Ideally located in a tree-lined cul-de-sac surrounded by nature, this tri-level home has been updated and is perfectly appointed for a family seeking generous living.

- + spacious residence encompassed by privacy and nature
- + contemporary throughout with a rich timber exterior
- + open plan kitchen with stainless steel 900mm gas cooktop
- + multiple living spaces including large family area

Type : House

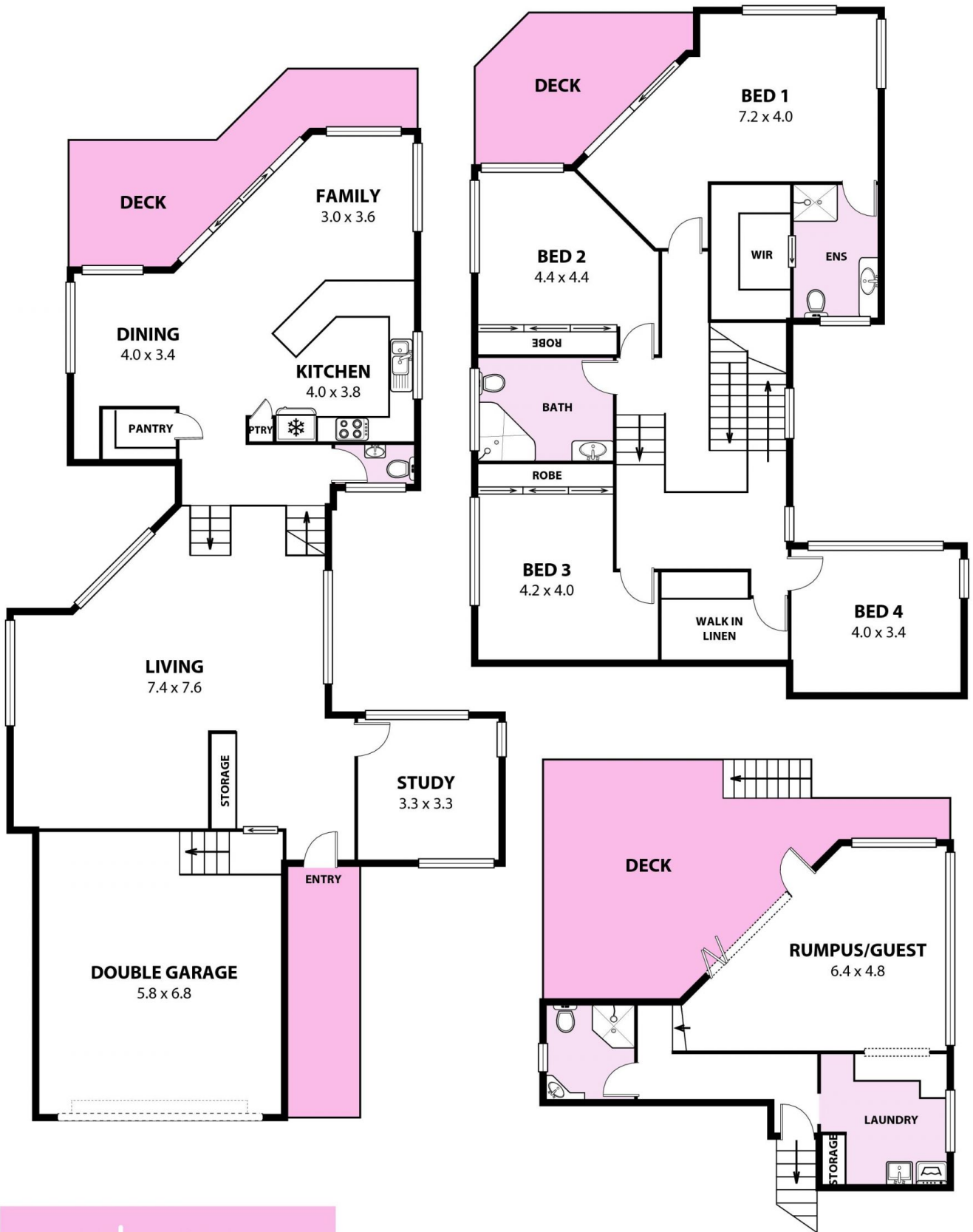
Land Size : 892 sqm

View : <https://www.mcneice.com.au/8484016>



Danny Peterson
02 4284 8536

[For full version visit the website](https://www.mcneice.com.au)



4 Cope Place Bulli

Plans shown are for presentation purposes and are not part of any legal document. Dimensions are approximate. AR2

