



8 Holborn Street Berkeley NSW

3 1 1

what you will love?

summer | potential | lake | lifestyle

Positioned directly across from the lake, properties in this location are limited, making this an excellent opportunity to secure your future by the water. This original cottage is the perfect blank canvas in a prime location.

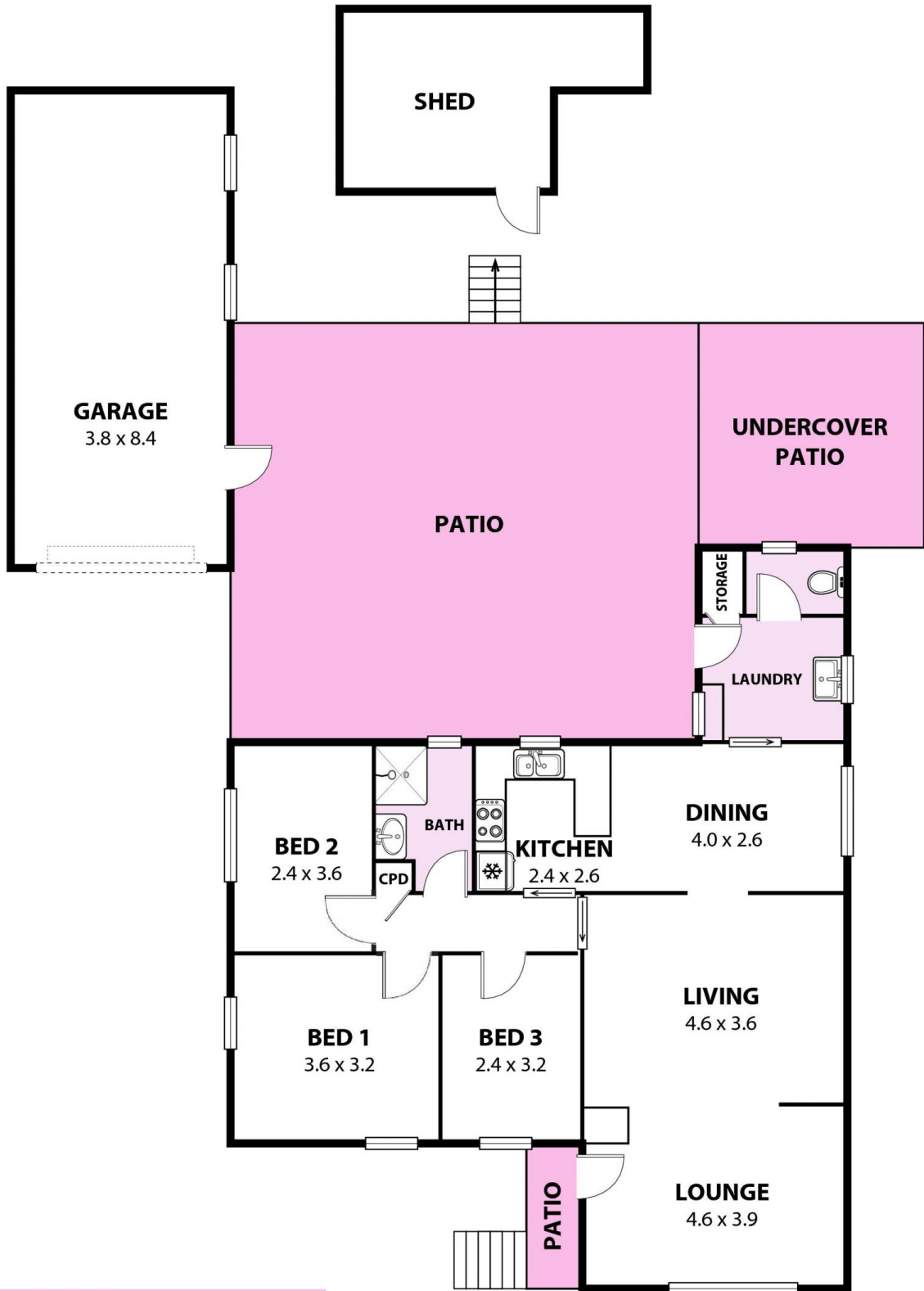
- + three bedroom clad home with loads of potential
- + uninterrupted views across the water never to be built out
- + level 630 sqm parcel of land with a 19m frontage
- + renovate or rebuild your dream home in a prime lakeside location
- + families will love the easy access to the park and

[For full version visit the website](https://www.mcneice.com.au)

Type : House
Price : \$ 620,000
Land Size : 630 sqm
View : <https://www.mcneice.com.au/8483973>



Danny Peterson
02 4284 8536



**+ molenaar
mcneice**

8 Holborn Street Berkeley

Plans shown are for presentation purposes and are not part of any legal document. Dimensions are approximate. AR2

