



11 Whimbrel Avenue Berkeley NSW

4 3 2

what you will love?

grand | luxury | modern | pool

This luxurious family home is situated in a fantastic location close to schools, transport, shops and the beautiful Lake Illawarra. Exuding an executive feel with double-door entry, internal bridge over a koi pond and a versatile floorplan boasting four separate living spaces. With a sunken formal lounge and a mix of tiles and hardwood polished floors throughout, as well as an inspiring modern kitchen this is definitely the home to inspect.

+ a unique home with quality construction and finishes
+ mixture of tiles and polished hard wood floors throughout

[For full version visit the website](https://www.mcneice.com.au)

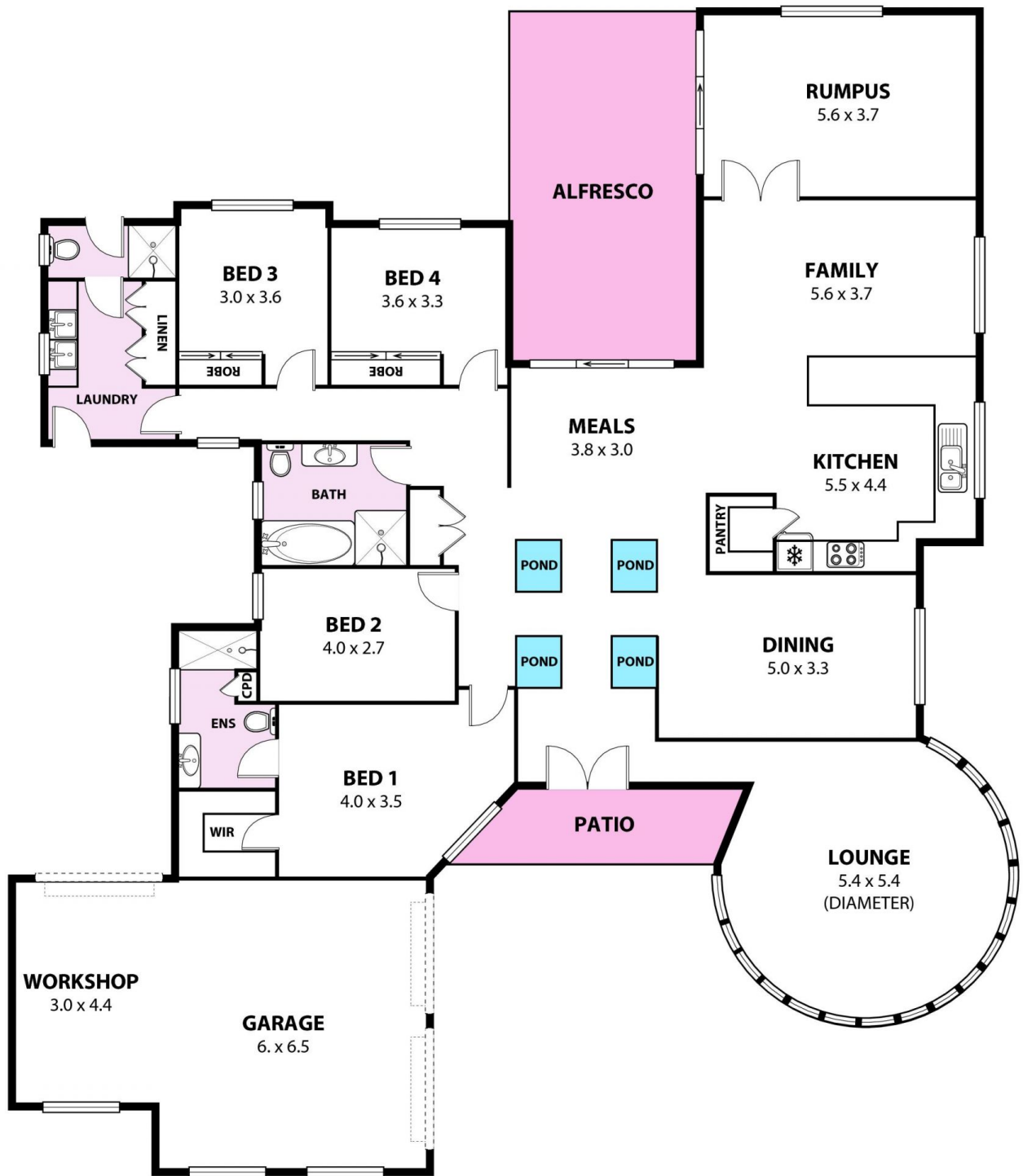
Type : House
Price : \$ 840,000
Land Size : 835 sqm
View : <https://www.mcneice.com.au/8483966>



Danny Peterson
02 4284 8536



Troy McNeice
02 4284 8536



+ molenaar
mcneice

11 Whimbrel Avenue, Berkeley

Plans shown are for presentation purposes and are not part of any legal document. Dimensions are approximate. AR2

