



5 Wattle Street Windang NSW

3 1 2

what you will love...
value | lake | family | summer

Set within metres of Lake Illawarra, and minutes to beautiful pristine beaches, this is an excellent opportunity for first home buyers, investors and holiday makers alike. Don't miss this chance to purchase in a sought-after coastal location only moments to all conveniences.

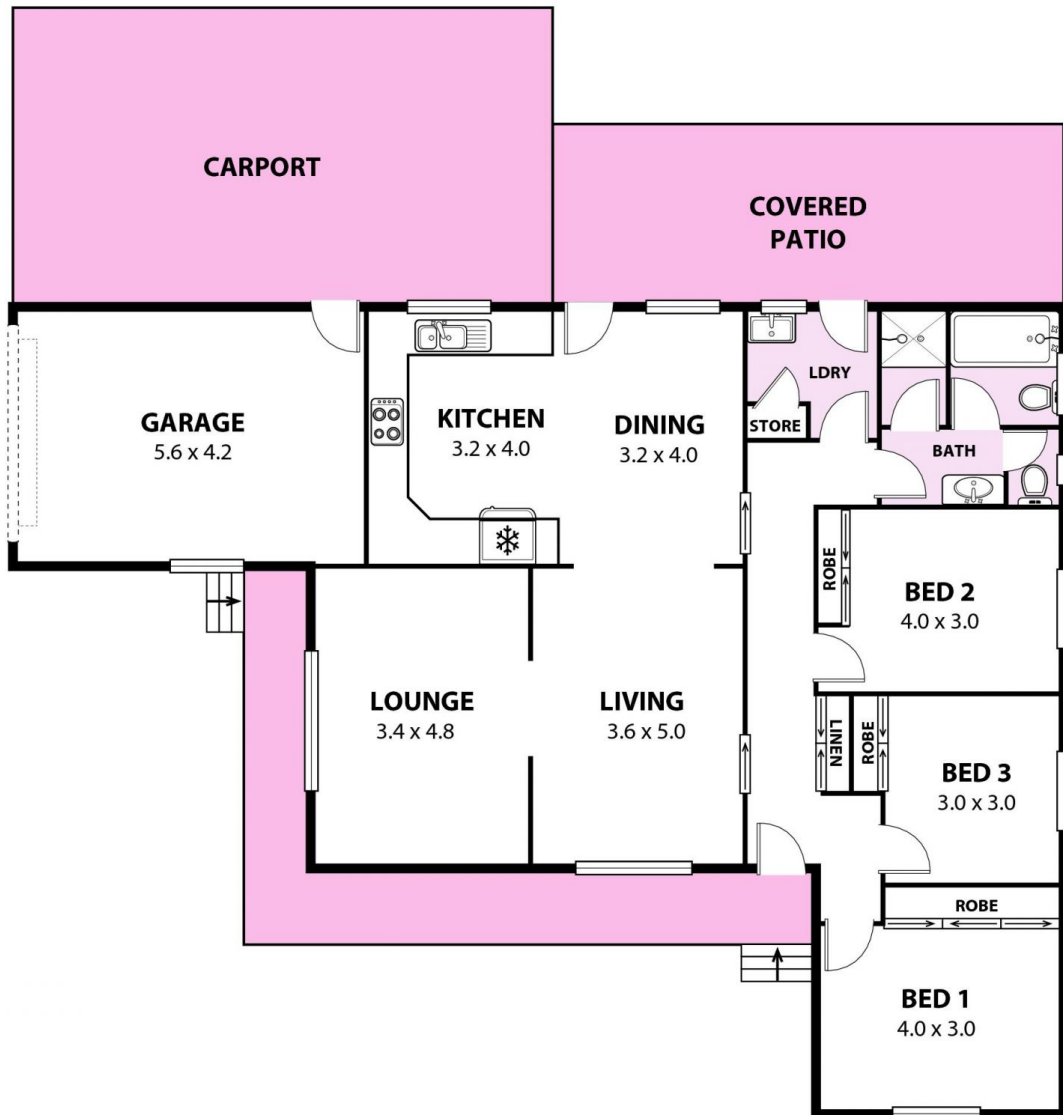
- + practical floorplan, highly desirable to growing families
- + polished timber floorboards, bright and fresh throughout
- + spacious interior with a lovely north facing aspect
- + open plan kitchen and dining, flowing to outdoors with ease

[For full version visit the website](https://www.mcneice.com.au/8483935)

Type : House
Price : \$ 585,000
Land Size : 651 sqm
View : <https://www.mcneice.com.au/8483935>



Danny Peterson
02 4284 8536



5 Wattle Street Windang

Plans shown are for presentation purposes and are not part of any legal document. Dimensions are approximate. AR2

