



## 23 Black Diamond Place Bulli NSW

4 2 2

what you will love...  
modern | family | downsize | convenience

Set in a quiet cul-de-sac and adjoining parklands, this wonderful single level home has been tastefully rejuvenated. Exuding a warm and inviting feeling, this home offers a generous floorplan with dual living options either side of the central kitchen and flows effortlessly to gardens and entertaining.

- + a flexible home suits families/downsizers not wanting to sacrifice
- + freshly presented, newly painted and new flooring throughout

[For full version visit the website](https://www.mcneice.com.au)

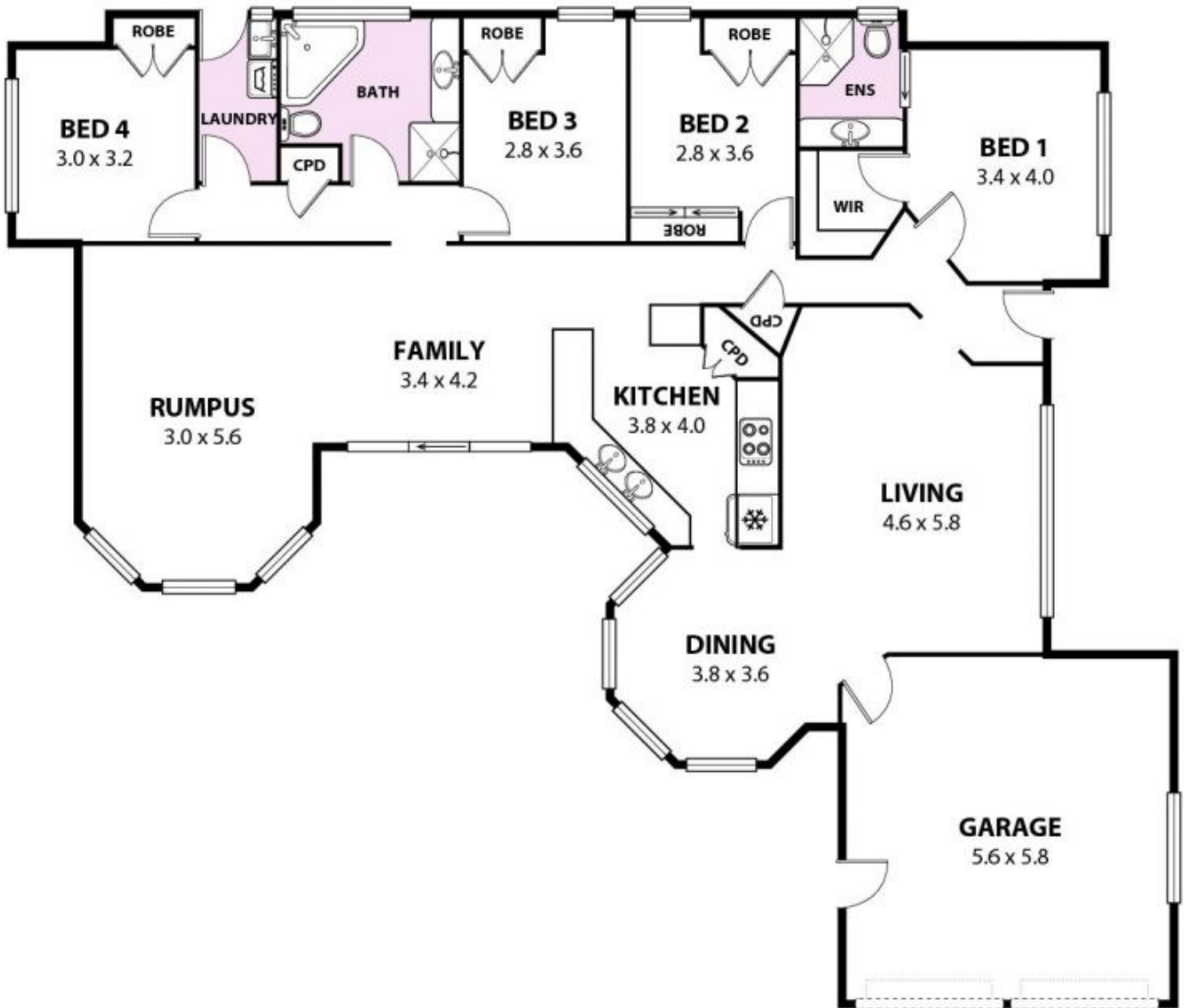
**Type** : House  
**Price** : \$ 920,000  
**Land Size** : 639 sqm  
**View** : <https://www.mcneice.com.au/8483845>



**Troy McNeice**  
02 4284 8536



**Danny Peterson**  
02 4284 8536



**23 Black Diamond Place Bulli**

INTERNAL SPACE 184m<sup>2</sup> (approx)

Plans shown are for presentation purposes and are not part of any legal document or title and are subject to errors, omissions, inaccuracies and should not be used as sole and accurate reference. Particulars given are for general information only and do not constitute any representation on the part of the vendor or agent. No liability will be accepted.

AR2