

## 2 Payne Street Mangerton NSW

3 2 1

what you will love...

space | style | location | entertaining

Blending classic charm and modern conveniences, this spacious north facing residence presents exciting possibilities to create a superb family home only moments to the CBD. As you walk through the front door you will immediately sense the charming quality of the fittings and finish of this warming home. A land parcel of 803 sqm ensures there is ample room inside and out.

+ desirable living and dining areas exuding homely interiors and surrounds

+ open plan kitchen with gas Smeg stove, stone bench

[For full version visit the website](#)

**Type** : House

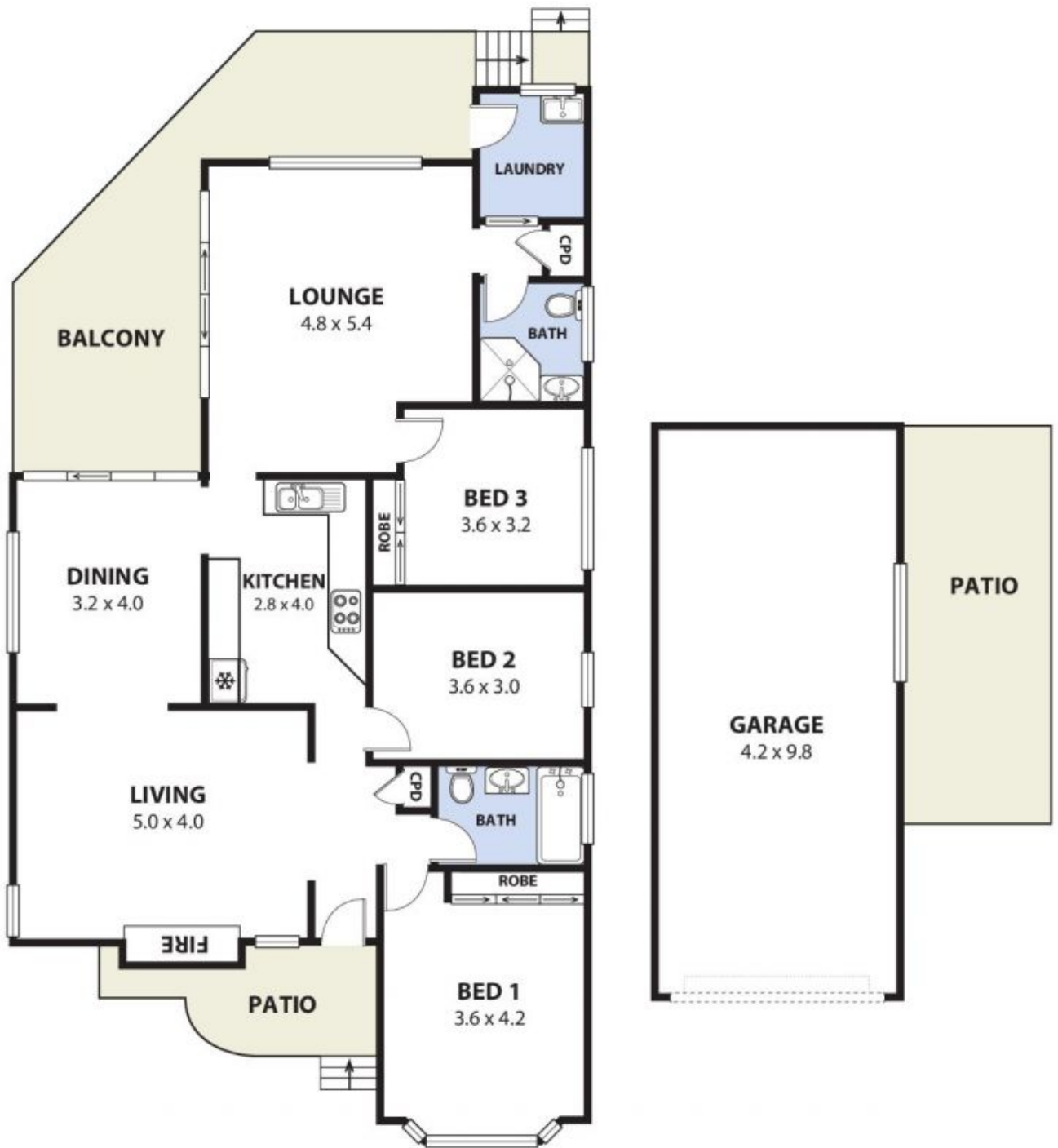
**Price** : \$ 765,000

**Land Size** : 803 sqm

**View** : <https://www.mcneice.com.au/8483749>



**Danny Peterson**  
02 4284 8536



**2 Payne Street Mangerton**

INTERNAL SPACE 186m2 (approx)

Plans shown are for presentation purposes and are not part of any legal document or title and are subject to errors, omissions, inaccuracies and should not be used as sole and accurate reference. Particulars given are for general information only and do not constitute any representation on the part of the vendor or agent. No liability will be accepted.

AR2