



6/2-4 Kent Road Dapto NSW

3  1  1 

convenient | space | tranquil

Conveniently positioned in a small complex with easy access to Dapto mall, the M1 motorway and all local amenities. This spacious three-bedroom townhouse enjoys a practical layout, a great view of the Illawarra escarpment at the rear and is perfect for first-home buyers or investors wanting to enter the market.

Type : Townhouse

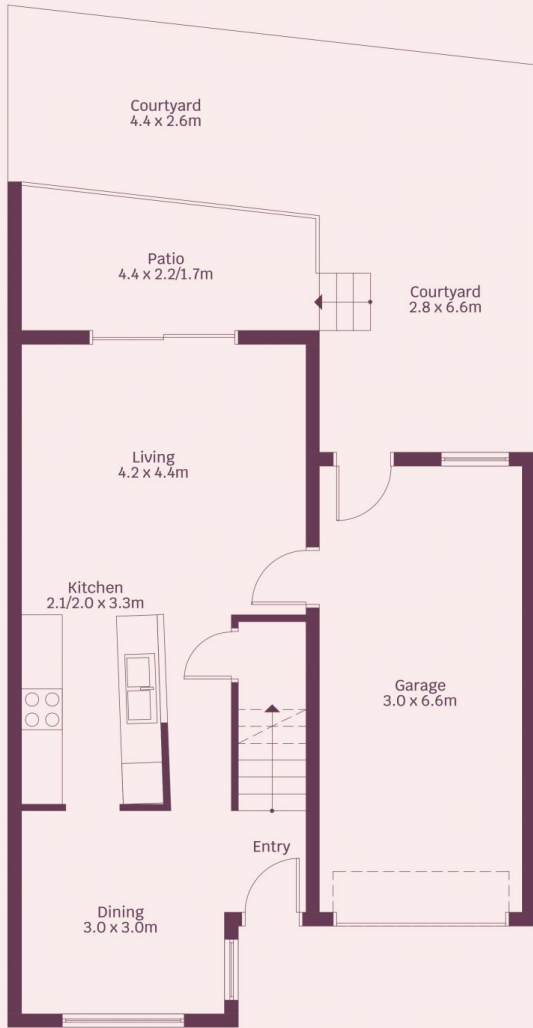
Price : \$ 585,000

View : <https://www.mcneice.com.au/8483110>

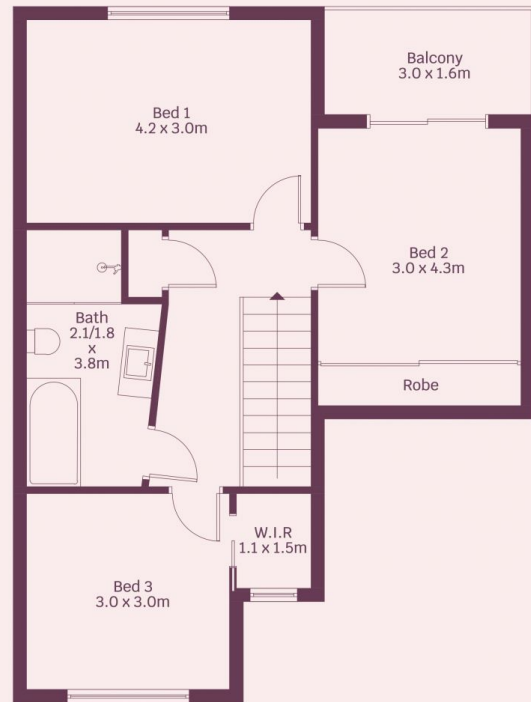
what you will love...

- > small complex in a great handy location to all local amenities and easy freeway access
- > three good-sized bedrooms, two with built-in wardrobes

[For full version visit the website](#)



Ground Floor



First Floor



HOUSE INTERNAL AREA 128m²
HOUSE OVERALL AREA 218m²

Plans shown are for presentation purposes and are not part of any legal document.

Dimensions are approximate