

## 11 Avondale Road Dapto NSW

3 1 4

views | spacious | convenient

Overlooking with elevated views of the escarpment, this three-bedroom cottage enjoys plenty of space, a practical floor plan with multiple living areas and convenience at its finest. The highlight feature of the home is the side rear yard access to a huge four car lock up garage with work bench and a mezzanine storage space.

**Type** : House  
**Price** : \$ 775,000  
**Land Size** : 683 sqm  
**View** : <https://www.mcneice.com.au/8483106>

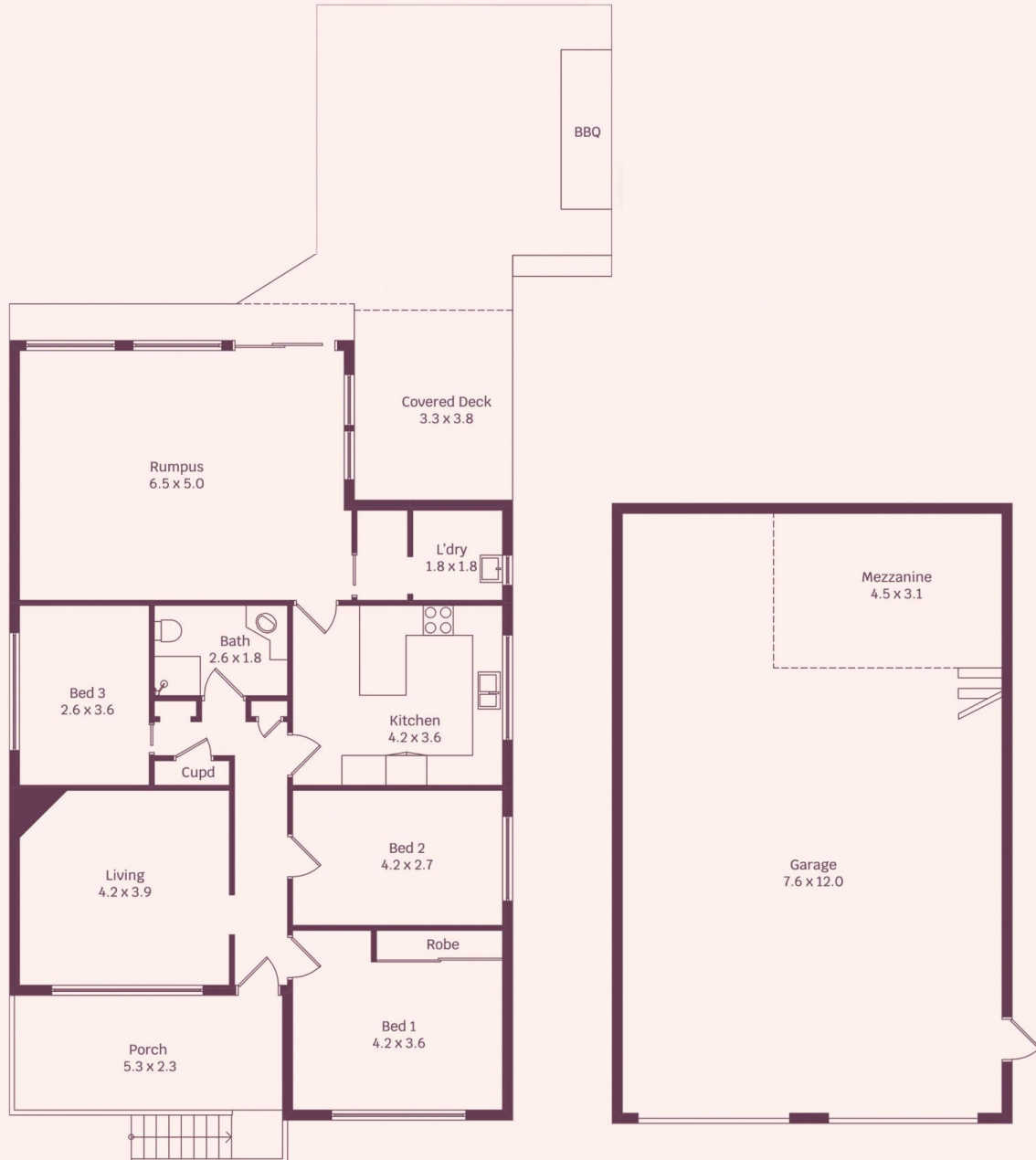
what you will love...

- > generous sized living area with a huge rumpus room at the rear
- > quality 40mm caesarstone kitchen with gas cooking,

[For full version visit the website](https://www.mcneice.com.au)

11 Avondale Road, Dapto

molenaar × mcneice



HOUSE INTERNAL AREA 123m<sup>2</sup>

HOUSE OVERALL AREA 278m<sup>2</sup>

Plans shown are for presentation purposes and are not part of any legal document.

Dimensions are approximate