



13 Acreage Street Kembla Grange NSW

3 2 1

community | modern | family

This near new split level home is perched on the high side of the street looking towards the ever impressive escarpment. A perfectly designed home maximising the orientation and landscape to highlight the incredible features of this GJ Gardner build.

Type : House
Price : \$ 843,000
Land Size : 409 sqm
View : <https://www.mcneice.com.au/8483100>

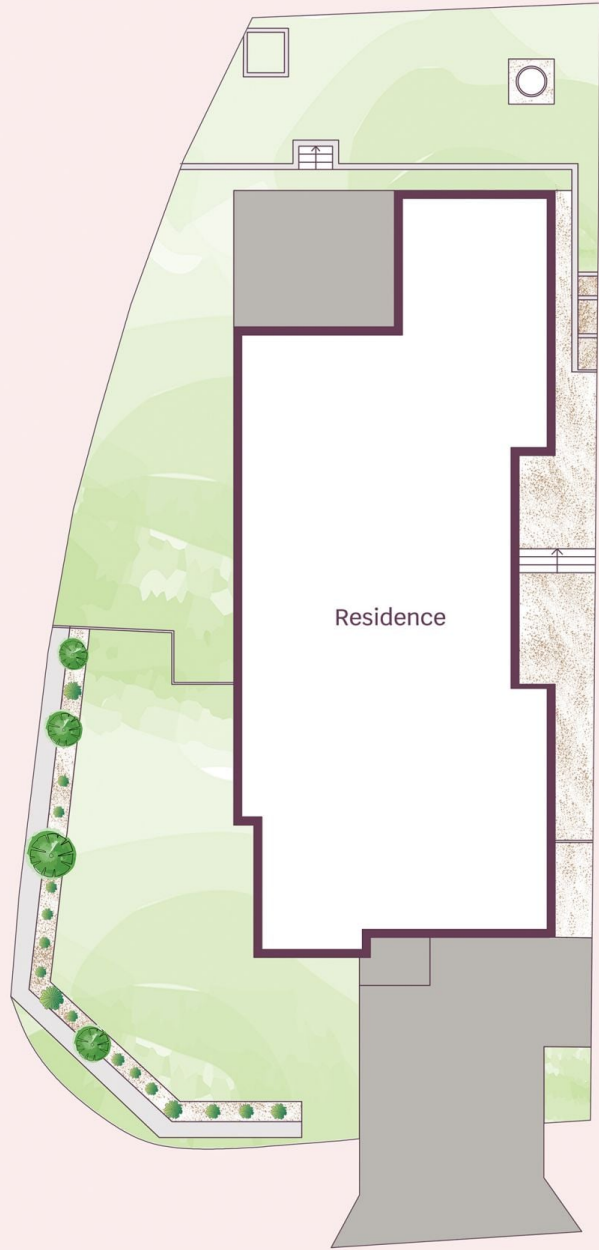
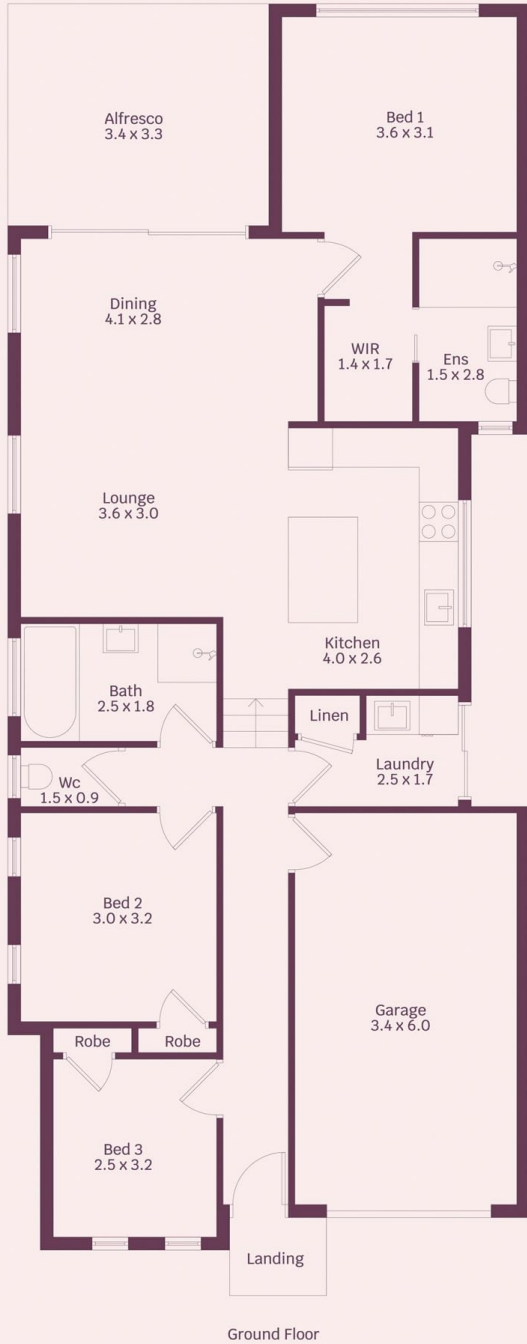
what you'll love?

- > 3 large bedrooms with built in wardrobes, main with ensuite and walk in robe
- > modern galley style kitchen with stone benchtops, dishwasher and electric appliances

[For full version visit the website](#)

13 Acerage Street. Stream Hill

molenaar × mcneice



HOUSE INTERNAL AREA 130m²
HOUSE OVERALL AREA 150m²

Plans shown are for presentation purposes and are not part of any legal document.

Dimensions are approximate