



## 47 Taylor Road Albion Park NSW

2 1 1

convenience | potential | single-level

Nestled in a convenient position, moments from the heart of Albion Park CBD, this two bedroom brick veneer cottage sits on a large 645sqm block and caters to first home buyers looking to enter the market, investors looking for possible development / value add potential with the side rear yard access and those looking to downsize to single-level living.

what you will love...

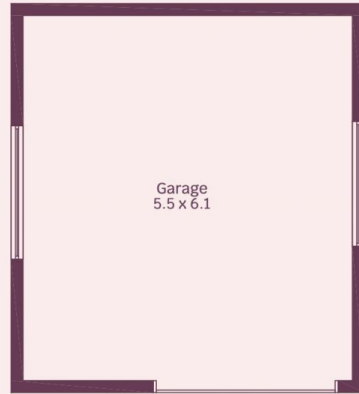
> two generous sized bedrooms, master with built-in wardrobe

[For full version visit the website](https://www.mcneice.com.au/8483097)

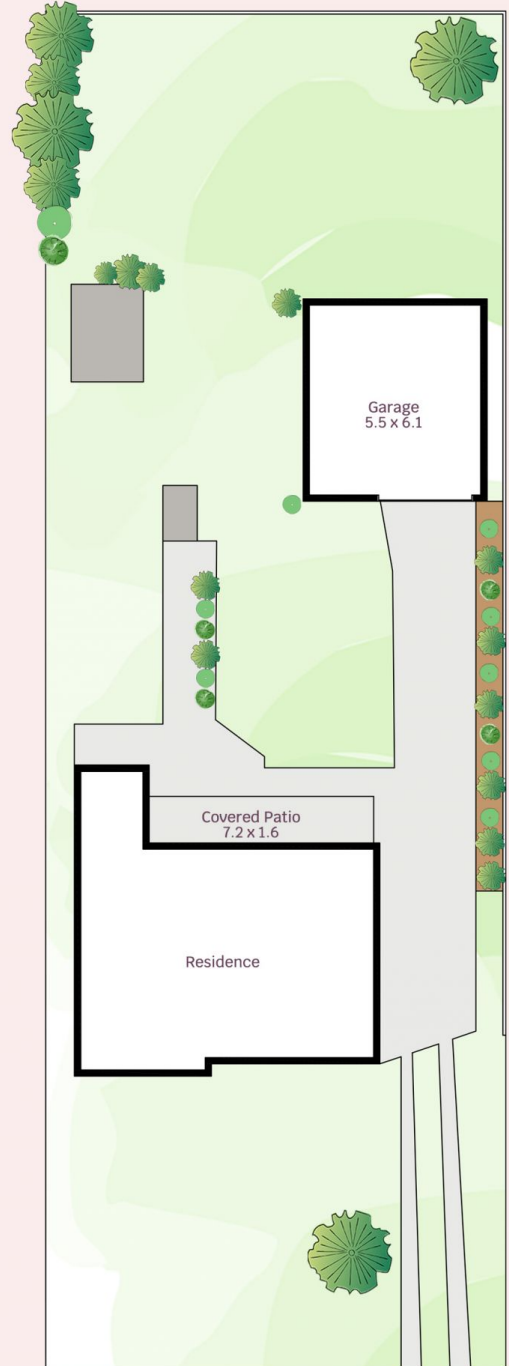
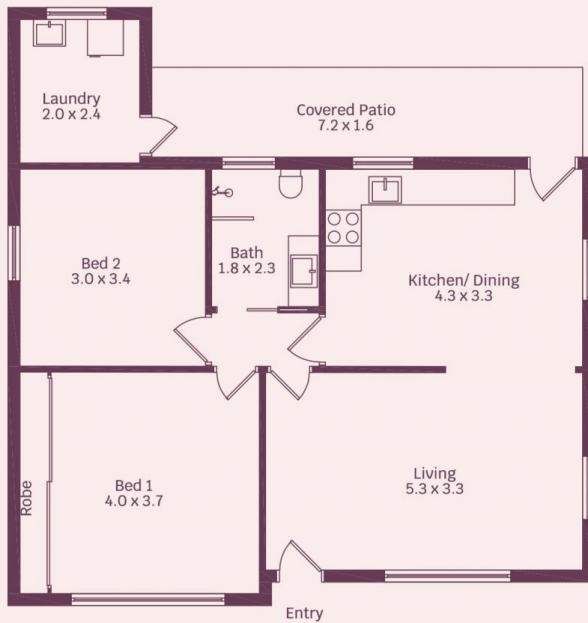
**Type** : House  
**Price** : \$ 693,000  
**Land Size** : 645 sqm  
**View** : <https://www.mcneice.com.au/8483097>

47 Taylor Road, Albion Park

molenaar × mcneice



Not In Position



HOUSE INTERNAL AREA 116m<sup>2</sup>

HOUSE OVERALL AREA 127m<sup>2</sup>

Plans shown are for presentation purposes and are not part of any legal document.

Dimensions are approximate