

338 Princes Highway Dapto NSW

2 1 3

affordable | first home | yard

A perfect blend of convenience and affordable living, stands this neat two-bedroom, clad, character-filled home with high ceilings, decorative cornices and a great 695 sqm block. The home enjoys close proximity to Dapto mall and CBD, local schools, public transport and provides easy access to major motorways. This home is perfect for those looking to enter the market for the first time, those looking for investment potential or wanting to operate a home business with prime exposure (subject to council approval).

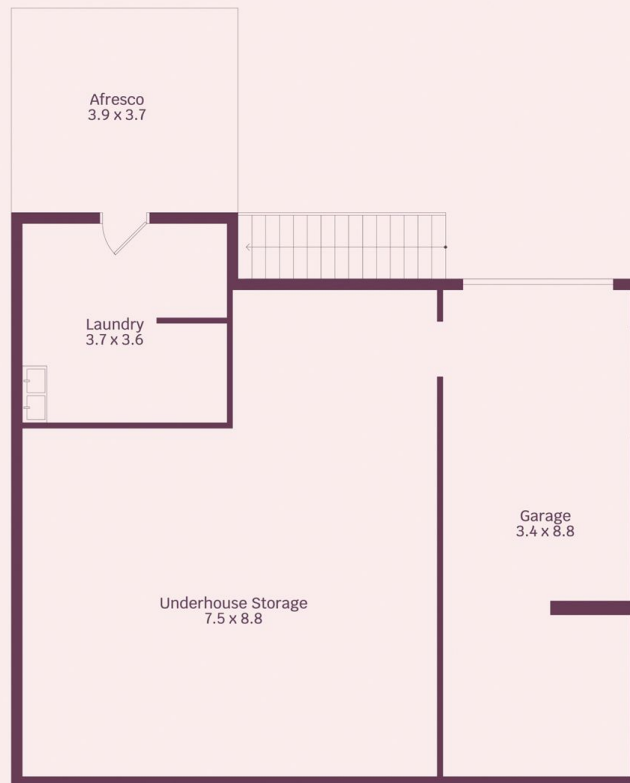
what you will love...

Type : House
Land Size : 695 sqm
View : <https://www.mcneice.com.au/8483086>

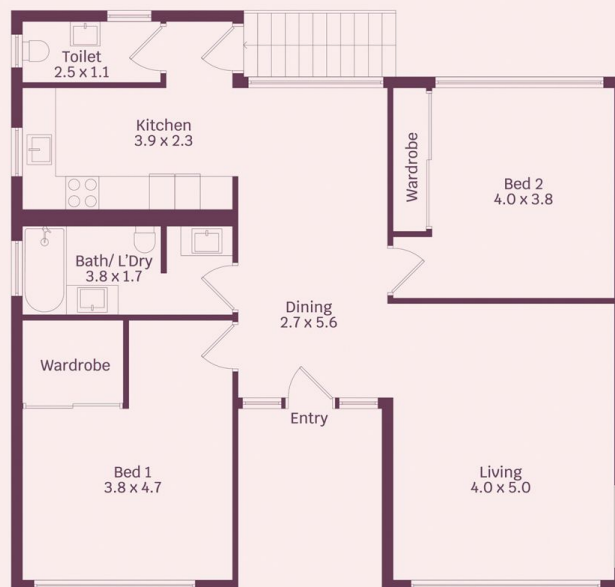
[For full version visit the website](https://www.mcneice.com.au)

338 Princes Highway, Dapto

molenaar × mcneice



Lower Floor



Ground Floor

HOUSE INTERNAL AREA 209m²
HOUSE OVERALL AREA 229m²

Plans shown are for presentation purposes and
are not part of any legal document.

Dimensions are approximate