

## 21 Brooks Reach Road Horsley NSW

3 2 1

lookout | location | family

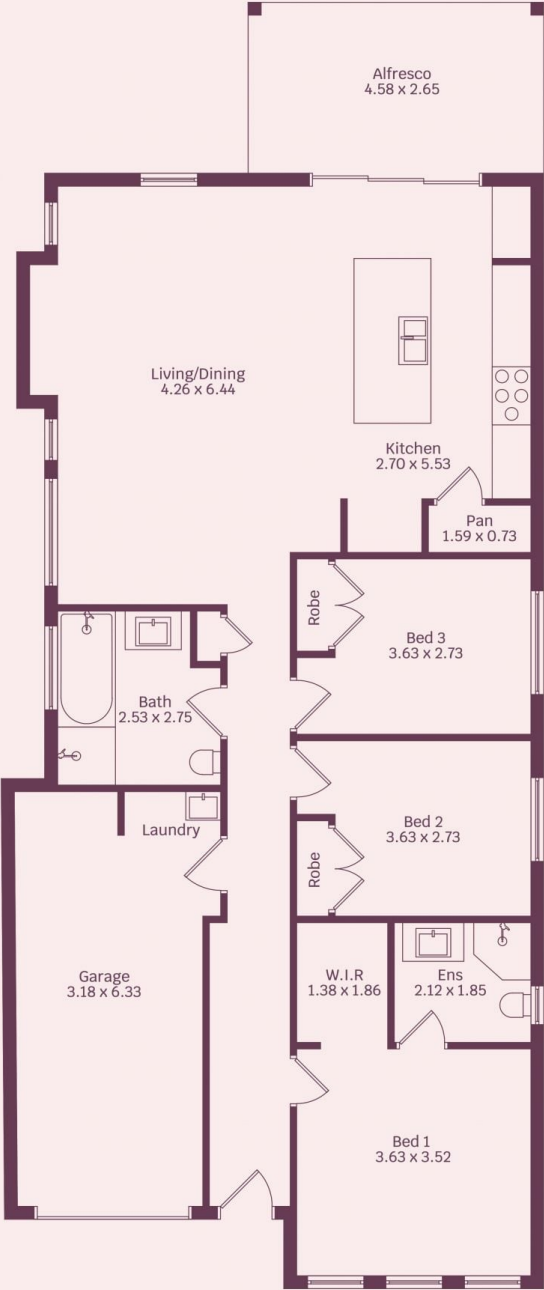
Nestled amongst quality homes within the Brooks Reach Estate, sits this great, single level, family home. welcomed by stunning escarpment views and an easy maintenance lifestyle. This three-bedroom home offers the perfect blended opportunity for buyers to enter the market, or anyone looking to downsize.

what you will love?

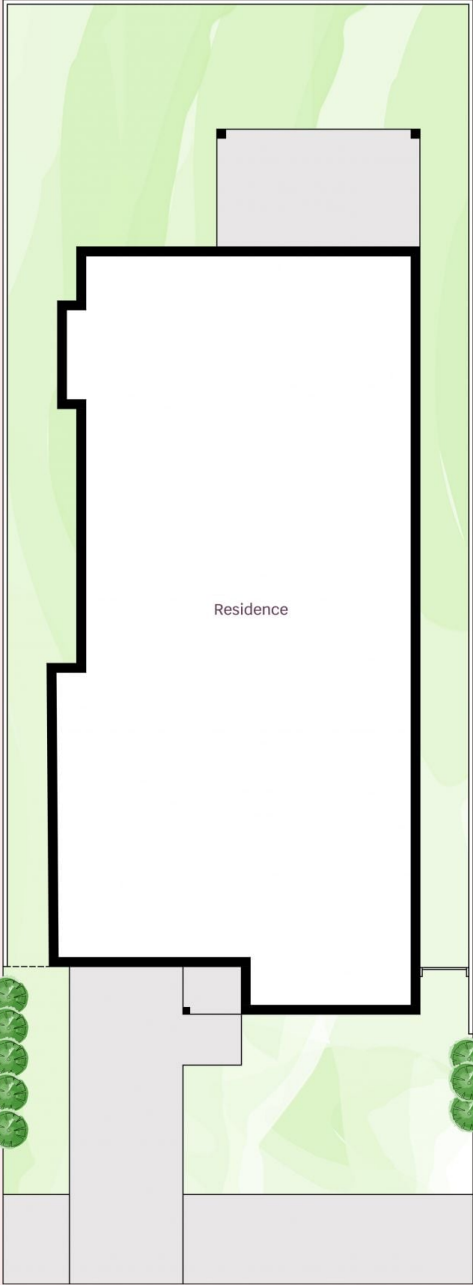
- > three generously sized bedrooms all with built in wardrobes, main with walk in and ensuite
- > open plan living and dining accompanied with floating

[For full version visit the website](https://www.mcneice.com.au)

**Type** : House  
**Price** : \$ 811,000  
**Land Size** : 308 sqm  
**View** : <https://www.mcneice.com.au/8483085>



Front Ground Floor



Brooks Reach Road  
Site plan  
(not to scale)



HOUSE INTERNAL AREA 125m<sup>2</sup>  
HOUSE OVERALL AREA 147m<sup>2</sup>  
Plans shown are for presentation purposes and  
are not part of any legal document.  
Dimensions are approximate