



### 3 Grevillea Street Albion Park Rail NSW

3  1  1 

space | peaceful | convivence

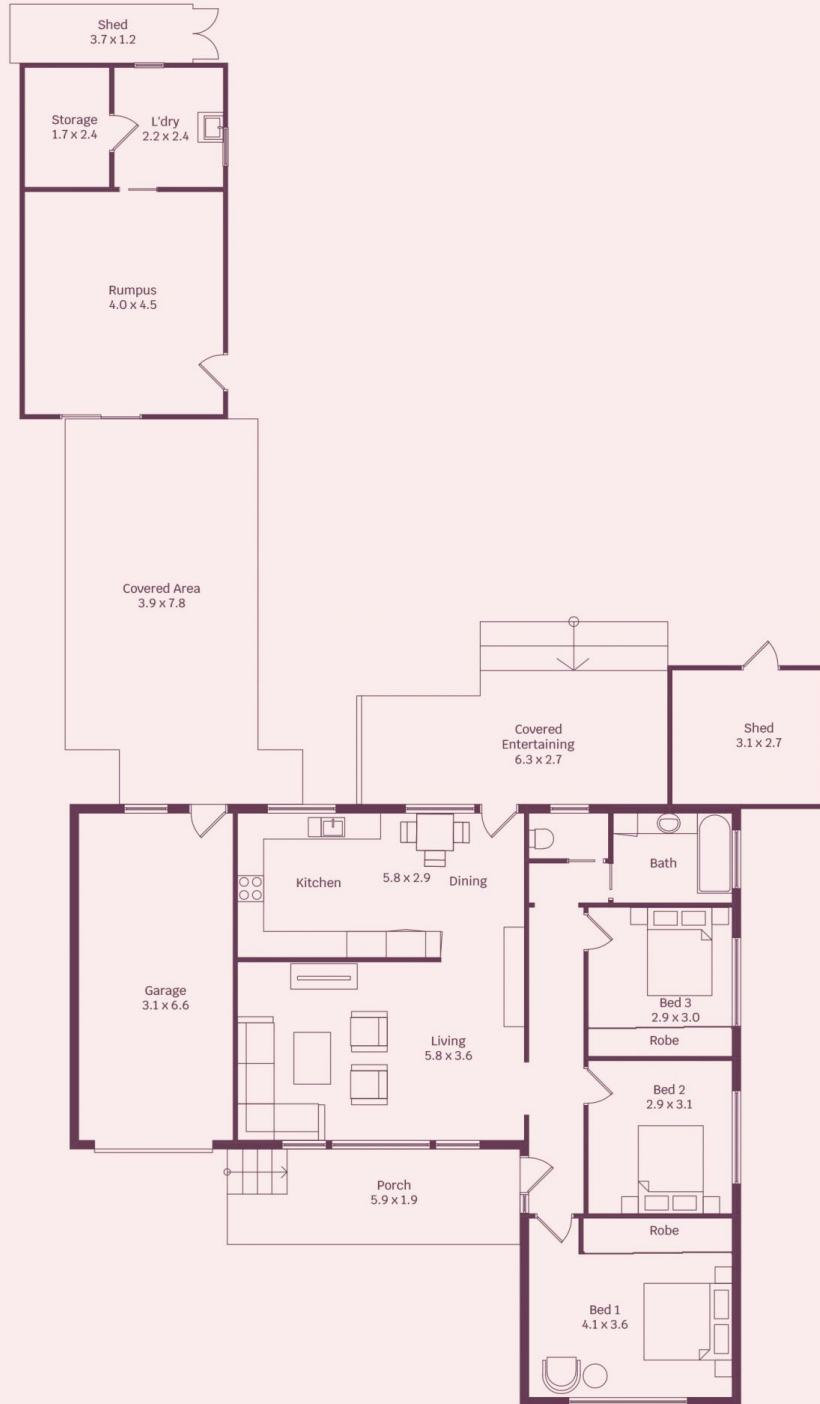
This immaculately presented, single level home offers a simple, yet low maintenance way of living. Showcasing a spacious floor plan, this property boasts 3 bedrooms flowing into a large separate lounge room offering plenty of natural light and into the combined dining and kitchen area, featuring all modern appliances. Outside you will find a great level backyard complete with a covered pergola and merbau deck and to the side a tranquil spa area to relax. This home showcases plenty of room to entertain all your family and friends.

what you will love?

[For full version visit the website](https://www.mcneice.com.au/8483078)

**Type** : House  
**Price** : \$ 780,000  
**Land Size** : 556 sqm  
**View** : <https://www.mcneice.com.au/8483078>

3 Grevillea Steet, Albion Park Rail



HOUSE INTERNAL AREA 87m<sup>2</sup>

Plans shown are for presentation purposes and are not part of any legal document.

Dimensions are approximate