



16 Armitage Avenue Horsley NSW

4 2 2

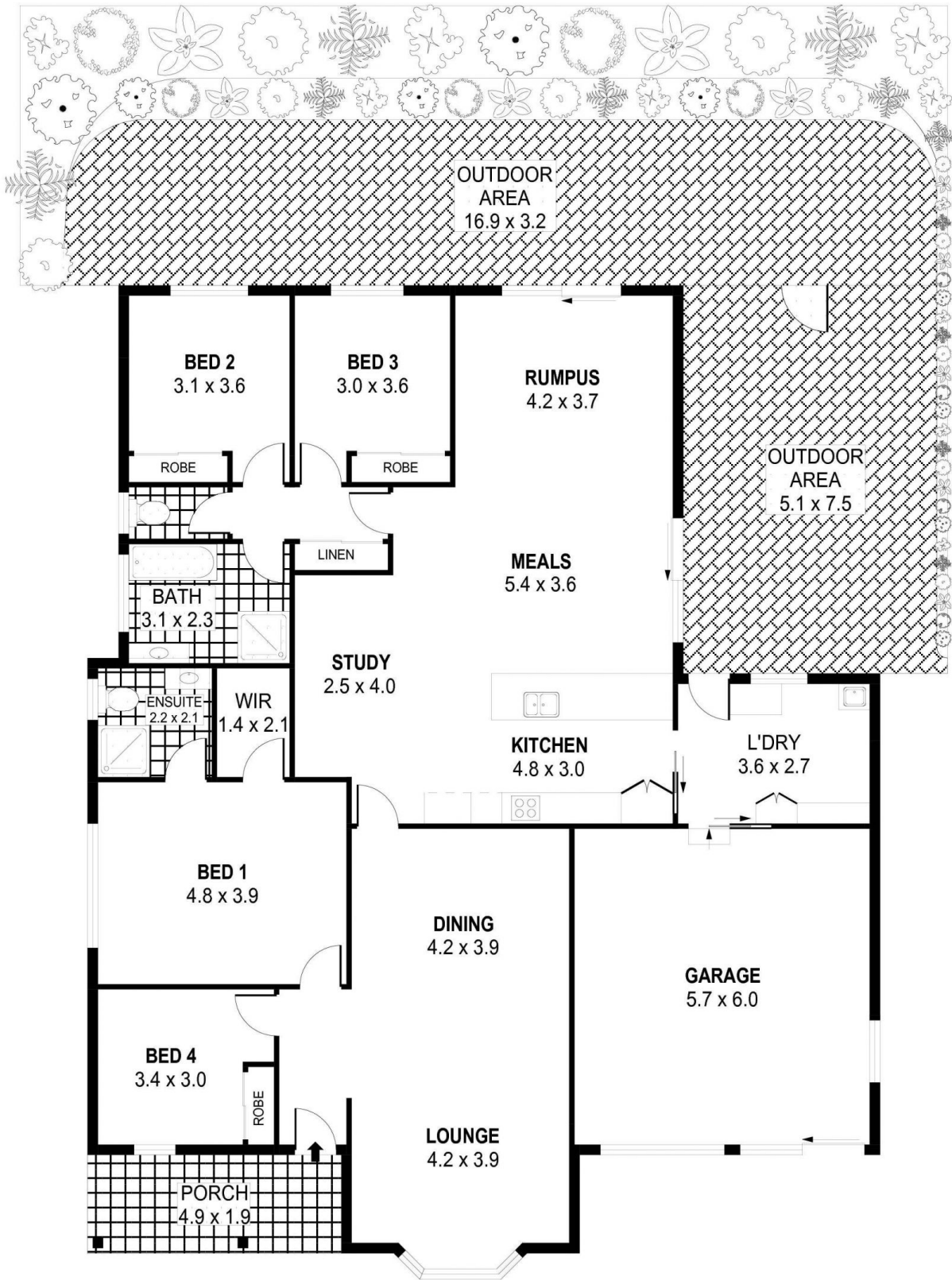
Nestled in a peaceful tree-lined street, is this immaculately built & designed, single level, 4 bedroom family home, which provides quality throughout, space and a fantastic easy maintenance lifestyle.

The practical floor plan caters to larger families with multiple living area options, plenty of storage, privacy and is perfect for the growing family or those looking for little maintenance. Located within close proximity to Dapto Public School, Dapto Mall & CBD, cafes, restaurants & has easy access to the motorways north & southbound.

Offering great sized bedrooms with built in wardrobes in 3 of them main with walk in robe & ensuite, ducted air

Type : House
Price : \$ 920,000
Building Size : 24 sqm
Land Size : 540 sqm
View : <https://www.mcneice.com.au/8483052>

[For full version visit the website](https://www.mcneice.com.au)

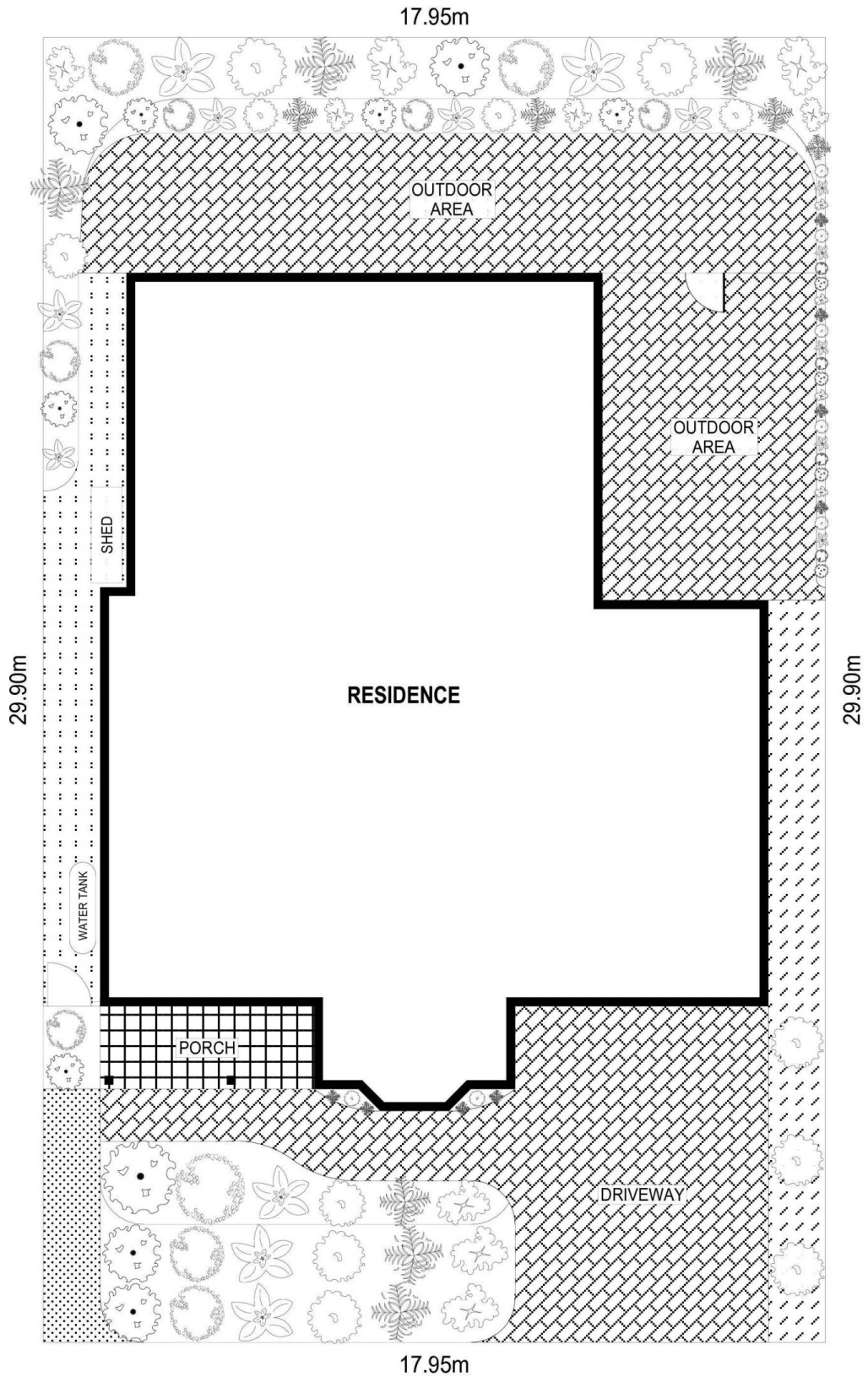


PLANS SHOWN ONLY INDICATIVE OF LAYOUT. DIMENSIONS ARE APPROXIMATE.
 Ref. No: 102767

INT : 185m²
 EXT : 100m²
 GARAGE : 35m²

16 ARMITAGE AVENUE

HORSLEY



SITE PLAN

PLANS SHOWN ONLY INDICATIVE OF LAYOUT. DIMENSIONS ARE APPROXIMATE.
 Ref. No: 102767

16 ARMITAGE AVENUE

HORSLEY