



20 Werowi Street Dapto NSW

3  1 

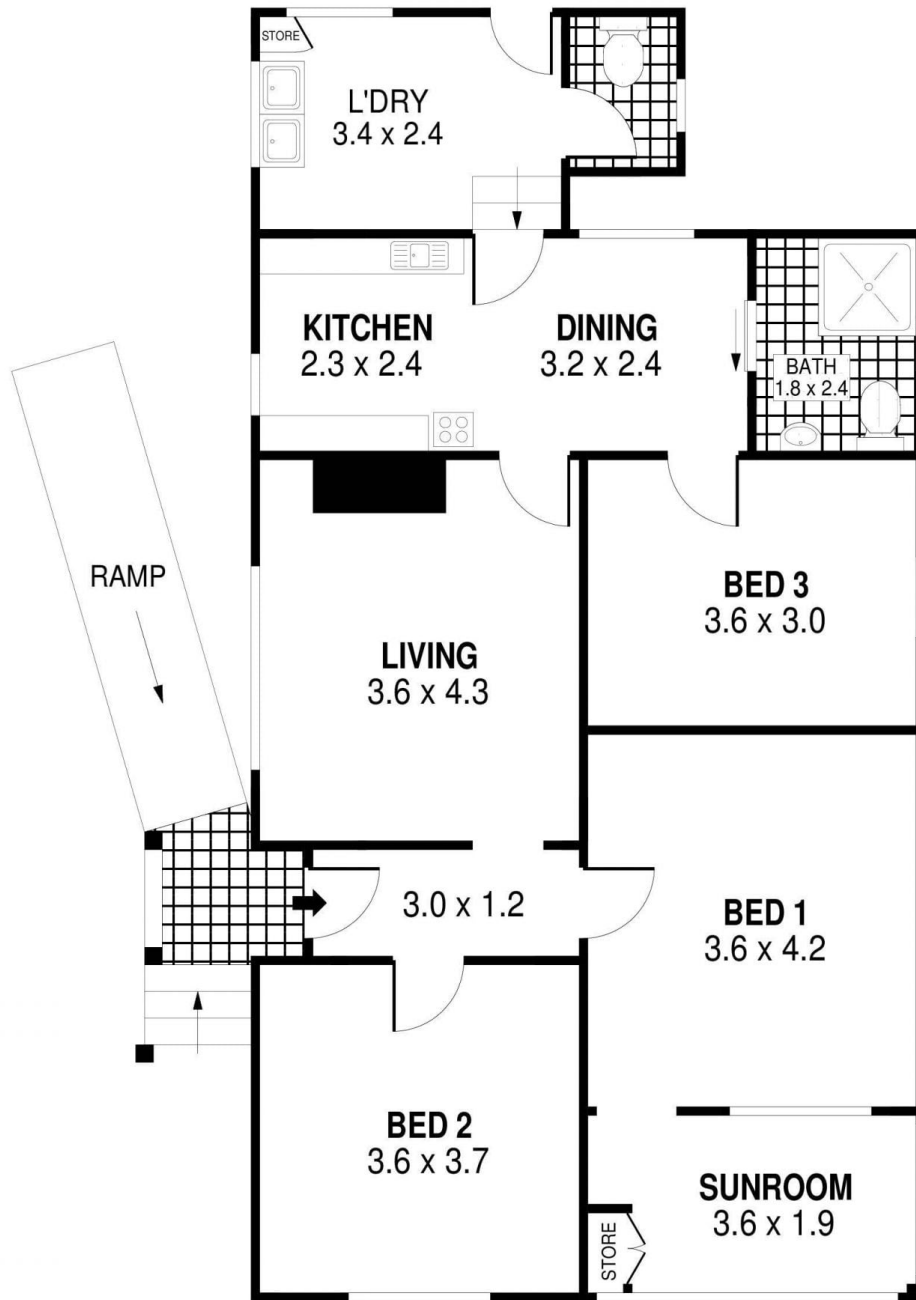
A single level B4 zoned corner block, located within the Dapto CBD. 765m² of prime real estate with loads of residential & commercial development options. With the LEP allowing for vast options this one will suit any type of property investor!

Type : House
Land Size : 765 sqm
View : <https://www.mcneice.com.au/8483049>

The Main Features:

- 3 spacious bedrooms, main with original enclosed sunroom
- Recently painted throughout and new flooring layed
- Corner block with rear lane access
- Loads of scope to utilise the FSR of 2.0 : 1
- 11m height limit perfect for the future

[For full version visit the website](#)



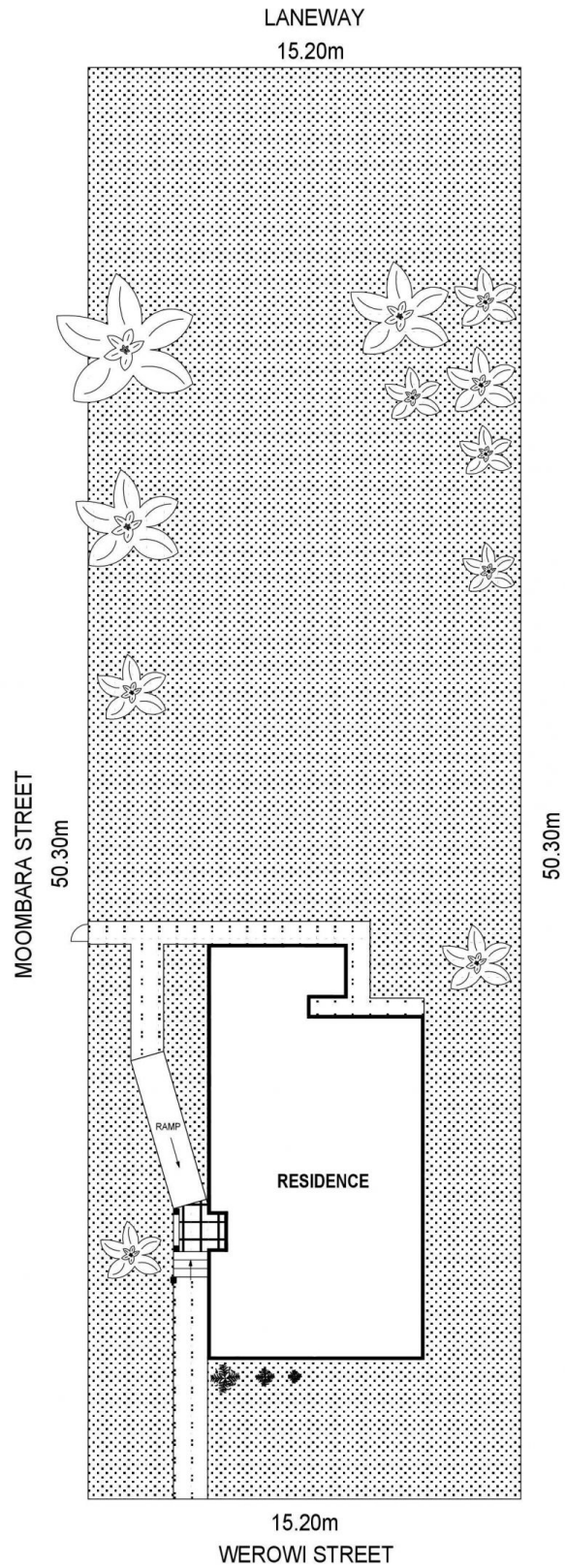
SCALE (METRES)

PLANS SHOWN ONLY INDICATIVE OF LAYOUT. DIMENSIONS ARE APPROXIMATE.
Ref. No: 101851

INT : 98m²

20 WEROWI STREET

DAPTO



SCALE (METRES)

PLANS SHOWN ONLY INDICATIVE OF LAYOUT. DIMENSIONS ARE APPROXIMATE.
Ref. No: 101851

20 WEROWI STREET

DAPTO