






34 Karara Avenue Horsley NSW

3  2  2 

A beautiful single level dream awaits you here at 34 Karara Avenue Horsley. From the peaceful street to the large internal space, this one has everything a small or large family needs. With dual living areas, large garage and low maintenance appeal, it certainly ticks all the boxes.

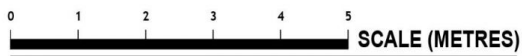
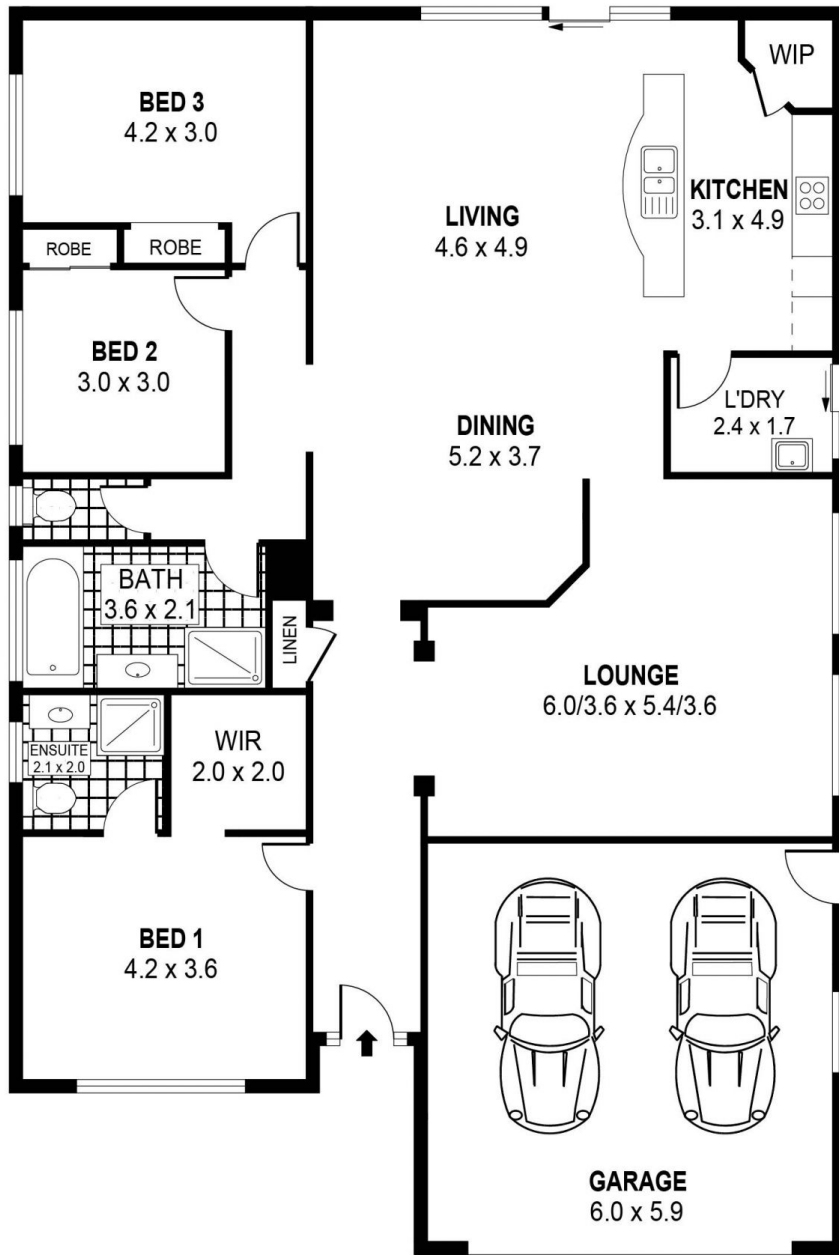
Type : House

View : <https://www.mcneice.com.au/8483043>

The Main Features:

- 3 spacious bedrooms all with built in robes and main with ensuite and walk in wardrobe
- 2 separate living areas and additional dining room, ideal for the larger family
- Large galley style kitchen with pantry and loads of cupboard space and breakfast bench

[For full version visit the website](https://www.mcneice.com.au)

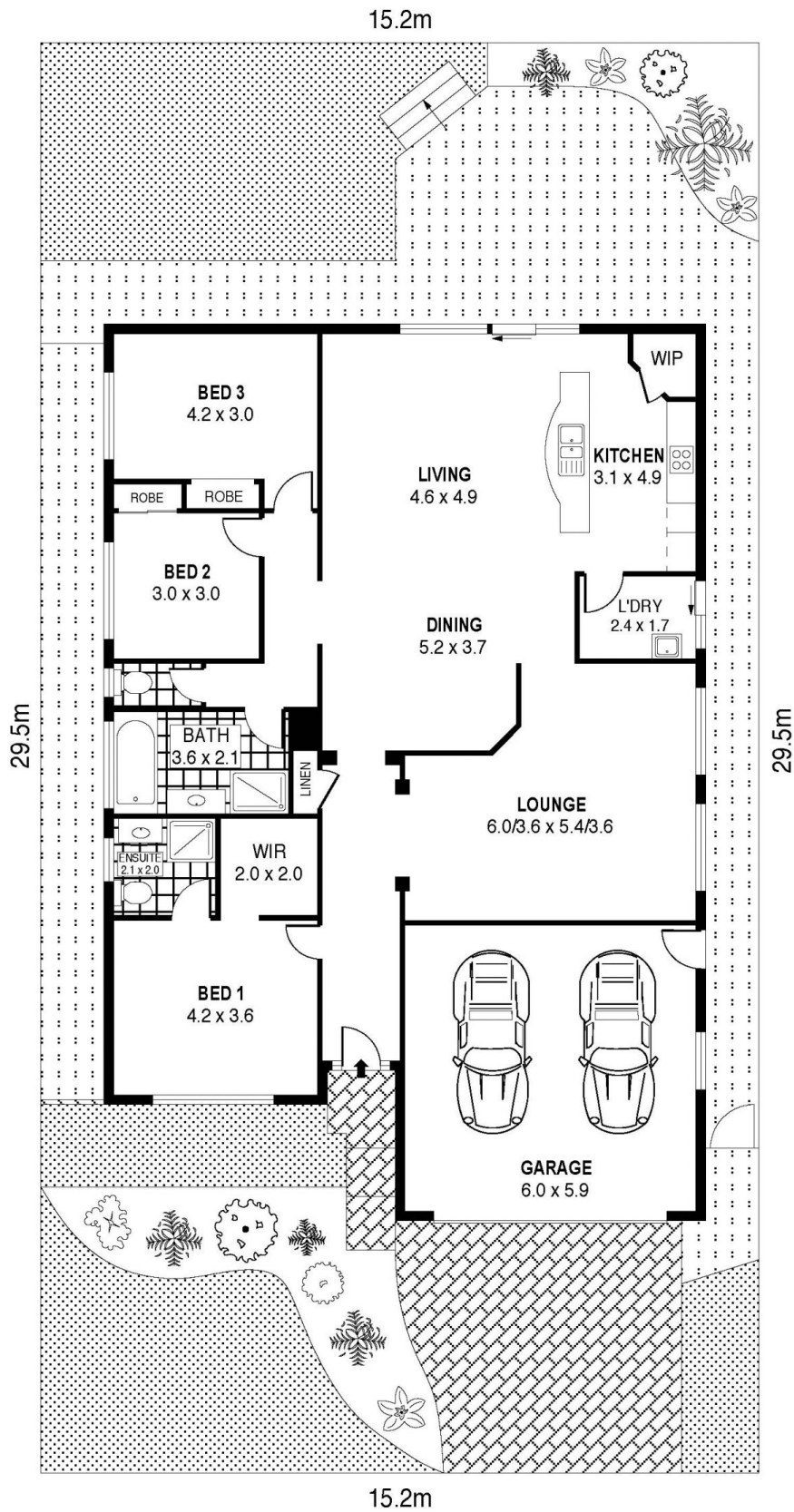


PLANS SHOWN ONLY INDICATIVE OF LAYOUT. DIMENSIONS ARE APPROXIMATE.
Ref. No: 92974

INT : 165m²
GARAGE : 35m²

34 KARARA AVENUE

HORSLEY



SCALE (METRES)

PLANS SHOWN ONLY INDICATIVE OF LAYOUT. DIMENSIONS ARE APPROXIMATE.
Ref. No: 92974

34 KARARA AVENUE

HORSLEY