



15 Karara Avenue Horsley NSW

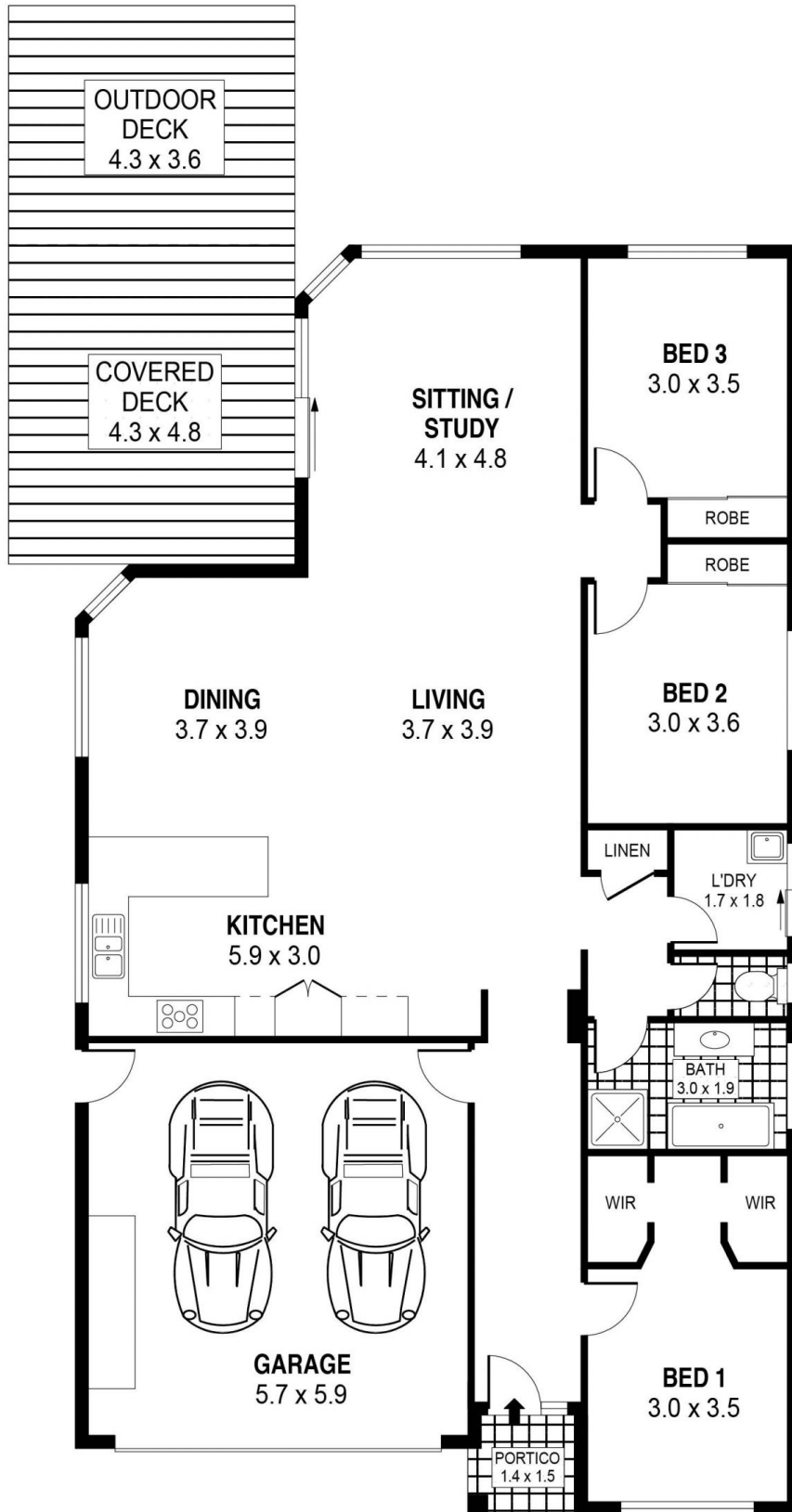
3  1  2 

Quietly enjoying a peaceful lifestyle in a convenient location, is this stylishly renovated, 3 bedroom + study, single level, energy efficient family home, which is sure to impress families & those looking to downsize. There's literally nothing you'll need to do, but move in!

Type : House
Land Size : 360 sqm
View : <https://www.mcneice.com.au/8483041>

Featuring a spacious open plan design with a large living area & separate study space, renovated kitchen, bathroom & laundry, built in wardrobes in beds 2 & 3 and the main enjoys a walk in robe, security roller shutters, energy efficient solar panels to reduce electricity bills, covered outdoor alfresco deck entertaining area to share with guests, nicely manicured & landscaped gardens, easy maintenance 360m2 block and a double lock up garage

[For full version visit the website](#)

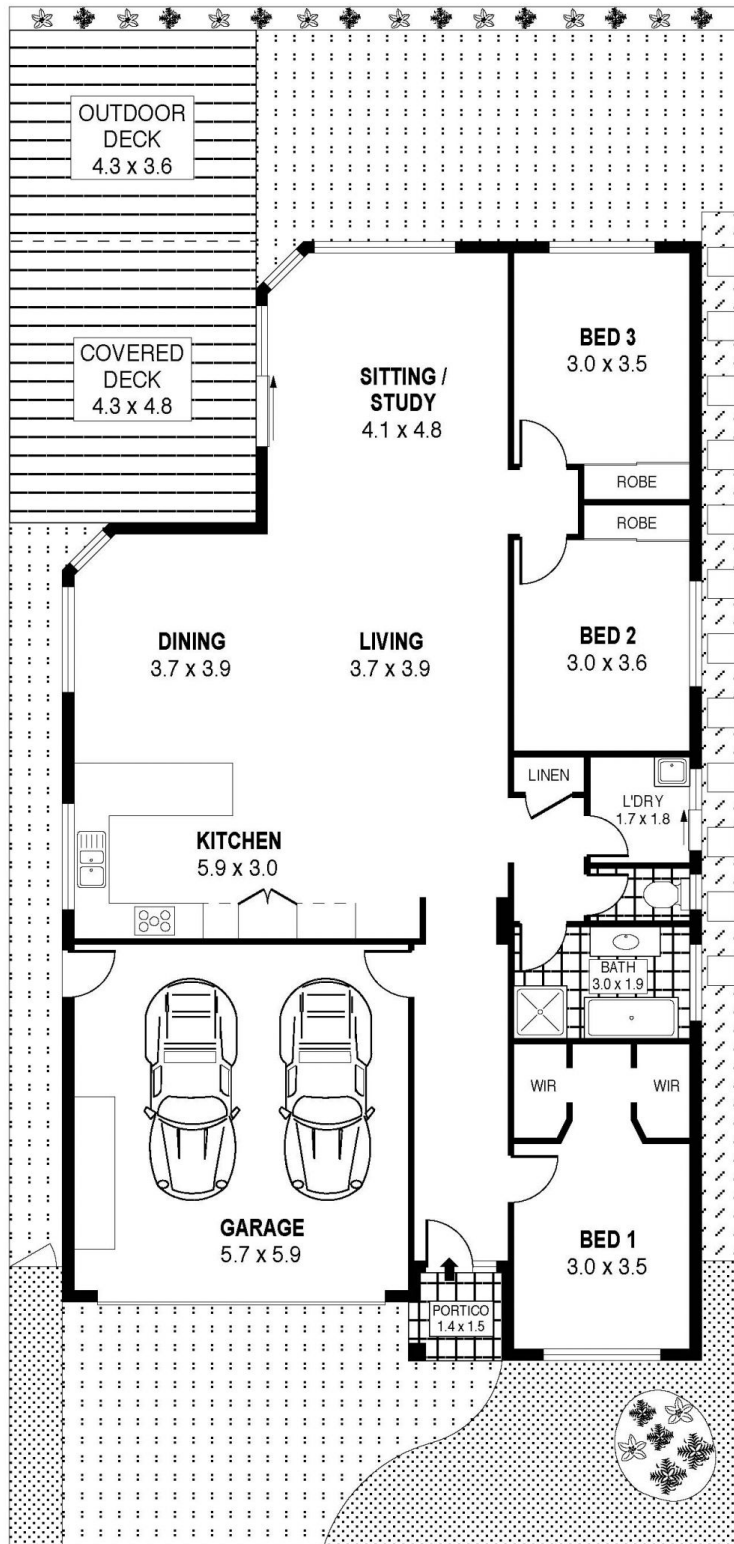


PLANS SHOWN ONLY INDICATIVE OF LAYOUT. DIMENSIONS ARE APPROXIMATE.
Ref. No: 92580

INT : 137m²
EXT : 38m²
GARAGE : 34m²

15 KARARA AVENUE

HORSLEY



SCALE (METRES)

PLANS SHOWN ONLY INDICATIVE OF LAYOUT. DIMENSIONS ARE APPROXIMATE.
Ref. No. 92580

INT : 137m²
EXT : 38m²
GARAGE : 34m²

15 KARARA AVENUE

HORSLEY