



5 Hubbard Avenue Horsley NSW

4 2 2

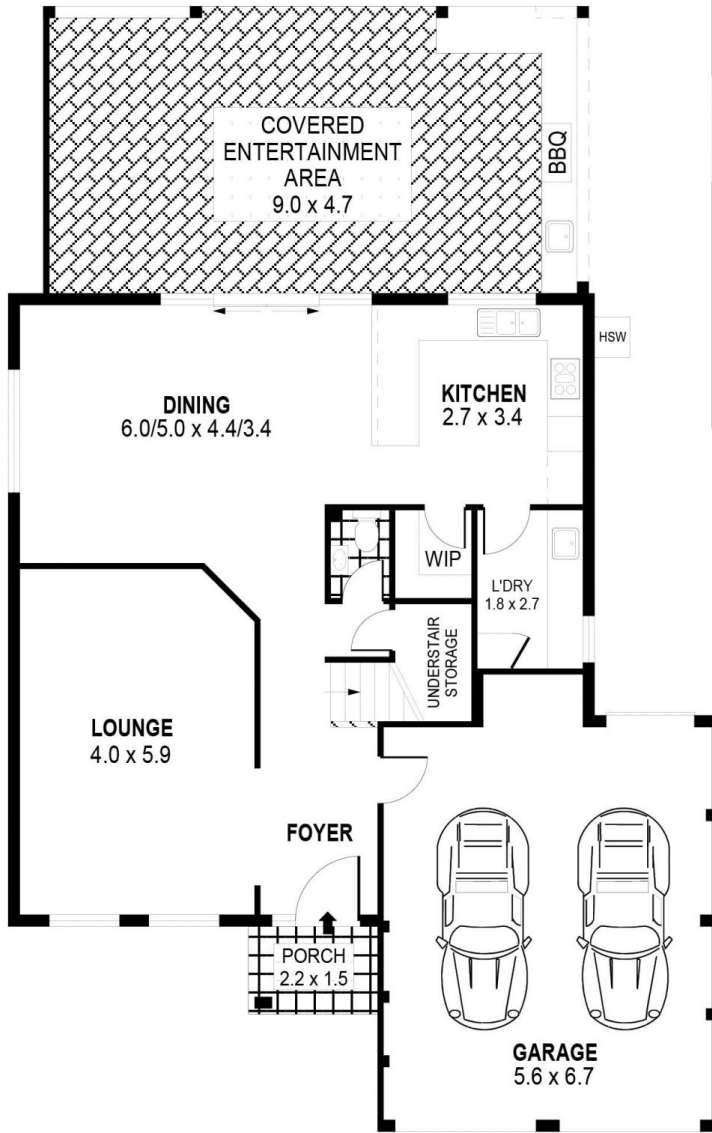
Defined by its inviting sense of elegance, style, sophistication and exquisite entertaining, is this truly exceptional, Marksman built, 4 bedroom family home which is positioned in arguably one of the best pockets of real estate in Horsley.

Type : House
Land Size : 539 sqm
View : <https://www.mcneice.com.au/8483038>

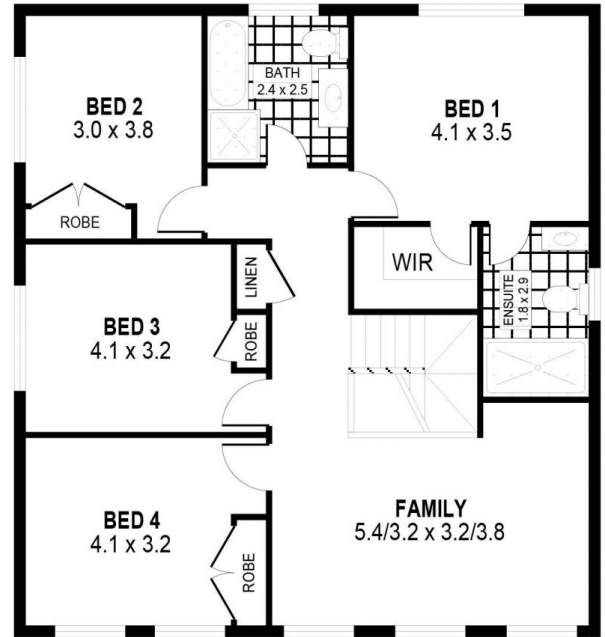
From the moment you enter the front door, 5 Hubbard Avenue will make you feel something special. You'll be able to experience the beautiful entry, warm homely vibes, elegant natural tones & the essence of a quality family lifestyle...

Showcasing a spacious design with multiple living areas, quality finishes throughout, a luxury outdoor alfresco

[For full version visit the website](#)



GROUND FLOOR



FIRST FLOOR

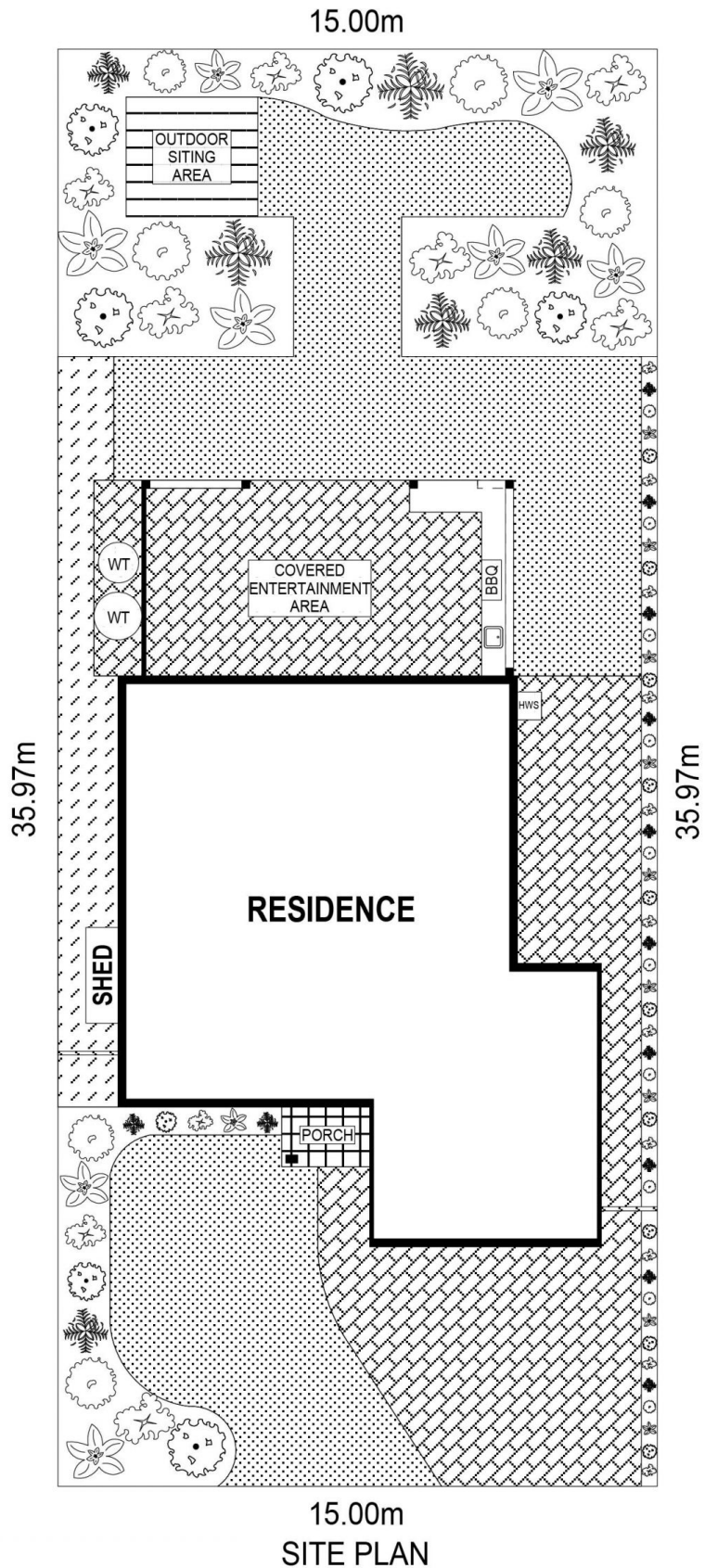


PLANS SHOWN ONLY INDICATIVE OF LAYOUT. DIMENSIONS ARE APPROXIMATE.
Ref. No: 92169

INT : 186m²
EXT : 46m²
GARAGE : 39m²

5 HUBBARD AVENUE

HORSLEY



SCALE (METRES)

PLANS SHOWN ONLY INDICATIVE OF LAYOUT. DIMENSIONS ARE APPROXIMATE.
Ref. No: 92169

5 HUBBARD AVENUE

HORSLEY