

2 Willawa Place Koonawarra NSW

3  2  2 

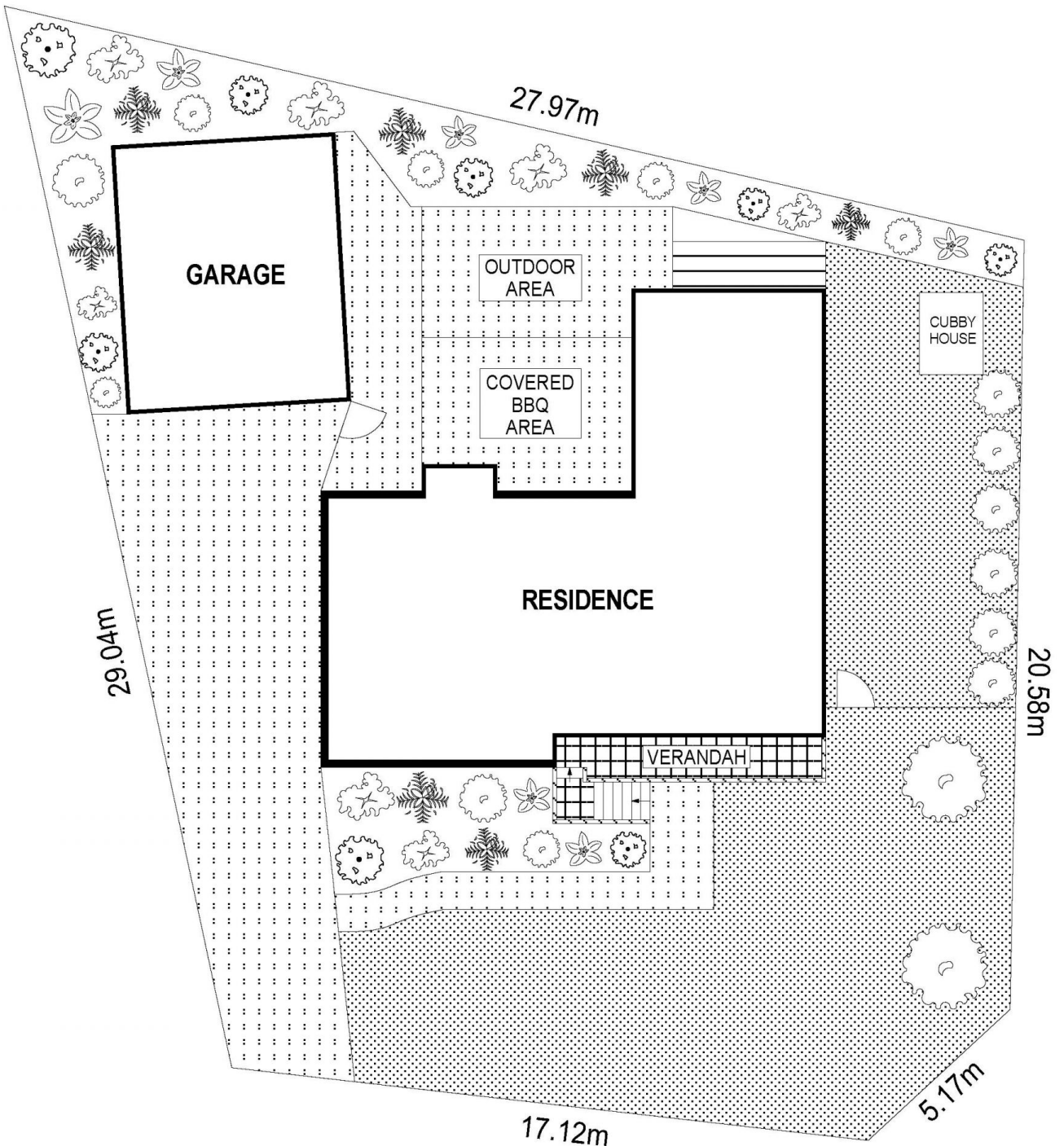
Perched on the high side of the street sits 2 Willawa Place. Spanning over an impressive 613.4sqm, the property holds loads of space inside and out. Accompany that with the ideal location offering a great breeze off the lake, plenty of natural light and only a few minutes' walk to the lakeside walking tracks.

Type : House
Land Size : 613.4 sqm
View : <https://www.mcneice.com.au/8483033>

The Main Features:

- 3 spacious bedrooms all with built in robes and ceiling fans
- 2 large internal living areas, ideal for the growing family
- Big outdoor entertaining area with separated yard space making it ideal for entertaining guests
- Large bathroom with dual shower heads, recessed

[For full version visit the website](https://www.mcneice.com.au)



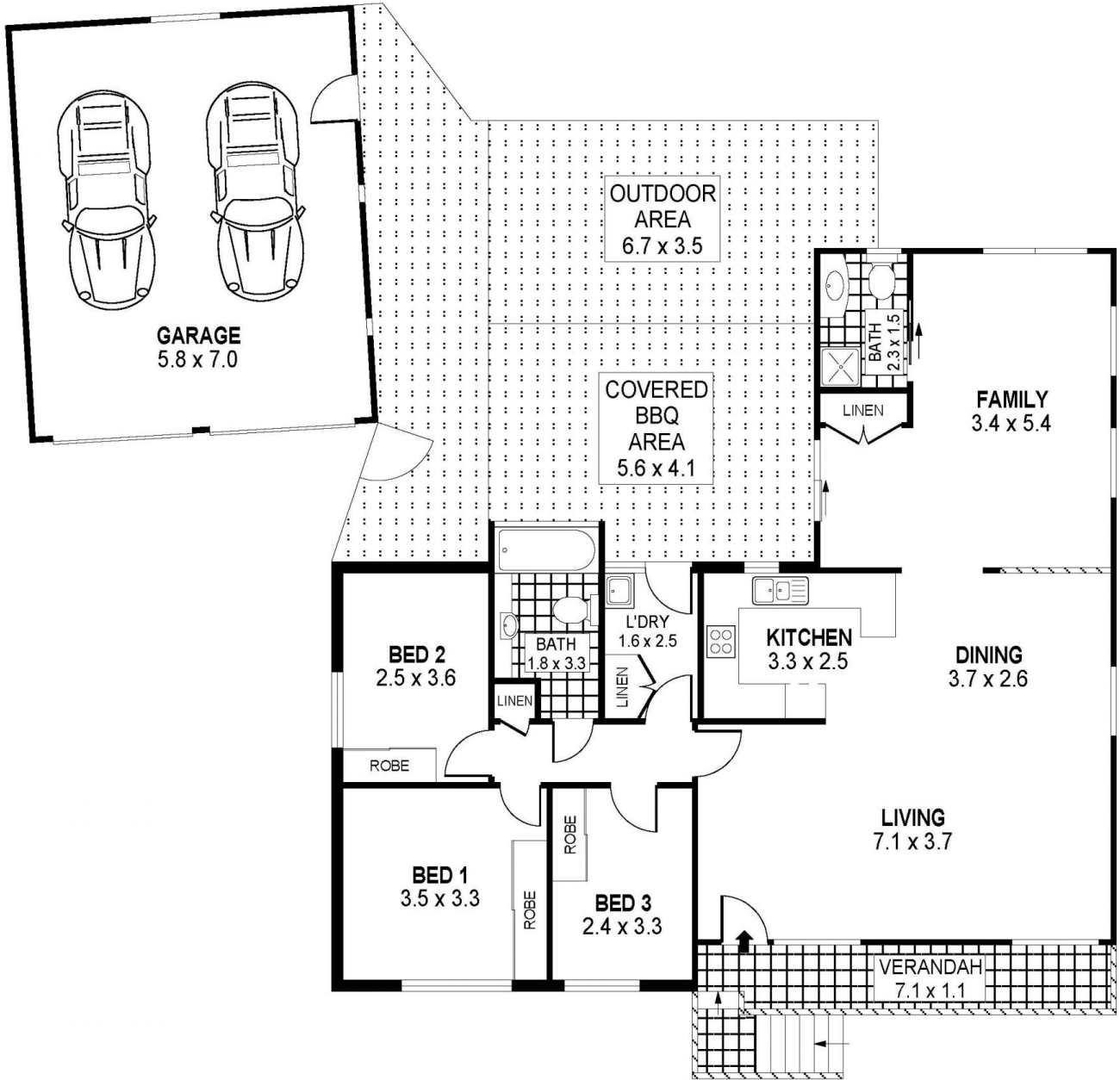
SITE PLAN



SCALE (METRES)

PLANS SHOWN ONLY INDICATIVE OF LAYOUT. DIMENSIONS ARE APPROXIMATE.
Ref. No: 92313





0 1 2 3 4 5 **SCALE (METRES)**

PLANS SHOWN ONLY INDICATIVE OF LAYOUT. DIMENSIONS ARE APPROXIMATE.
Ref. No: 92313

INT : 116m²
EXT : 51m²
GARAGE : 41m²

2 WILLAWA PLACE

KOONAWARRA