



28 Ritchie Crescent Horsley NSW

3 1 2

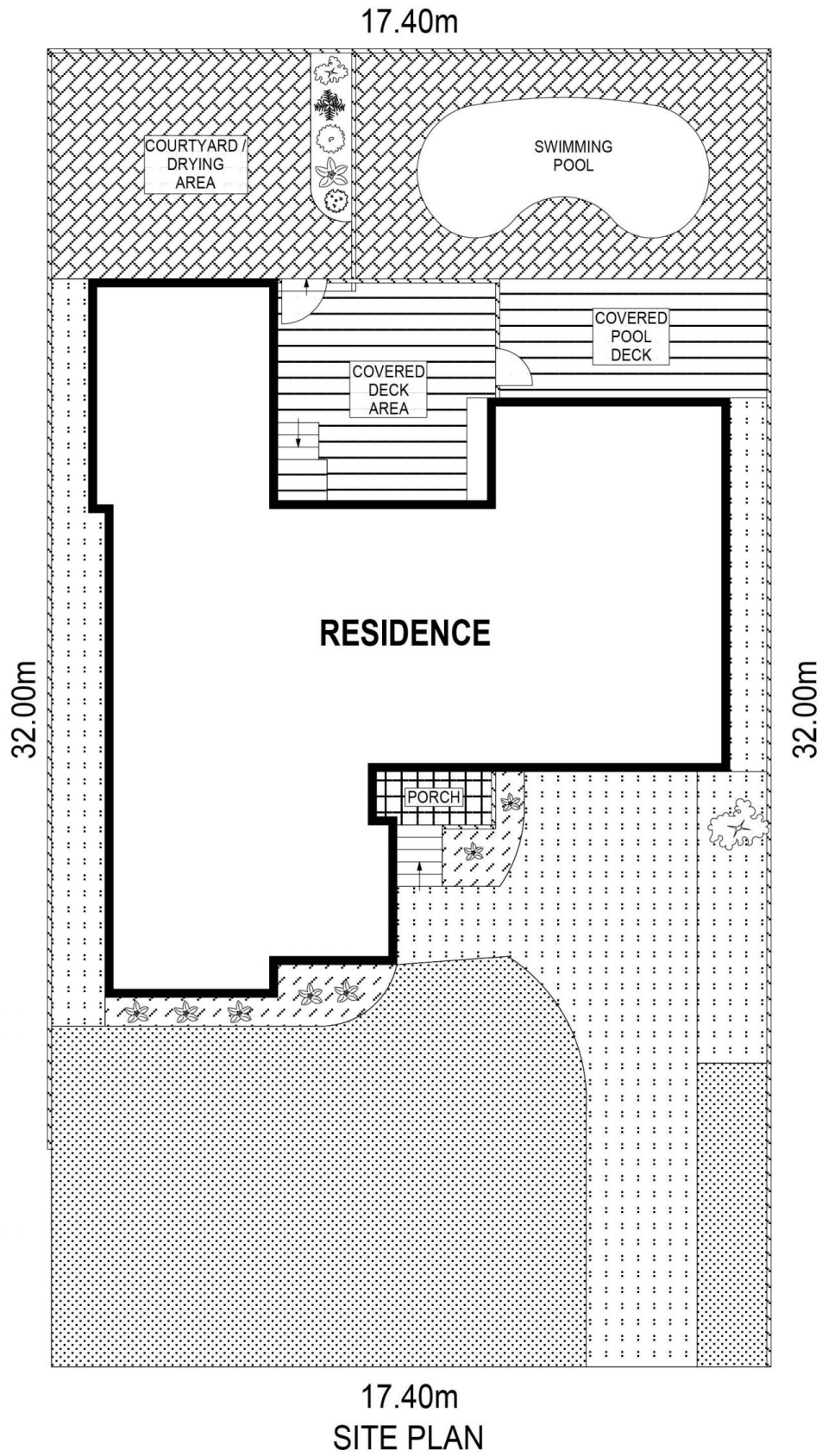
A beautiful single level home that offers so much more than just bricks and mortar. The low maintenance appeal matched with the entertaining options makes 28 Ritchie Crescent the dream first home.

Type : House
Price : \$ 795,000
Land Size : 557.4 sqm
View : <https://www.mcneice.com.au/8483028>

The Main Features:

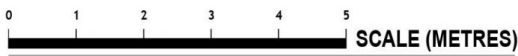
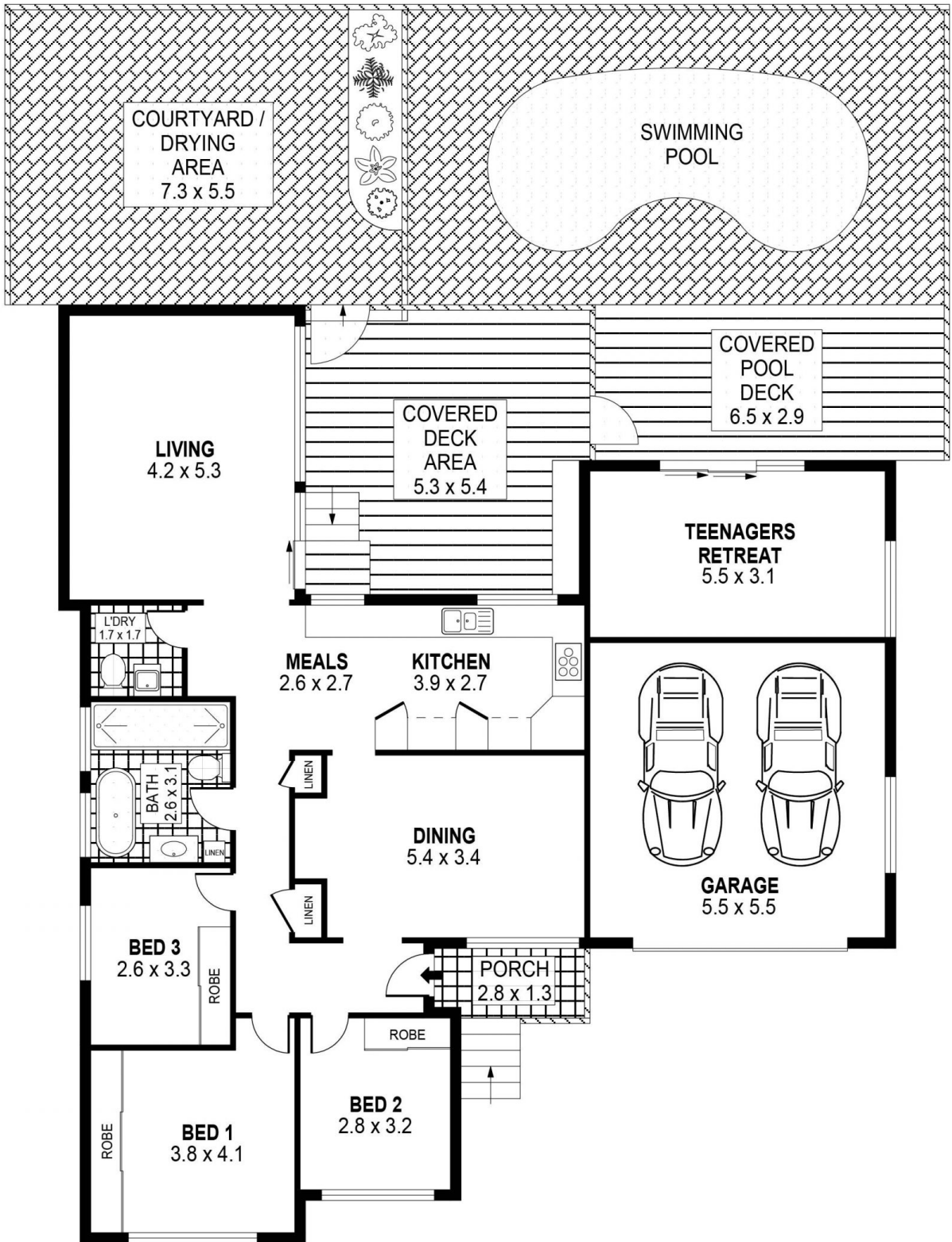
- 3 spacious bedrooms all with built in robes and fresh carpet
- Dual internal living areas, perfect for the growing family
- Beautiful kitchen with 5 burner gas cook top, electric oven, breakfast bench & overlooking the yard
- Large renovated bathroom with dual showerheads, free standing bath and second toilet in the laundry

[For full version visit the website](https://www.mcneice.com.au)



SCALE (METRES)

PLANS SHOWN ONLY INDICATIVE OF LAYOUT. DIMENSIONS ARE APPROXIMATE.
Ref. No: 90620



PLANS SHOWN ONLY INDICATIVE OF LAYOUT. DIMENSIONS ARE APPROXIMATE.
Ref. No: 90620

INT	: 113m ²
EXT	: 146m ²
GARAGE	: 30m ²
TEENAGERS RETREAT	: 17m ²

28 RITCHIE CRESCENT

HORSLEY